



# UNITED REPUBLIC OF TANZANIA



Day 1

National Multisectoral and Sector-Specific Policies for ECD

**Presenter:** Subisya Kabuje, Assistant Director of Social Welfare, President's Office, Regional Administration and Local Government

**Nurturing the Future**  
**Technical Meeting to Enhance Nurturing Care for Early Childhood Development in the Health Sector**

25-28 February  
Nairobi, Kenya



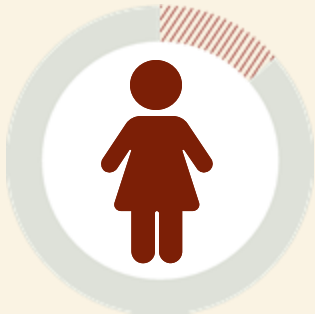
# EARLY CHILDHOOD DEVELOPMENT SITUATION IN TANZANIA

## 27%

of the population are children aged **0–8 years** (16,694,763)<sup>1</sup>



8,329,725 (13.5%)  
boys



8,365,038 (13.5%)  
girls

## 47%

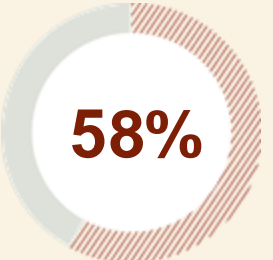
of the youngest children aged **24–59 months** living with their biological mother are **on-track** in health, learning, and psychosocial well-being<sup>2</sup>



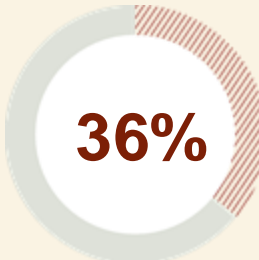
51% girls  
on-track



44% boys  
on-track



58%  
24 - 35 months  
on-track



36%  
48 - 59 months  
on-track

# THE NATIONAL MULTISECTORAL EARLY CHILDHOOD DEVELOPMENT PROGRAMME (NM-ECDP 2021/2022 – 2025/2026)

- Guided by the principles of the **Nurturing Care Framework** to provide nurturing care services to all young children with **four long-term outcomes**:
  - Improved **Enabling Environment** for Coordination and Delivery of ECD services.
  - Strengthened Systems for Service Delivery & Quality Assurance.
  - Increased **Access to Quality Coordinated Nurturing Care Services**.
  - **Empowered caregivers and communities** to adopt nurturing care practices for young children aged 0 – 8 years.
- **Multisectoral utilization of existing platforms and services**: universal health system and early learning platforms to integrate all nurturing care components.
- Specific **Health sector** key ECD responsibilities and activities:
  - Review health related documents like ANC, postnatal care, CTC, IMCI health package to incorporate Nurturing care components.
  - Increase comprehensive health services provision, monitoring and assessment of young children.



UNITED REPUBLIC OF TANZANIA

MINISTRY OF HEALTH, COMMUNITY  
DEVELOPMENT, GENDER, ELDERLY AND CHILDREN

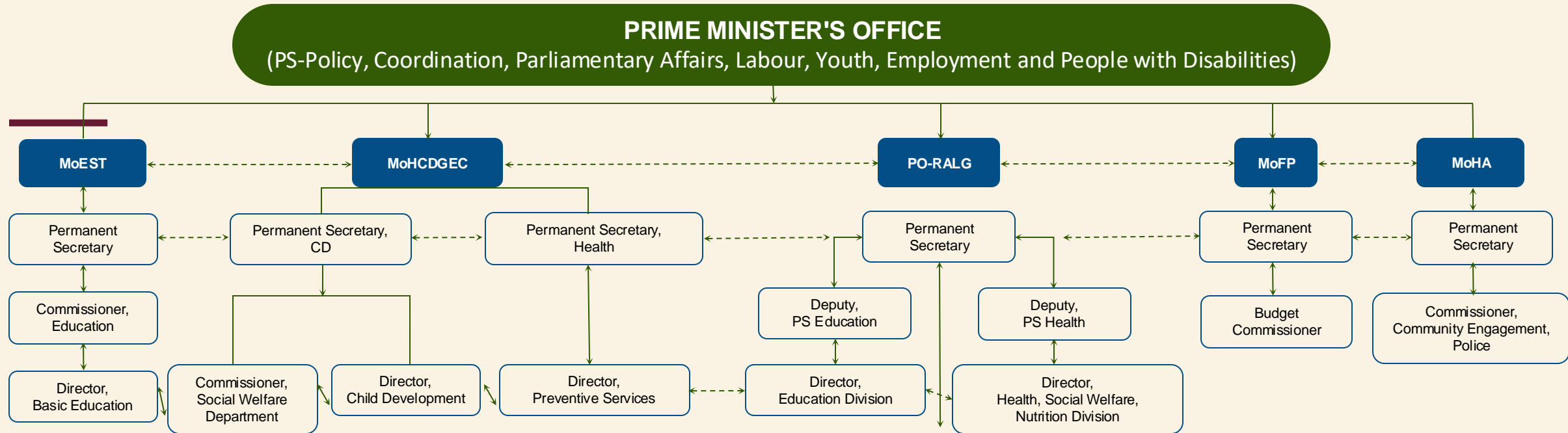


NATIONAL MULTI-SECTORAL EARLY  
CHILDHOOD DEVELOPMENT PROGRAMME  
(NM-ECDP) 2021/22 - 2025/26

Link: [NM-ECDP](#)

DECEMBER 2021

# COORDINATION AND MONITORING



- **Prime Minister's Office** leads and coordinates overall NM-ECDP.
- **MoCDGWSG** takes on the technical leadership.
- **PO-RALG** coordinates and supervises M&E of regions and LGAs.
- **MDAs** ensure ECD mandates.

# COORDINATION AND MONITORING

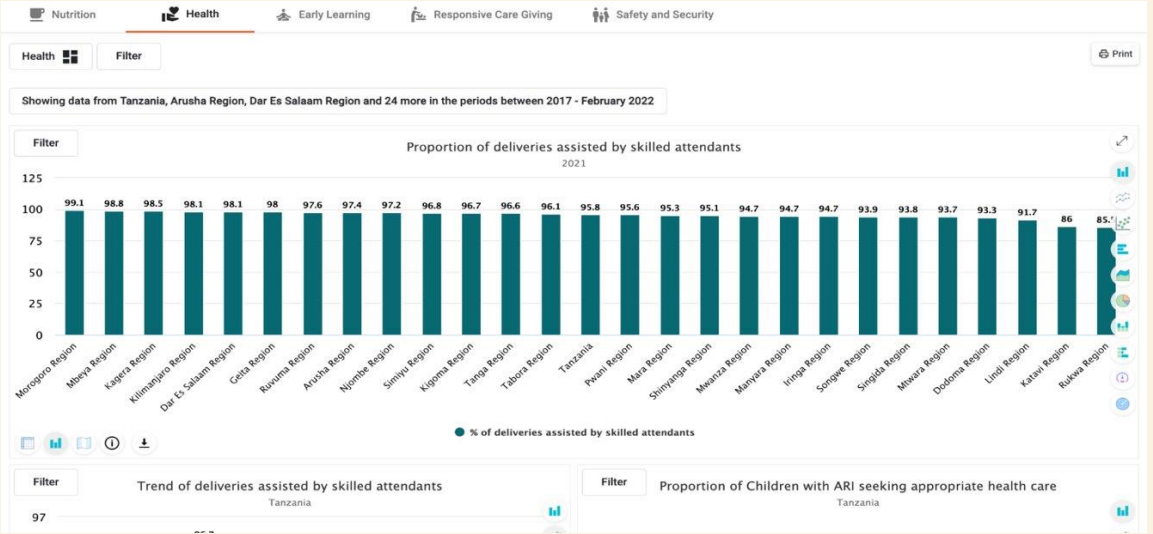
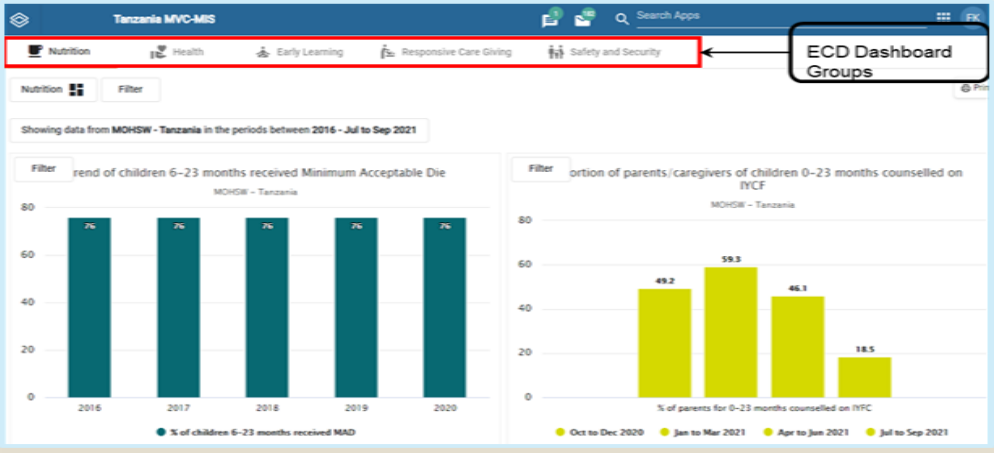
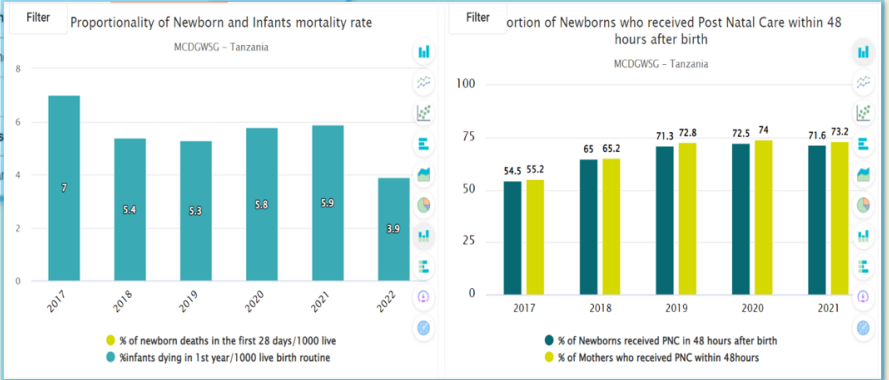
## National ECD Dashboard

- Enhances measurement of implementation performance of the **NM-ECDP Common Results Framework Action Plan**.
- Indicators** from 5 major Nurturing Care Components.
- Links the data captured from the various data reporting systems i.e. HMIS, Nutrition, Sanitation, TDHS, BEST, RITA, etc.

Organisation Unit: Ilala City Council  
 Data Set: ECD Monthly Council Report Form  
 Period: March 2022

JAMHURI YA MUUNGANO WA TANZANIA  
 WIZARA YA MAENDELEO YA JAMII, JINSIA, WANAWAKE, NA MAKUNDI MAALUM  
 MUHTASARI WA TAARIFA YA MWEZI YA ECD

	1. Proportion of children 0 - 5 months exclusively breastfed	5.1
DHS2	Number of children 0 - 5 months exclusively breastfed	6734
NBS	Population of infants 0-5 months of age	133140



# REFLECTION

## Achievements

---

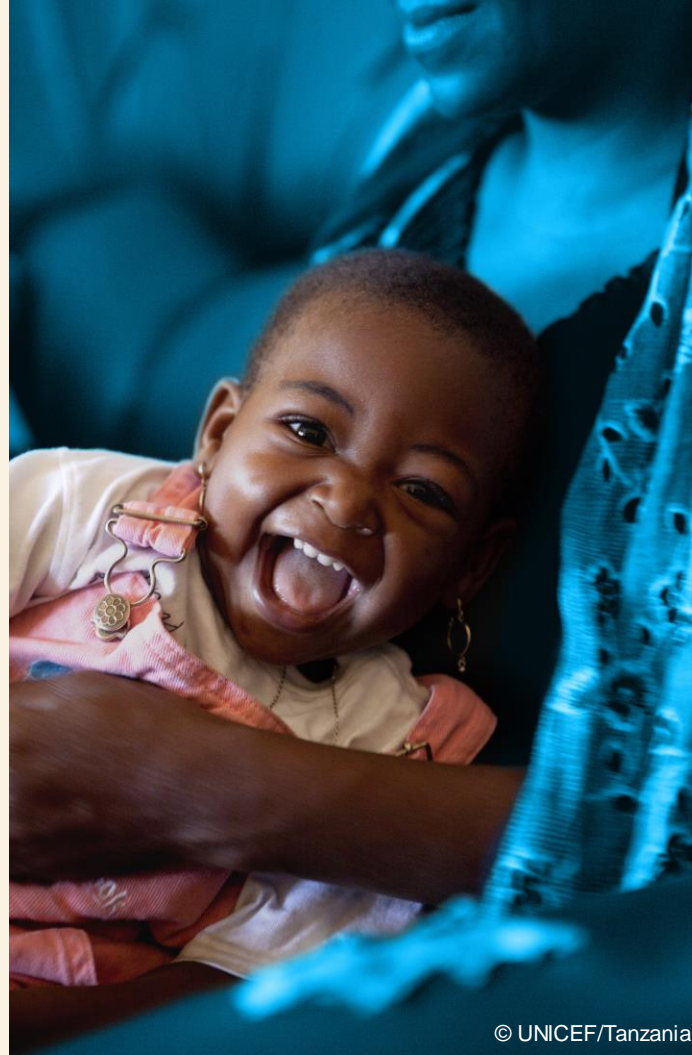
- **Dissemination of NMECDP and establishment of ECD region and Council coordination mechanisms.**
- **A formalized CHW Cadre** providing them with technical and professional resources necessary to support the implementation community health care services.
- **Uptake by health sector:** Responsive caregiving integrated into health policy, Child Health Booklet, national guideline for neonatal care, IMCI package and National Plan for Reproductive, Maternal, Newborn, Child and Adolescent Health & Nutrition, **One plan III** (2021-2026)
- **Enhanced multisectoral response** to nurturing care through clear coordination mechanisms
- **Availability of evidence- base and linking multisectoral databases** for targeted intervention and planning



# REFLECTION

## Lessons learned

- **Coordination across sectors and levels is essential.** ECD, being multisectoral, requires strong leadership and coordination mechanisms at different levels.
- **Importance of strengthening the ECD workforce's capacity to deliver holistic services for young children.** Early childhood workforce is diverse- supporting the acquisition of necessary knowledge and skills is crucial.
- **Government leadership and commitment** through the program cycle are fundamental for successful implementation.



© UNICEF/Tanzania

## Challenges

- 53% of the youngest children aged **24–59 months** are developmentally **off-track** in health, learning, and psychosocial well-being.
- Limited fiscal space for ECD at national and local levels.
- Inadequate competent workforce to deliver integrated services.

## Opportunities

- **High political will and commitment.**
- Existence of different partners and platforms to support integrating nurturing care services.

# PRIORITIES IN 2025 & BEYOND

- 
- Strengthen sub national coordination mechanism for NM-ECDP.
  - Strengthen the capacity of ECD frontline workers (using the National integrated ECD package).
  - Ensure availability and usability of child health booklets.
  - Conduct NM-ECDP endline evaluation.
  - Parenting for early years through the Health & Community Platform.
  - Pilot and scale holistic ECD models.
  - Scale up of childcare campaign to increase awareness on ECD at the community level.





# Thank you

---

---

