



# Dominican Republic

Countdown to 2030

Women's, Children's & Adolescents' Health

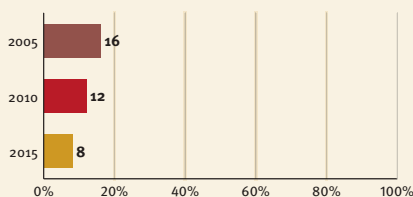
## Demographics

Population	10 649 000
Annual births	216 000
Children under 5	1 060 000 (10%)
Under 5 mortality	31/1 000

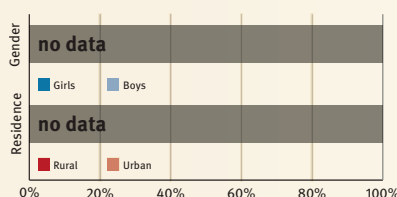
## Threats to Early Childhood Development

Maternal mortality	92/100 000	Young mothers (births by 18y)	21%
Low birthweight	11%	Preterm births	11%
Child poverty	2%	Under 5 stunting	7%
Harsh punishment	63%	Inadequate supervision	58%

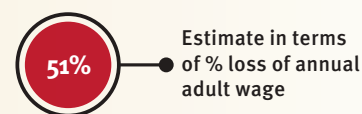
## Young children at risk of poor development



## Risks by gender and residence



## Lifetime cost of growth deficit in early childhood

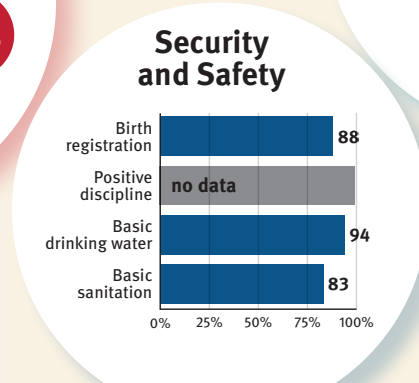
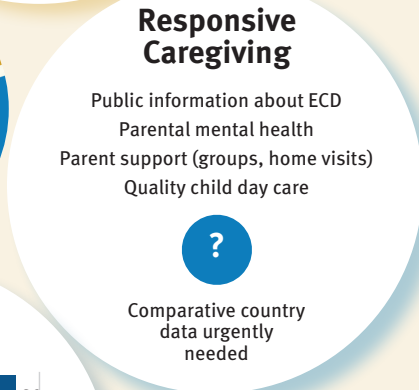
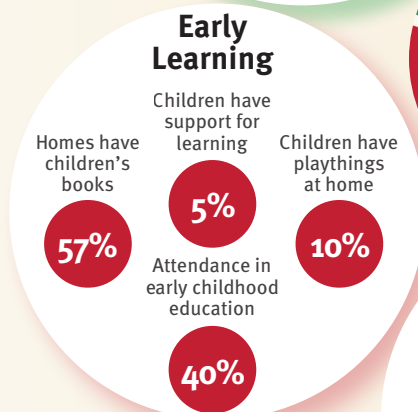
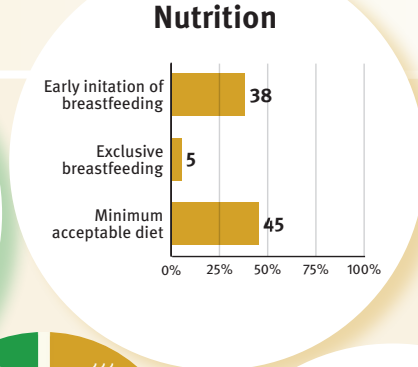
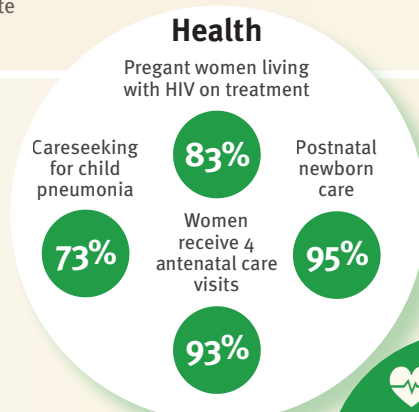


At risk in 2005, 2010 and 2015, using a composite indicator of under 5 stunting or poverty

## Support and services for Early Childhood Development: Nurturing Care

Parents and caregivers need a facilitating environment of laws, policies, services and community support to assist them to provide their young children with nurturing care.

## Support and services for Early Childhood Development: Facilitating Environments



### Policies

✗ Paid maternity leave	✓ Paid paternity leave
✓ National minimum wage	
✓ Child and family social protection	
✓ International Code of Marketing of Breastmilk Substitutes	

### International Conventions

✓ Convention on the Rights of the Child
✓ Convention on the Rights of People with Disabilities
✓ CRC Sale of Children, Child Prostitution & Child Pornography
✓ Convention on Protection of Children and Cooperation in Respect of Intercountry Adoption