



# Sao Tome and Principe

Countdown to 2030

Women's, Children's & Adolescents' Health

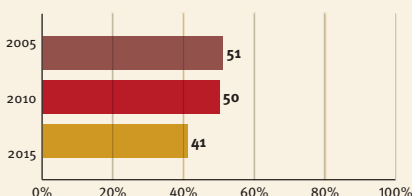
## Demographics

Population	200 000
Annual births	7 000
Children under 5	31 000 (16%)
Under 5 mortality	34/1 000

## Threats to Early Childhood Development

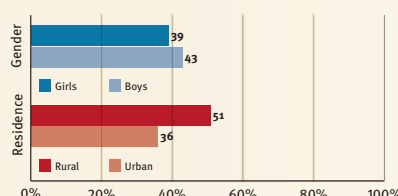
Maternal mortality	156/100 000	Young mothers (births by 18y)	27%
Low birthweight	10%	Preterm births	10%
Child poverty	29%	Under 5 stunting	17%
Harsh punishment	80%	Inadequate supervision	63%

## Young children at risk of poor development

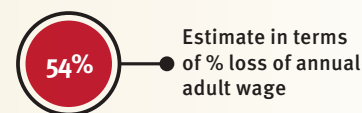


At risk in 2005, 2010 and 2015, using a composite indicator of under 5 stunting or poverty

## Risks by gender and residence



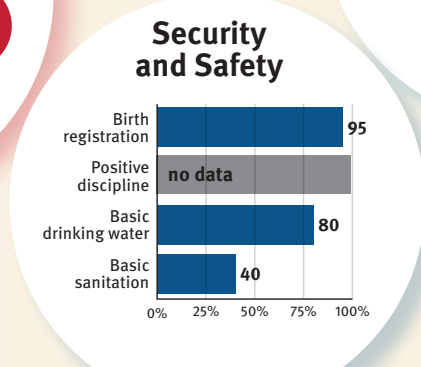
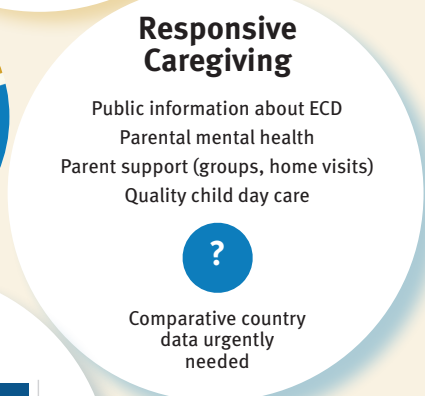
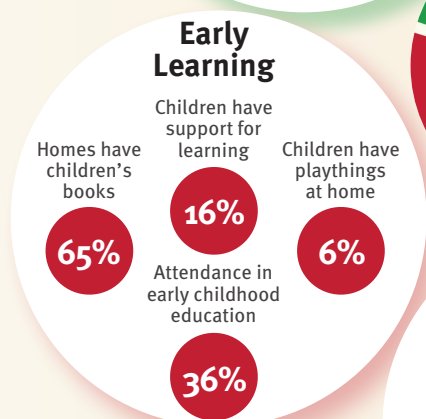
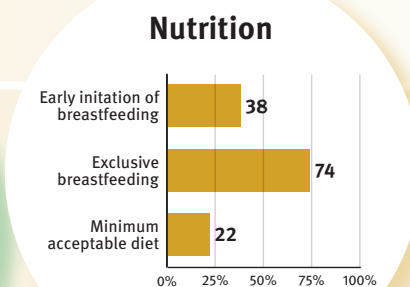
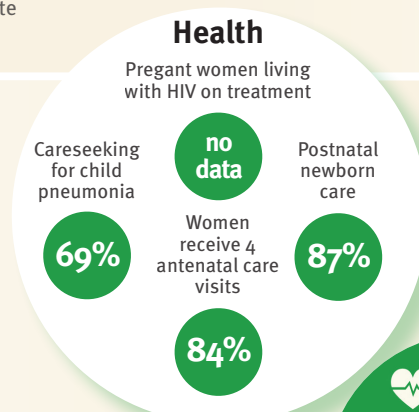
## Lifetime cost of growth deficit in early childhood



## Support and services for Early Childhood Development: Nurturing Care

Parents and caregivers need a facilitating environment of laws, policies, services and community support to assist them to provide their young children with nurturing care.

## Support and services for Early Childhood Development: Facilitating Environments



### Policies

✗	Paid maternity leave	✗	Paid paternity leave
no data	National minimum wage		
✗	Child and family social protection		
✗	International Code of Marketing of Breastmilk Substitutes		

### International Conventions

✓	Convention on the Rights of the Child
✗	Convention on the Rights of People with Disabilities
✓	CRC Sale of Children, Child Prostitution & Child Pornography
✗	Convention on Protection of Children and Cooperation in Respect of Intercountry Adoption