



Mozambique

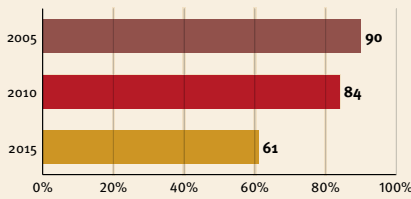
Demographics

| | |
|-------------------|-----------------|
| Population | 28 829 000 |
| Annual births | 1 105 000 |
| Children under 5 | 4 950 000 (17%) |
| Under 5 mortality | 71/1 000 |

Threats to Early Childhood Development

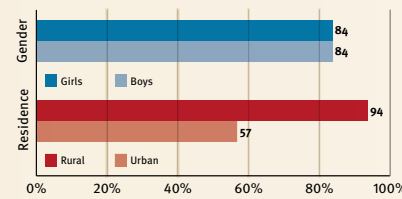
| | | | |
|--------------------|-------------|-------------------------------|-----|
| Maternal mortality | 489/100 000 | Young mothers (births by 18y) | 40% |
| Low birthweight | 17% | Preterm births | 16% |
| Child poverty | 82% | Under 5 stunting | 41% |
| Harsh punishment | no data | Inadequate supervision | 47% |

Young children at risk of poor development

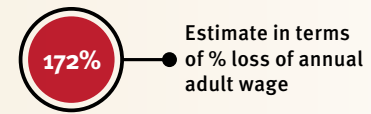


At risk in 2005, 2010 and 2015, using a composite indicator of under 5 stunting or poverty

Risks by gender and residence



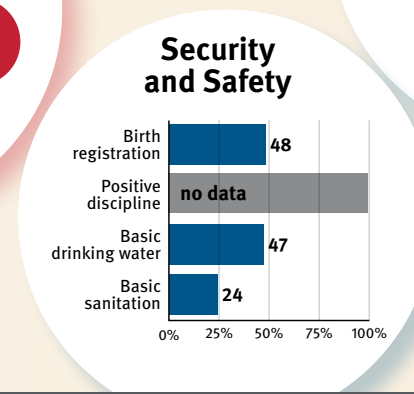
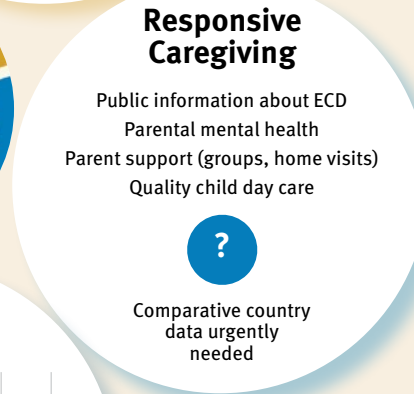
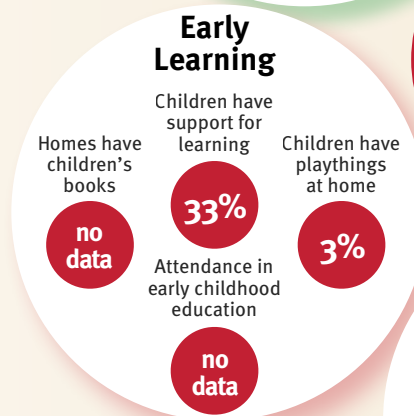
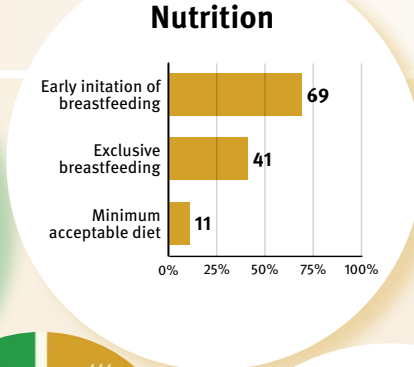
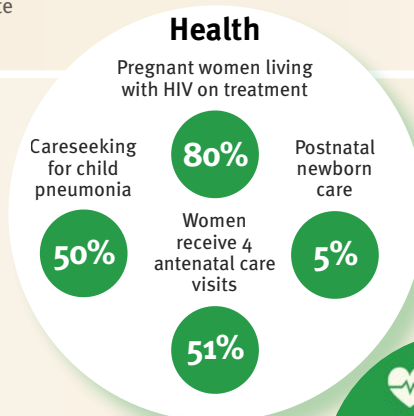
Lifetime cost of growth deficit in early childhood



Support and services for Early Childhood Development: Nurturing Care

Parents and caregivers need a facilitating environment of laws, policies, services and community support to assist them to provide their young children with nurturing care.

Support and services for Early Childhood Development: Facilitating Environments



Policies

| | |
|---|------------------------|
| ✗ Paid maternity leave | ✓ Paid paternity leave |
| ✓ National minimum wage | |
| ✓ Child and family social protection | |
| ✓ International Code of Marketing of Breastmilk Substitutes | |

International Conventions

| |
|--|
| ✓ Convention on the Rights of the Child |
| ✓ Convention on the Rights of People with Disabilities |
| ✓ CRC Sale of Children, Child Prostitution & Child Pornography |
| ✗ Convention on Protection of Children and Cooperation in Respect of Intercountry Adoption |