



# Sudan

Countdown to 2030

Women's, Children's & Adolescents' Health

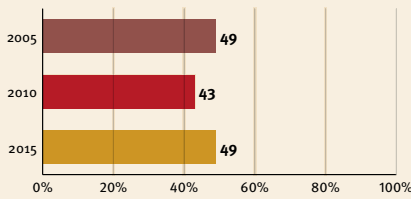
## Demographics

|                   |                 |
|-------------------|-----------------|
| Population        | 39 579 000      |
| Annual births     | 1 290 000       |
| Children under 5  | 5 940 000 (15%) |
| Under 5 mortality | 65/1 000        |

## Threats to Early Childhood Development

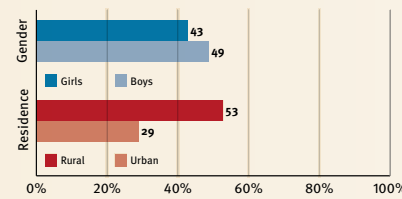
|                    |             |                               |         |
|--------------------|-------------|-------------------------------|---------|
| Maternal mortality | 311/100 000 | Young mothers (births by 18y) | 22%     |
| Low birthweight    | no data     | Preterm births                | 13%     |
| Child poverty      | 17%         | Under 5 stunting              | 38%     |
| Harsh punishment   | 64%         | Inadequate supervision        | no data |

## Young children at risk of poor development

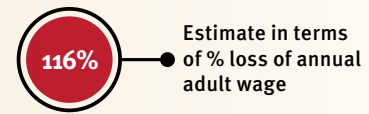


At risk in 2005, 2010 and 2015, using a composite indicator of under 5 stunting or poverty

## Risks by gender and residence



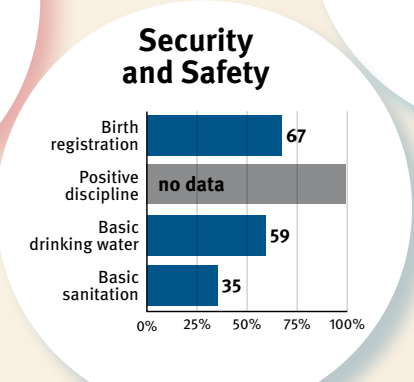
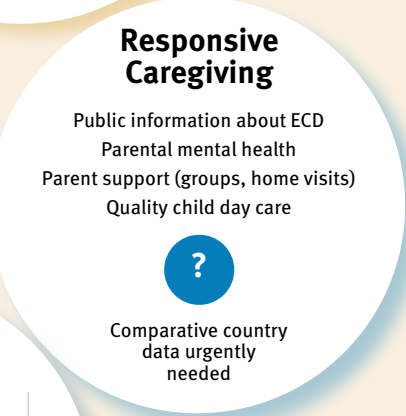
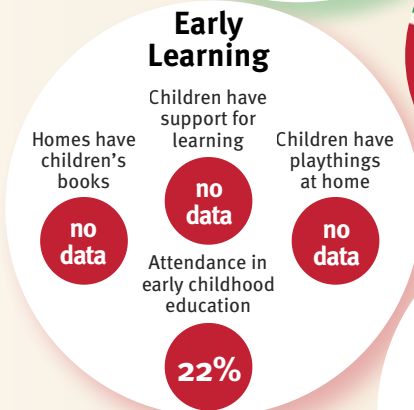
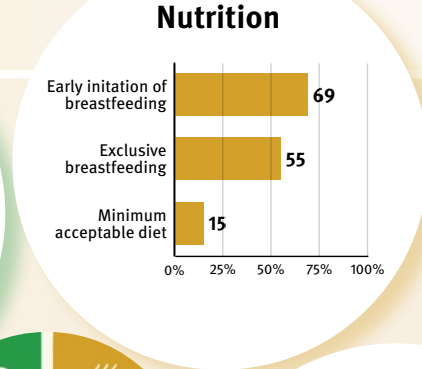
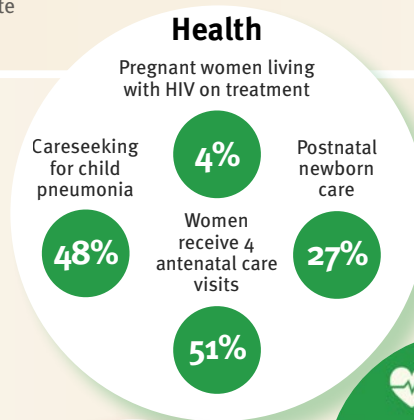
## Lifetime cost of growth deficit in early childhood



## Support and services for Early Childhood Development: Nurturing Care

Parents and caregivers need a facilitating environment of laws, policies, services and community support to assist them to provide their young children with nurturing care.

## Support and services for Early Childhood Development: Facilitating Environments



### Policies

|   |   |   |                      |
|---|---|---|----------------------|
| ✗ | Paid maternity leave                                      | ✗ | Paid paternity leave |
| ✓ | National minimum wage                                     |   |                      |
| ✗ | Child and family social protection                        |   |                      |
| ✓ | International Code of Marketing of Breastmilk Substitutes |   |                      |

### International Conventions

|   |  |
|---|--|
| ✓ | Convention on the Rights of the Child  |
| ✓ | Convention on the Rights of People with Disabilities                                     |
| ✓ | CRC Sale of Children, Child Prostitution & Child Pornography                             |
| ✗ | Convention on Protection of Children and Cooperation in Respect of Intercountry Adoption |