



Cabo Verde

Countdown to 2030

Women's, Children's & Adolescents' Health

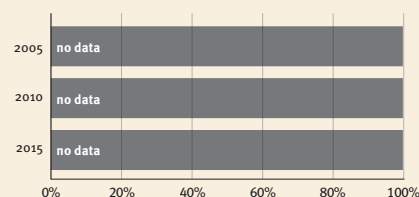
Demographics

Population (2019)	550,000
Annual births	10,000
Children under 5 (2019)	53,000 (10%)
Under-five mortality	19/1 000

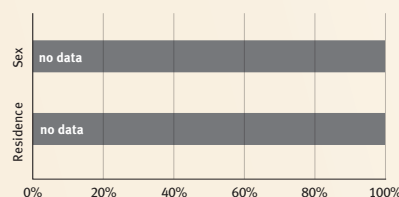
Threats to Early Childhood Development

Maternal mortality	58/100 000	Young mothers (births by 18y)	22%
Low birthweight	no data	Preterm births	11%
Child poverty	no data	Under-five stunting	21%
Violent discipline	no data	Inadequate supervision	no data

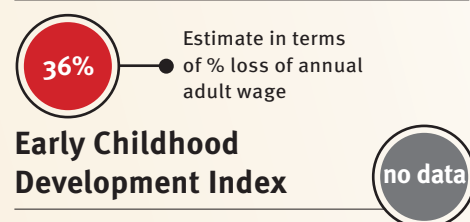
Young children at risk of poor development



Risk by sex and residence



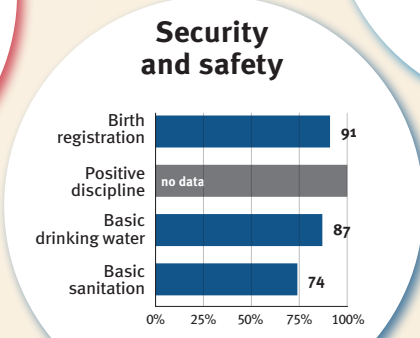
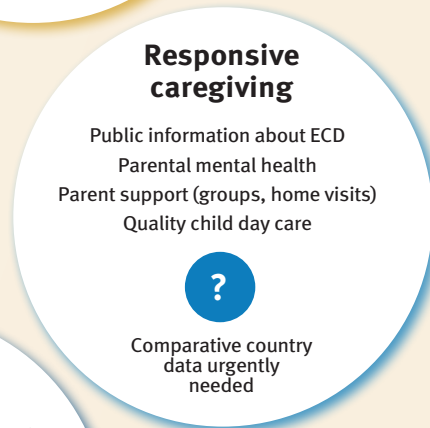
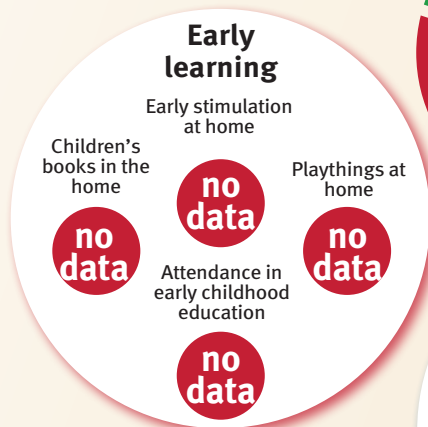
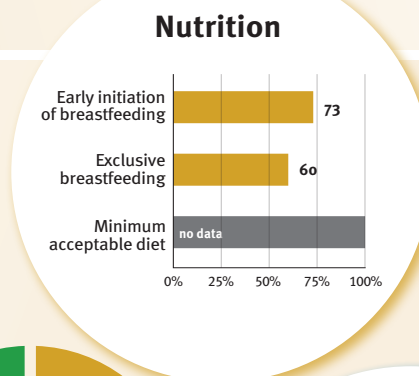
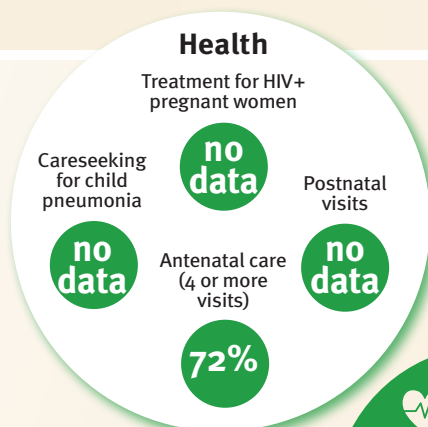
Lifetime cost of growth deficit in early childhood



At risk in 2005, 2010 and 2015, using a composite indicator of under-five stunting or poverty

Support and services for early childhood development: Nurturing care

Parents and caregivers need a facilitating environment of laws, policies, services and community support to assist them in providing their young children with nurturing care.



Facilitating environments

Policies	
✗	Paid maternity leave
✓	Paid paternity leave
no data	National minimum wage
✗	Child and family social protection
✓	International Code of Marketing of Breastmilk Substitutes

International conventions	
✓	Convention on the Rights of the Child
✓	Convention on the Rights of Persons with Disabilities
✓	CRC Optional Protocol on the Sale of Children, Child Prostitution and Child Pornography
✓	Hague Convention on Protection of Children and Cooperation in Respect of Intercountry Adoption