



## Colombia

Countdown to 2030

Women's, Children's & Adolescents' Health

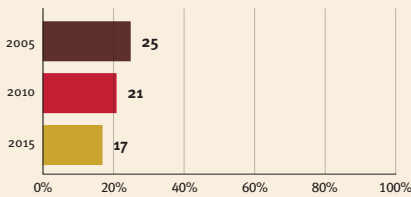
### Demographics

|                         |                |
|-------------------------|----------------|
| Population (2019)       | 50,339,000     |
| Annual births           | 732,000        |
| Children under 5 (2019) | 3,730,000 (7%) |
| Under-five mortality    | 14/1 000       |

### Threats to Early Childhood Development

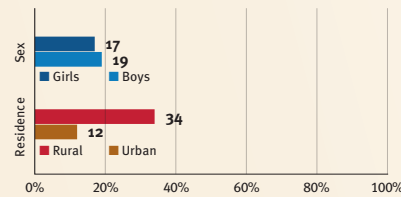
|                    |            |                               |         |
|--------------------|------------|-------------------------------|---------|
| Maternal mortality | 83/100 000 | Young mothers (births by 18y) | 20%     |
| Low birthweight    | 10%        | Preterm births                | 9%      |
| Child poverty      | 7%         | Under-five stunting           | 13%     |
| Violent discipline | no data    | Inadequate supervision        | no data |

### Young children at risk of poor development

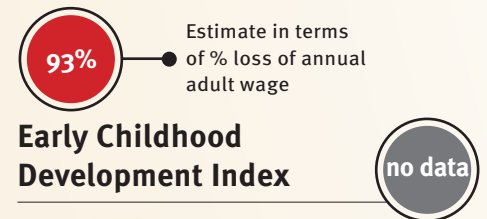


At risk in 2005, 2010 and 2015, using a composite indicator of under-five stunting or poverty

### Risk by sex and residence

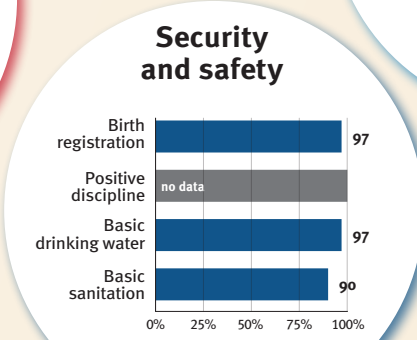
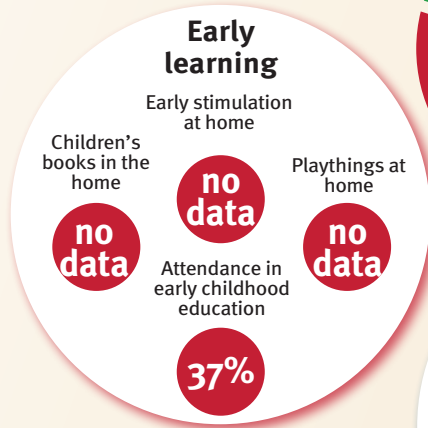
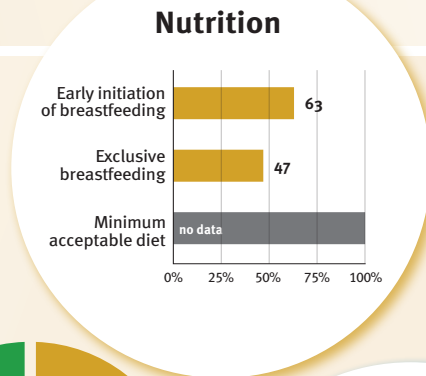
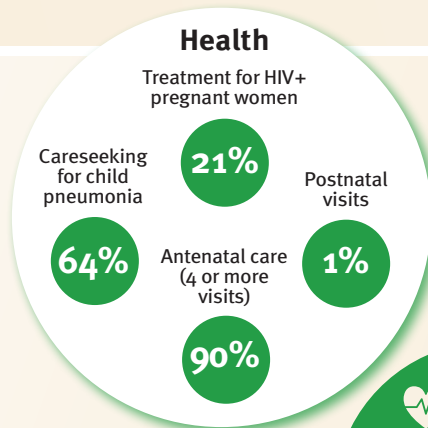


### Lifetime cost of growth deficit in early childhood



## Support and services for early childhood development: Nurturing care

Parents and caregivers need a facilitating environment of laws, policies, services and community support to assist them in providing their young children with nurturing care.



## Facilitating environments

| Policies |   |
|----------|---|
| ✗        | Paid maternity leave                                      |
| ✓        | Paid paternity leave                                      |
| ✓        | National minimum wage                                     |
| ✓        | Child and family social protection                        |
| ✓        | International Code of Marketing of Breastmilk Substitutes |

| International conventions |  |
|---------------------------|--|
| ✓                         | Convention on the Rights of the Child  |
| ✓                         | Convention on the Rights of Persons with Disabilities  |
| ✓                         | CRC Optional Protocol on the Sale of Children, Child Prostitution and Child Pornography        |
| ✓                         | Hague Convention on Protection of Children and Cooperation in Respect of Intercountry Adoption |