



Costa Rica

Countdown to 2030

Women's, Children's & Adolescents' Health

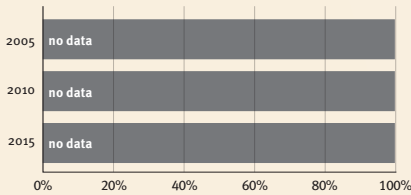
Demographics

| | |
|-------------------------|--------------|
| Population (2019) | 5,048,000 |
| Annual births | 69,000 |
| Children under 5 (2019) | 351,000 (7%) |
| Under-five mortality | 9/1 000 |

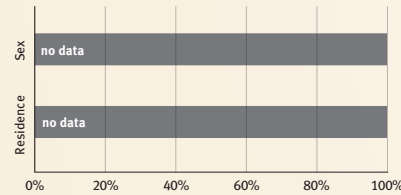
Threats to Early Childhood Development

| | | | |
|--------------------|------------|-------------------------------|-----|
| Maternal mortality | 27/100 000 | Young mothers (births by 18y) | 13% |
| Low birthweight | 7% | Preterm births | 14% |
| Child poverty | no data | Under-five stunting | 6% |
| Violent discipline | 56% | Inadequate supervision | 4% |

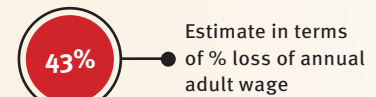
Young children at risk of poor development



Risk by sex and residence



Lifetime cost of growth deficit in early childhood



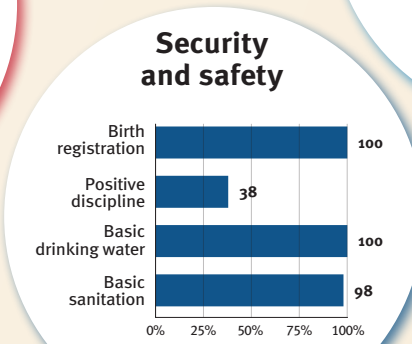
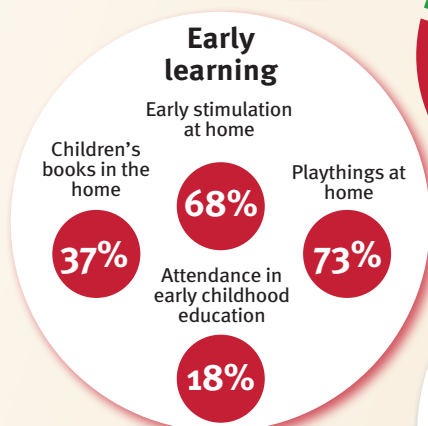
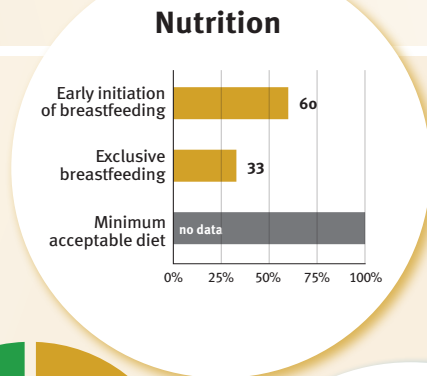
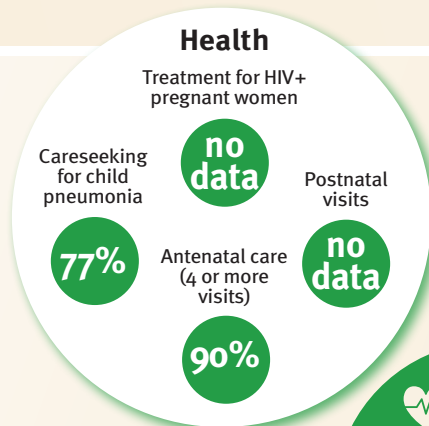
Early Childhood Development Index



At risk in 2005, 2010 and 2015, using a composite indicator of under-five stunting or poverty

Support and services for early childhood development: Nurturing care

Parents and caregivers need a facilitating environment of laws, policies, services and community support to assist them in providing their young children with nurturing care.



Facilitating environments

| Policies | |
|---|------------------------|
| ✓ Paid maternity leave | ✗ Paid paternity leave |
| ✓ National minimum wage | |
| ✓ Child and family social protection | |
| ✓ International Code of Marketing of Breastmilk Substitutes | |

| International conventions | |
|---------------------------|--|
| ✓ | Convention on the Rights of the Child |
| ✓ | Convention on the Rights of Persons with Disabilities |
| ✓ | CRC Optional Protocol on the Sale of Children, Child Prostitution and Child Pornography |
| ✓ | Hague Convention on Protection of Children and Cooperation in Respect of Intercountry Adoption |