



# Dominican Republic

Countdown to 2030

Women's, Children's & Adolescents' Health

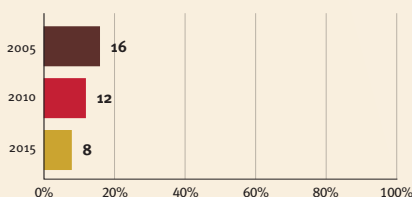
## Demographics

Population (2019)	10,739,000
Annual births	206,000
Children under 5 (2019)	1,007,000 (9%)
Under-five mortality	29/1 000

## Threats to Early Childhood Development

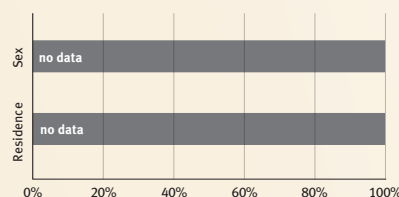
Maternal mortality	95/100 000	Young mothers (births by 18y)	21%
Low birthweight	11%	Preterm births	11%
Child poverty	2%	Under-five stunting	7%
Violent discipline	62%	Inadequate supervision	5%

## Young children at risk of poor development

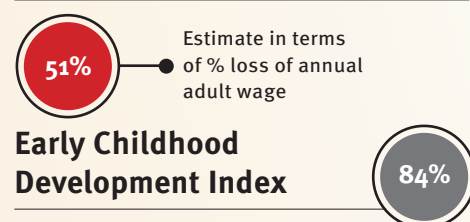


At risk in 2005, 2010 and 2015, using a composite indicator of under-five stunting or poverty

## Risk by sex and residence

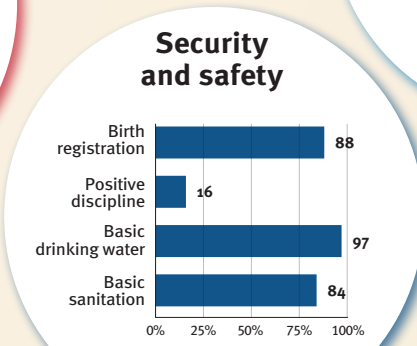
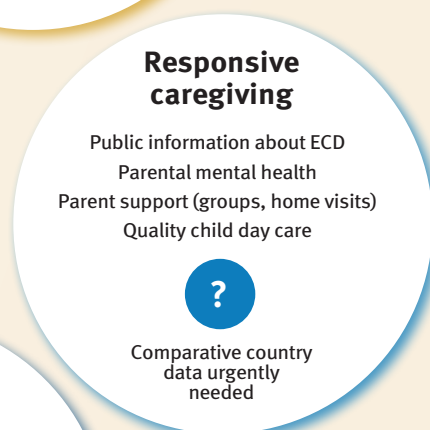
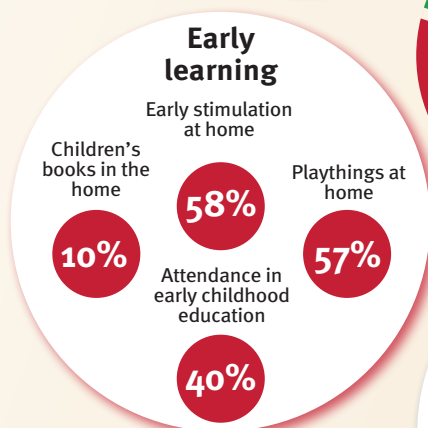
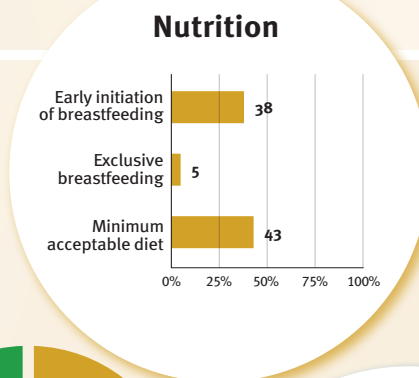
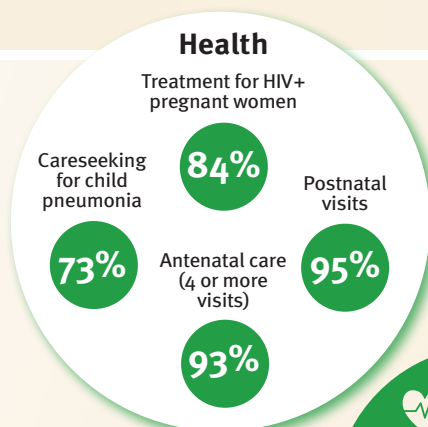


## Lifetime cost of growth deficit in early childhood



## Support and services for early childhood development: Nurturing care

Parents and caregivers need a facilitating environment of laws, policies, services and community support to assist them in providing their young children with nurturing care.



## Facilitating environments

### Policies

✗ Paid maternity leave	✓ Paid paternity leave
✓ National minimum wage	
✓ Child and family social protection	
✓ International Code of Marketing of Breastmilk Substitutes	

### International conventions

✓ Convention on the Rights of the Child
✓ Convention on the Rights of Persons with Disabilities
✓ CRC Optional Protocol on the Sale of Children, Child Prostitution and Child Pornography
✓ Hague Convention on Protection of Children and Cooperation in Respect of Intercountry Adoption