



# Sao Tome and Principe

Countdown to 2030

Women's, Children's & Adolescents' Health

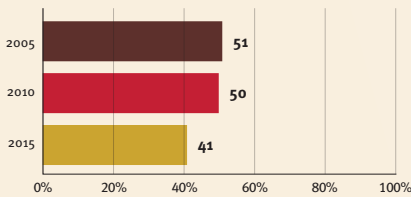
## Demographics

Population (2019)	215,000
Annual births	7,000
Children under 5 (2019)	32,000 (15%)
Under-five mortality	31/1 000

## Threats to Early Childhood Development

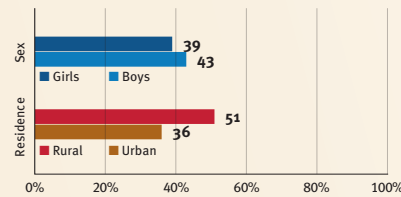
Maternal mortality	130/100 000	Young mothers (births by 18y)	27%
Low birthweight	7%	Preterm births	11%
Child poverty	29%	Under-five stunting	17%
Violent discipline	75%	Inadequate supervision	16%

## Young children at risk of poor development

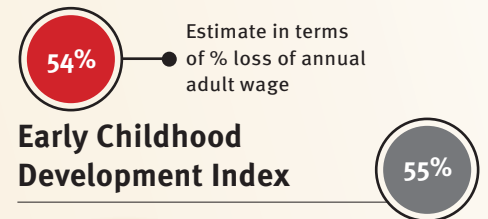


At risk in 2005, 2010 and 2015, using a composite indicator of under-five stunting or poverty

## Risk by sex and residence



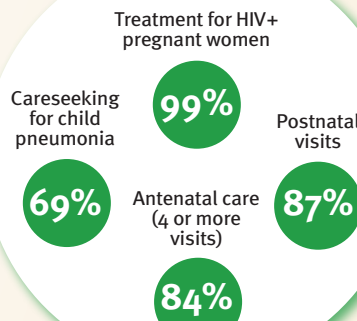
## Lifetime cost of growth deficit in early childhood



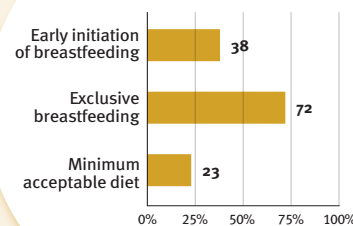
## Support and services for early childhood development: Nurturing care

Parents and caregivers need a facilitating environment of laws, policies, services and community support to assist them in providing their young children with nurturing care.

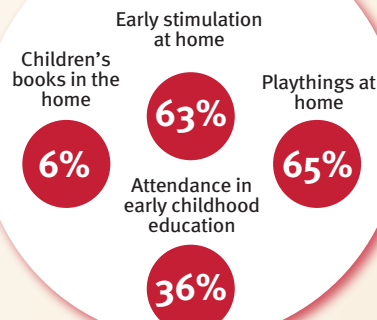
### Health



### Nutrition



### Early learning



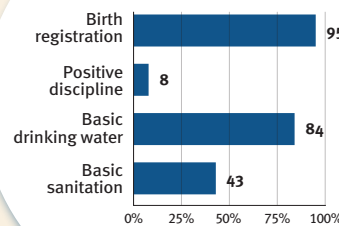
### Responsive caregiving

Public information about ECD  
Parental mental health  
Parent support (groups, home visits)  
Quality child day care



Comparative country data urgently needed

### Security and safety



## Facilitating environments

### Policies

X	Paid maternity leave	X	Paid paternity leave
no data	National minimum wage		
X	Child and family social protection		
X	International Code of Marketing of Breastmilk Substitutes		

### International conventions

✓	Convention on the Rights of the Child
✓	Convention on the Rights of Persons with Disabilities
✓	CRC Optional Protocol on the Sale of Children, Child Prostitution and Child Pornography
X	Hague Convention on Protection of Children and Cooperation in Respect of Intercountry Adoption