



## Barbados

Countdown to 2030

Women's, Children's & Adolescents' Health

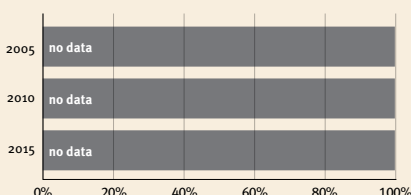
### Demographics

Population	287,371
Annual births	3,045
Children under 5	15,120 (5%)
Under-five mortality	13/1,000

### Threats to Early Childhood Development

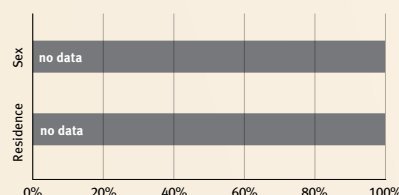
Maternal mortality	27/100,000	Young mothers (births by 18y)	no data
Low birthweight	no data	Preterm births	9%
Child poverty	no data	Under-five stunting	8%
Violent discipline	78%	Inadequate supervision	1%

### Young children at risk of poor development



At risk in 2005, 2010 and 2015, using a composite indicator of under-five stunting or poverty

### Risk by sex and residence



### Lifetime cost of growth deficit in early childhood

no data Estimate in terms of % loss of annual adult wage

### Children with functional difficulty

no data

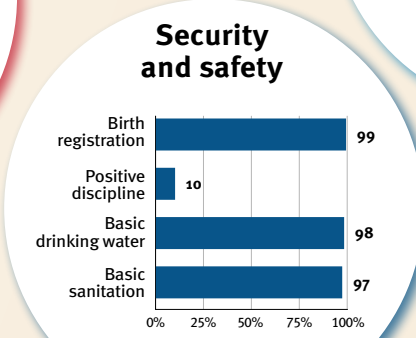
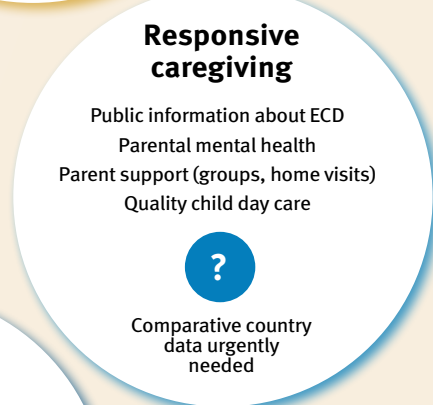
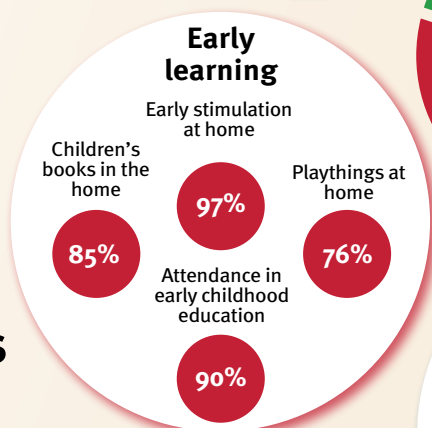
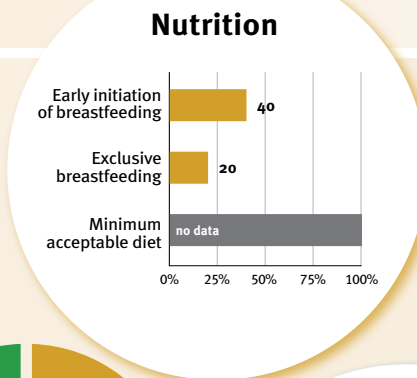
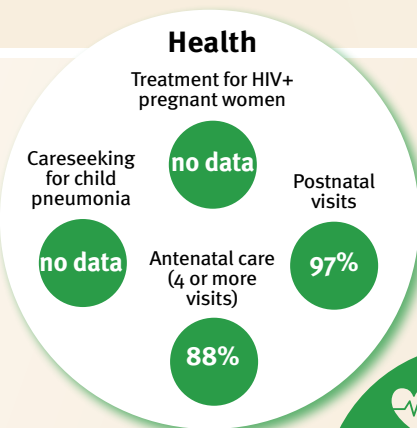
### Children developmentally on-track

97%

## Support and services for early childhood development: Nurturing care

Parents and caregivers need a facilitating environment of laws, policies, services and community support to assist them in providing their young children with nurturing care.

## Facilitating environments



### Policies

	None	<14	14 - <18	18 - <26	≥26
Paid maternity leave (weeks)					
Paid paternity leave (weeks)					

	Not	Slightly	Moderately	Substantially
International Code of Marketing of Breastmilk Substitutes (alignment)				
National minimum wage	✓			
Child and family social protection	✗			

### International conventions

✓	Convention on the Rights of the Child
✓	Convention on the Rights of Persons with Disabilities
✗	CRC Optional Protocol on the Sale of Children, Child Prostitution and Child Pornography
✗	Hague Convention on Protection of Children and Cooperation in Respect of Intercountry Adoption