



Cabo Verde

Countdown to 2030

Women's, Children's & Adolescents' Health

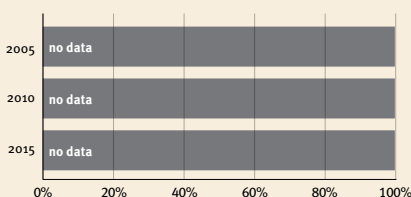
Demographics

Population	555,988
Annual births	10,357
Children under 5	51,932 (9%)
Under-five mortality	15/1,000

Threats to Early Childhood Development

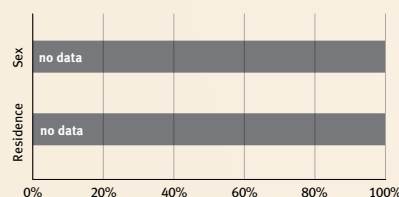
Maternal mortality	58/100,000	Young mothers (births by 18y)	22%
Low birthweight	no data	Preterm births	11%
Child poverty	no data	Under-five stunting	21%
Violent discipline	no data	Inadequate supervision	no data

Young children at risk of poor development

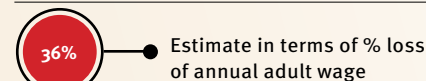


At risk in 2005, 2010 and 2015, using a composite indicator of under-five stunting or poverty

Risk by sex and residence



Lifetime cost of growth deficit in early childhood



Children with functional difficulty

no data

Children developmentally on-track

no data

Support and services for early childhood development: Nurturing care

Parents and caregivers need a facilitating environment of laws, policies, services and community support to assist them in providing their young children with nurturing care.

Facilitating environments

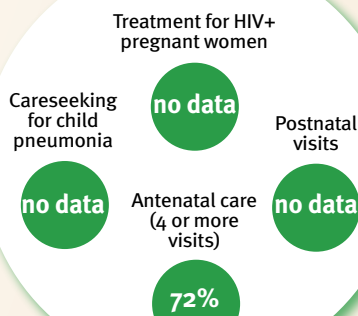
Policies

	None	<14	14 - <18	18 - <26	≥26
Paid maternity leave (weeks)					
Paid paternity leave (weeks)					

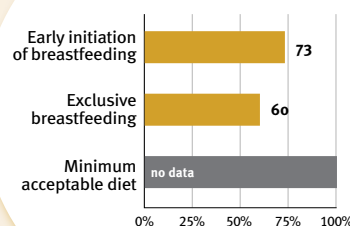
	Not	Slightly	Moderately	Substantially
International Code of Marketing of Breastmilk Substitutes (alignment)				

- X National minimum wage
- X Child and family social protection

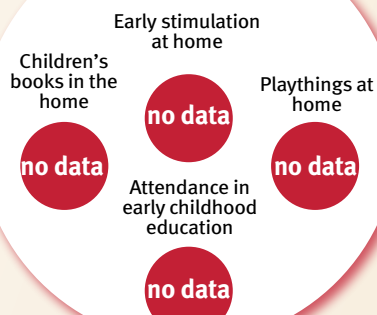
Health



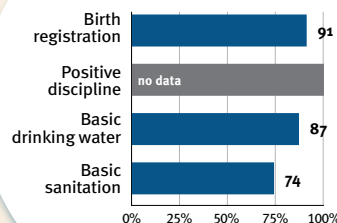
Nutrition



Early learning



Security and safety



Responsive caregiving

- Public information about ECD
- Parental mental health
- Parent support (groups, home visits)
- Quality child day care

Comparative country data urgently needed

International conventions

- ✓ Convention on the Rights of the Child
- ✓ Convention on the Rights of Persons with Disabilities
- ✓ CRC Optional Protocol on the Sale of Children, Child Prostitution and Child Pornography
- ✓ Hague Convention on Protection of Children and Cooperation in Respect of Intercountry Adoption