



Costa Rica

Countdown to 2030

Women's, Children's & Adolescents' Health

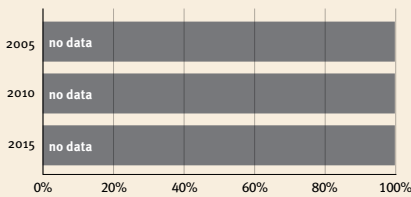
Demographics

Population	5,094,114
Annual births	68,242
Children under 5	348,002 (7%)
Under-five mortality	9/1,000

Threats to Early Childhood Development

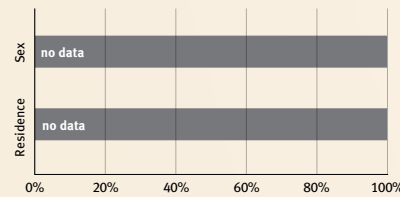
Maternal mortality	27/100,000	Young mothers (births by 18y)	13%
Low birthweight	7%	Preterm births	14%
Child poverty	no data	Under-five stunting	6%
Violent discipline	56%	Inadequate supervision	4%

Young children at risk of poor development

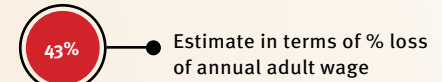


At risk in 2005, 2010 and 2015, using a composite indicator of under-five stunting or poverty

Risk by sex and residence



Lifetime cost of growth deficit in early childhood



Children with functional difficulty

no data

Children developmentally on-track

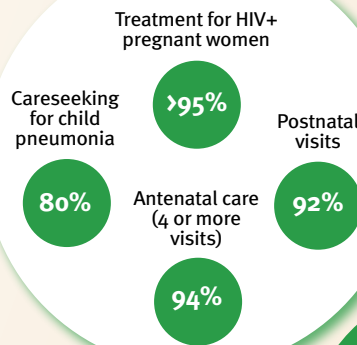
81%

Support and services for early childhood development: Nurturing care

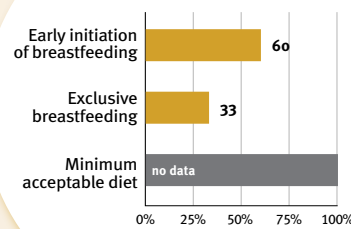
Parents and caregivers need a facilitating environment of laws, policies, services and community support to assist them in providing their young children with nurturing care.

Facilitating environments

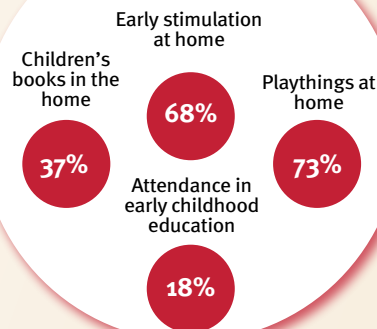
Health



Nutrition



Early learning



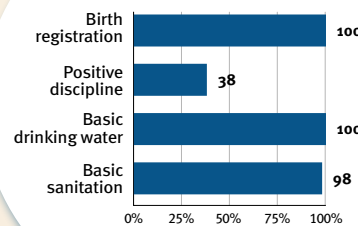
Responsive caregiving

Public information about ECD
Parental mental health
Parent support (groups, home visits)
Quality child day care

?

Comparative country data urgently needed

Security and safety



Policies

	None	<14	14 - <18	18 - <26	≥26
Paid maternity leave (weeks)					
Paid paternity leave (weeks)					

International conventions

✓	Convention on the Rights of the Child
✓	Convention on the Rights of Persons with Disabilities
✓	CRC Optional Protocol on the Sale of Children, Child Prostitution and Child Pornography
✓	Hague Convention on Protection of Children and Cooperation in Respect of Intercountry Adoption