



## Côte D'Ivoire

Countdown to 2030

Women's, Children's & Adolescents' Health

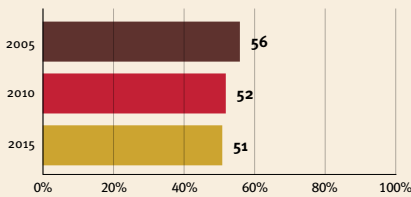
### Demographics

Population	26,378,275
Annual births	928,937
Children under 5	4,131,200 (16%)
Under-five mortality	79/1,000

### Threats to Early Childhood Development

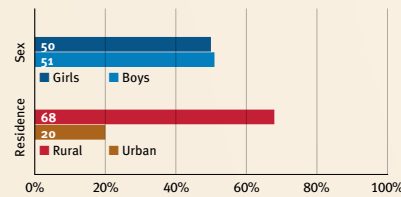
Maternal mortality	617/100,000	Young mothers (births by 18y)	25%
Low birthweight	15%	Preterm births	14%
Child poverty	33%	Under-five stunting	22%
Violent discipline	83%	Inadequate supervision	20%

### Young children at risk of poor development

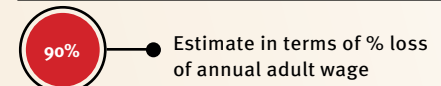


At risk in 2005, 2010 and 2015, using a composite indicator of under-five stunting or poverty

### Risk by sex and residence



### Lifetime cost of growth deficit in early childhood



### Children with functional difficulty

no data

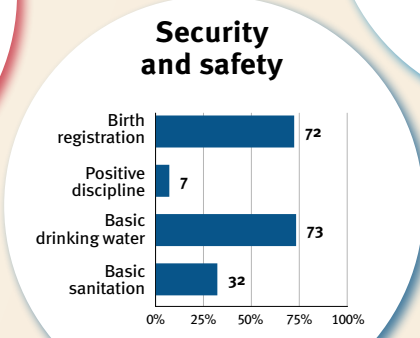
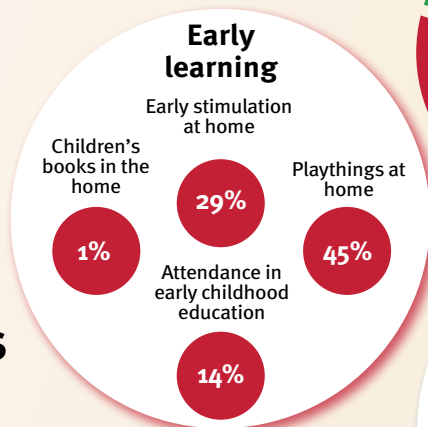
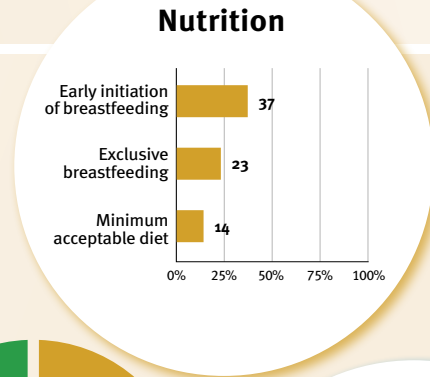
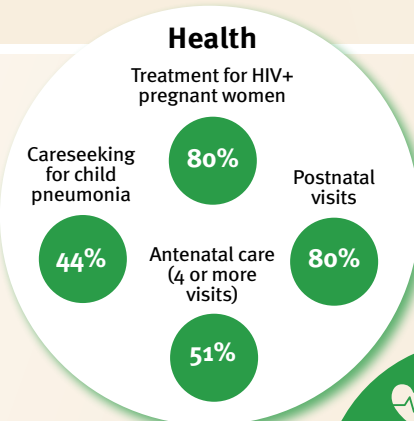
### Children developmentally on-track

63%

## Support and services for early childhood development: Nurturing care

Parents and caregivers need a facilitating environment of laws, policies, services and community support to assist them in providing their young children with nurturing care.

## Facilitating environments



### Policies

None	<14	14 - <18	18 - <26	≥26

Paid maternity leave (weeks)	None	<14	14 - <18	18 - <26	≥26
Paid paternity leave (weeks)					

Not	Slightly	Moderately	Substantially
International Code of Marketing of Breastmilk Substitutes (alignment)			
National minimum wage	✓		
Child and family social protection	✗		

### International conventions

- ✓ Convention on the Rights of the Child
- ✓ Convention on the Rights of Persons with Disabilities
- ✓ CRC Optional Protocol on the Sale of Children, Child Prostitution and Child Pornography
- ✓ Hague Convention on Protection of Children and Cooperation in Respect of Intercountry Adoption