



Czechia

Countdown to 2030

Women's, Children's & Adolescents' Health

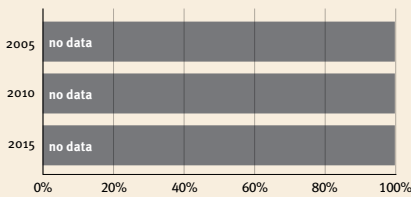
Demographics

Population	10,708,982
Annual births	108,313
Children under 5	558,810 (5%)
Under-five mortality	3/1,000

Threats to Early Childhood Development

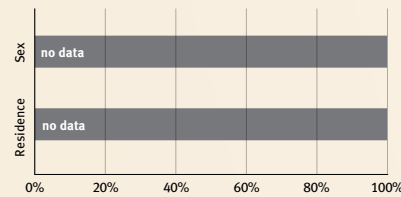
Maternal mortality	3/100,000	Young mothers (births by 18y)	no data
Low birthweight	8%	Preterm births	7%
Child poverty	no data	Under-five stunting	3%
Violent discipline	no data	Inadequate supervision	no data

Young children at risk of poor development



At risk in 2005, 2010 and 2015, using a composite indicator of under-five stunting or poverty

Risk by sex and residence



Lifetime cost of growth deficit in early childhood

no data Estimate in terms of % loss of annual adult wage

Children with functional difficulty

no data

Children developmentally on-track

no data

Support and services for early childhood development: Nurturing care

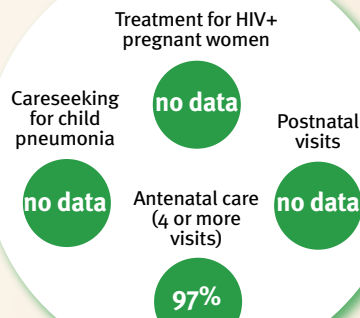
Parents and caregivers need a facilitating environment of laws, policies, services and community support to assist them in providing their young children with nurturing care.

Facilitating environments

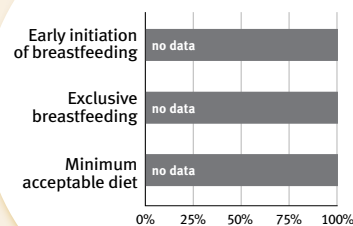
Policies				
None	<14	14 - <18	18 - <26	≥26
Paid maternity leave (weeks)				
None	<14	14 - <18	18 - <26	≥26
Paid paternity leave (weeks)				
None	<14	14 - <18	18 - <26	≥26

Not	Slightly	Moderately	Substantially
International Code of Marketing of Breastmilk Substitutes (alignment)			
✓			
National minimum wage			
✓			
Child and family social protection			
✓			

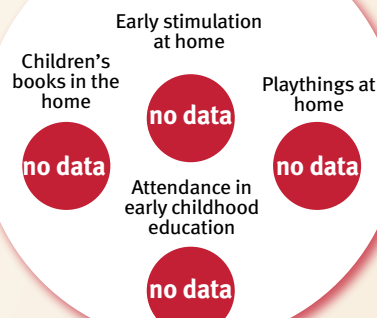
Health



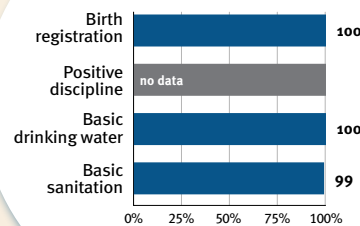
Nutrition



Early learning



Security and safety



Responsive caregiving

Public information about ECD
Parental mental health
Parent support (groups, home visits)
Quality child day care

?

Comparative country data urgently needed

International conventions

✓	Convention on the Rights of the Child
✓	Convention on the Rights of Persons with Disabilities
✓	CRC Optional Protocol on the Sale of Children, Child Prostitution and Child Pornography
✓	Hague Convention on Protection of Children and Cooperation in Respect of Intercountry Adoption