



## Ecuador

Countdown to 2030

Women's, Children's & Adolescents' Health

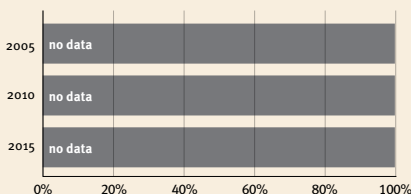
### Demographics

Population	17,643,060
Annual births	337,355
Children under 5	1,667,087 (9%)
Under-five mortality	14/1,000

### Threats to Early Childhood Development

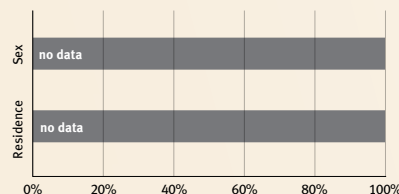
Maternal mortality	59/100,000	Young mothers (births by 18y)	no data
Low birthweight	11%	Preterm births	5%
Child poverty	no data	Under-five stunting	24%
Violent discipline	no data	Inadequate supervision	no data

### Young children at risk of poor development

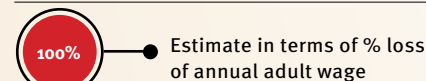


At risk in 2005, 2010 and 2015, using a composite indicator of under-five stunting or poverty

### Risk by sex and residence



### Lifetime cost of growth deficit in early childhood



### Children with functional difficulty

no data

### Children developmentally on-track

no data

## Support and services for early childhood development: Nurturing care

Parents and caregivers need a facilitating environment of laws, policies, services and community support to assist them in providing their young children with nurturing care.

## Facilitating environments

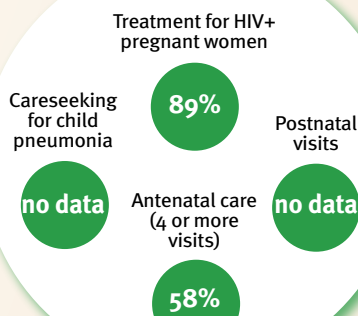
### Policies

	None	<14	14 - <18	18 - <26	≥26
Paid maternity leave (weeks)					
Paid paternity leave (weeks)					

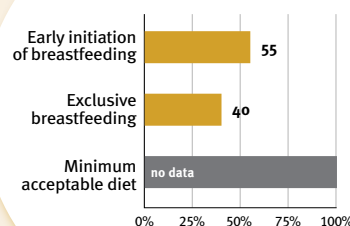
	Not	Slightly	Moderately	Substantially
International Code of Marketing of Breastmilk Substitutes (alignment)				

- ✓ National minimum wage
- ✓ Child and family social protection

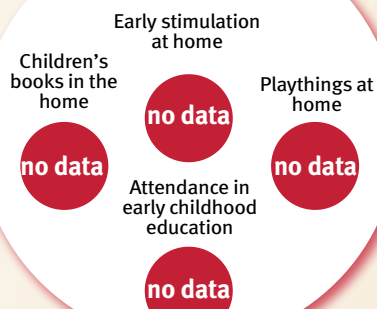
### Health



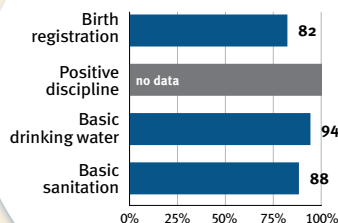
### Nutrition



### Early learning



### Security and safety



### Responsive caregiving

- Public information about ECD
- Parental mental health
- Parent support (groups, home visits)
- Quality child day care

Comparative country data urgently needed

### International conventions

- ✓ Convention on the Rights of the Child
- ✓ Convention on the Rights of Persons with Disabilities
- ✓ CRC Optional Protocol on the Sale of Children, Child Prostitution and Child Pornography
- ✓ Hague Convention on Protection of Children and Cooperation in Respect of Intercountry Adoption