



# Equatorial Guinea

Countdown to 2030

Women's, Children's & Adolescents' Health

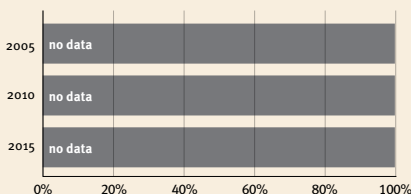
## Demographics

Population	1,402,985
Annual births	45,415
Children under 5	199,653 (14%)
Under-five mortality	82/1,000

## Threats to Early Childhood Development

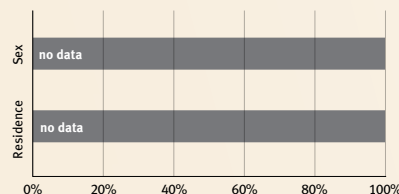
Maternal mortality	301/100,000	Young mothers (births by 18y)	42%
Low birthweight	no data	Preterm births	17%
Child poverty	no data	Under-five stunting	26%
Violent discipline	no data	Inadequate supervision	no data

## Young children at risk of poor development

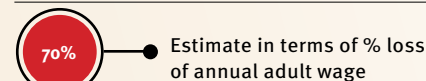


At risk in 2005, 2010 and 2015, using a composite indicator of under-five stunting or poverty

## Risk by sex and residence



## Lifetime cost of growth deficit in early childhood



## Children with functional difficulty



## Children developmentally on-track



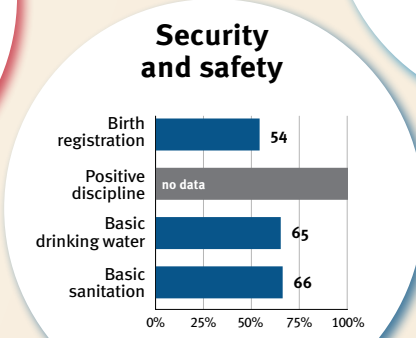
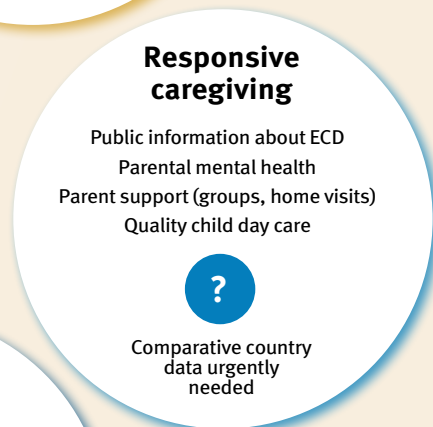
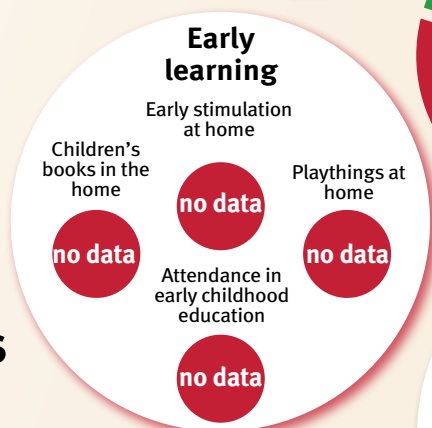
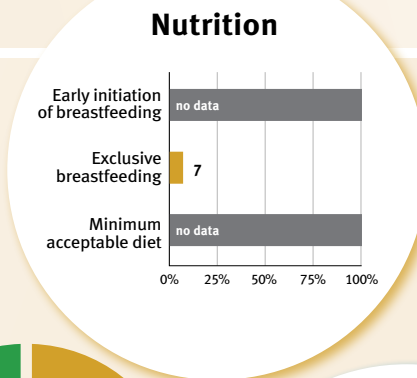
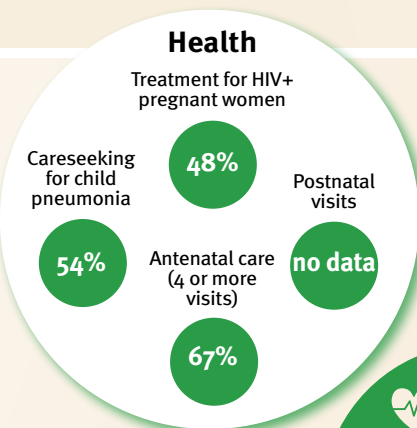
## Support and services for early childhood development: Nurturing care

Parents and caregivers need a facilitating environment of laws, policies, services and community support to assist them in providing their young children with nurturing care.

## Facilitating environments

Policies	None	<14	14 - <18	18 - <26	≥26
Paid maternity leave (weeks)					
Paid paternity leave (weeks)					

	Not	Slightly	Moderately	Substantially
International Code of Marketing of Breastmilk Substitutes (alignment)				
National minimum wage	✓			
Child and family social protection	✗			



### International conventions

✓	Convention on the Rights of the Child
✗	Convention on the Rights of Persons with Disabilities
✓	CRC Optional Protocol on the Sale of Children, Child Prostitution and Child Pornography
✗	Hague Convention on Protection of Children and Cooperation in Respect of Intercountry Adoption