



Montenegro

Countdown to 2030

Women's, Children's & Adolescents' Health

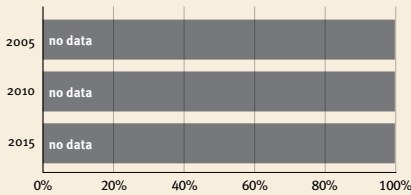
Demographics

| | |
|----------------------|-------------|
| Population | 628,062 |
| Annual births | 7,275 |
| Children under 5 | 36,906 (6%) |
| Under-five mortality | 2/1,000 |

Threats to Early Childhood Development

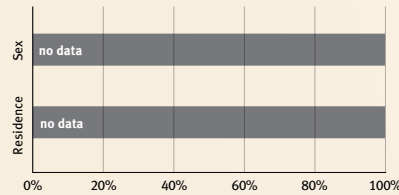
| | | | |
|--------------------|-----------|-------------------------------|----|
| Maternal mortality | 6/100,000 | Young mothers (births by 18y) | 3% |
| Low birthweight | 5% | Preterm births | 9% |
| Child poverty | no data | Under-five stunting | 9% |
| Violent discipline | 62% | Inadequate supervision | 5% |

Young children at risk of poor development



At risk in 2005, 2010 and 2015, using a composite indicator of under-five stunting or poverty

Risk by sex and residence



Lifetime cost of growth deficit in early childhood

no data Estimate in terms of % loss of annual adult wage

Children with functional difficulty

1%

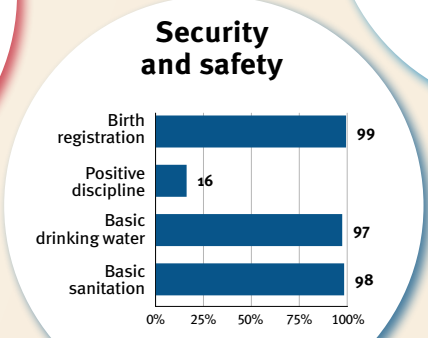
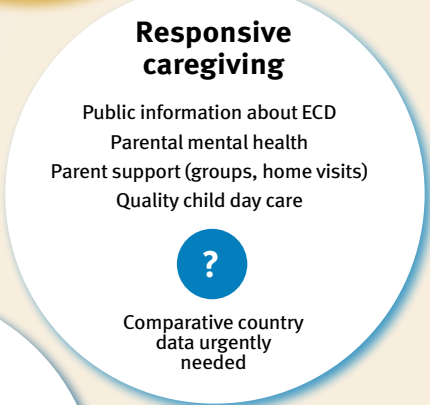
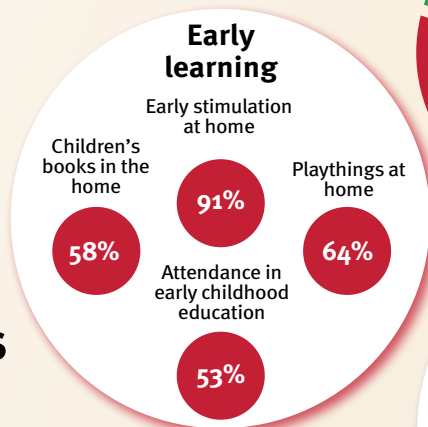
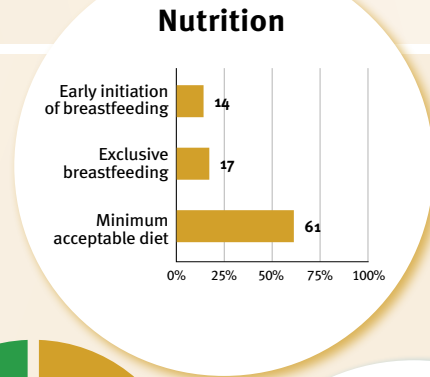
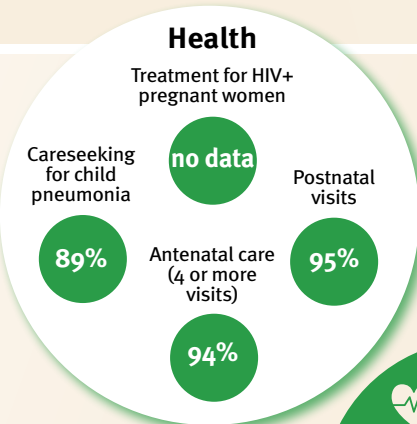
Children developmentally on-track

90%

Support and services for early childhood development: Nurturing care

Parents and caregivers need a facilitating environment of laws, policies, services and community support to assist them in providing their young children with nurturing care.

Facilitating environments



Policies

| | None | <14 | 14 - <18 | 18 - <26 | ≥26 |
|------------------------------|------|-----|----------|----------|-----|
| Paid maternity leave (weeks) | | | | | |
| Paid paternity leave (weeks) | | | | | |

International conventions

| | |
|---|--|
| ✓ | Convention on the Rights of the Child |
| ✓ | Convention on the Rights of Persons with Disabilities |
| ✓ | CRC Optional Protocol on the Sale of Children, Child Prostitution and Child Pornography |
| ✓ | Hague Convention on Protection of Children and Cooperation in Respect of Intercountry Adoption |

| | Not | Slightly | Moderately | Substantially |
|---|-----|----------|------------|---------------|
| International Code of Marketing of Breastmilk Substitutes (alignment) | | | | |
| National minimum wage | ✓ | | | |
| Child and family social protection | ✗ | | | |