



# Mozambique

Countdown to 2030

Women's, Children's & Adolescents' Health

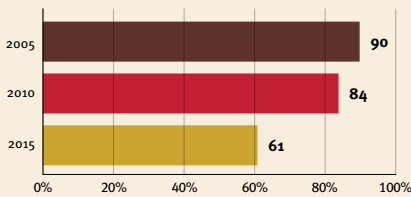
## Demographics

Population	31,255,435
Annual births	1,152,670
Children under 5	5,156,628 (16%)
Under-five mortality	74/1,000

## Threats to Early Childhood Development

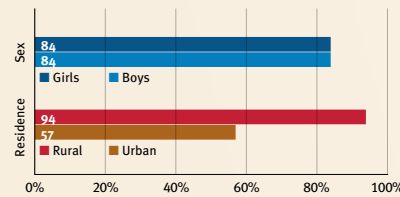
Maternal mortality	289/100,000	Young mothers (births by 18y)	40%
Low birthweight	14%	Preterm births	16%
Child poverty	82%	Under-five stunting	42%
Violent discipline	no data	Inadequate supervision	33%

## Young children at risk of poor development

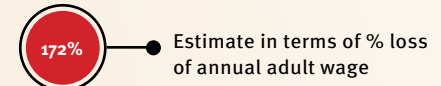


At risk in 2005, 2010 and 2015, using a composite indicator of under-five stunting or poverty

## Risk by sex and residence



## Lifetime cost of growth deficit in early childhood



## Children with functional difficulty

no data

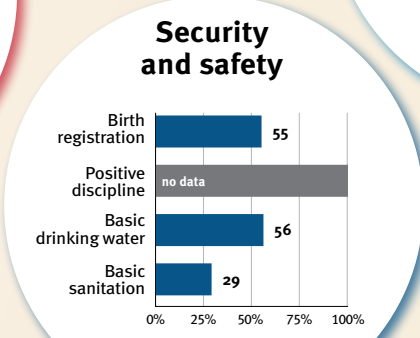
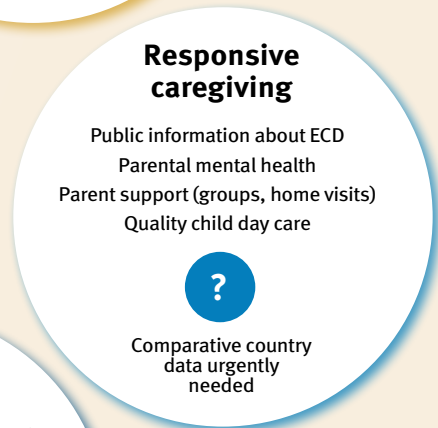
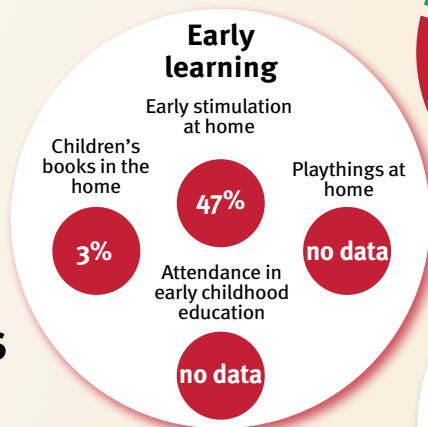
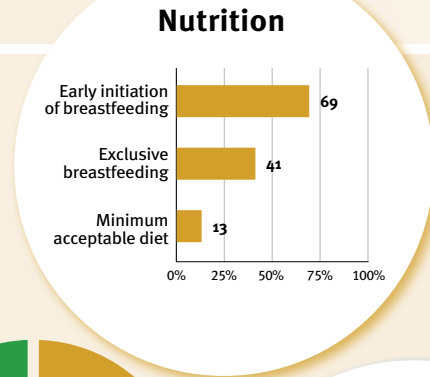
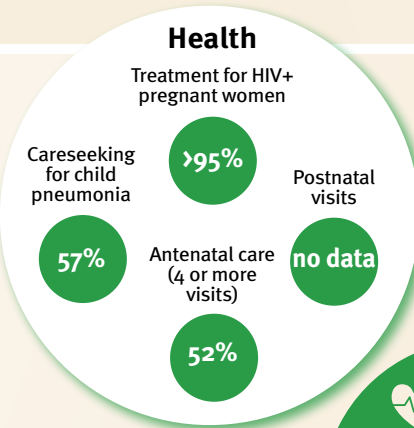
## Children developmentally on-track

no data

## Support and services for early childhood development: Nurturing care

Parents and caregivers need a facilitating environment of laws, policies, services and community support to assist them in providing their young children with nurturing care.

## Facilitating environments



### Policies

None	<14	14 - <18	18 - <26	≥26

Paid maternity leave (weeks)

None	<14	14 - <18	18 - <26	≥26

Paid paternity leave (weeks)

None	<14	14 - <18	18 - <26	≥26

Not	Slightly	Moderately	Substantially
✓			

## International conventions

✓	Convention on the Rights of the Child
✓	Convention on the Rights of Persons with Disabilities
✓	CRC Optional Protocol on the Sale of Children, Child Prostitution and Child Pornography
✗	Hague Convention on Protection of Children and Cooperation in Respect of Inter-country Adoption