



# Sao Tome and Principe

Countdown to 2030

Women's, Children's & Adolescents' Health

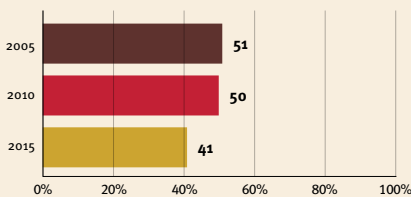
## Demographics

Population	219,161
Annual births	6,764
Children under 5	31,754 (14%)
Under-five mortality	30/1,000

## Threats to Early Childhood Development

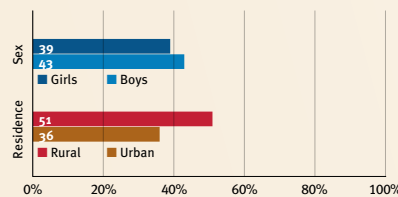
Maternal mortality	130/100,000	Young mothers (births by 18y)	27%
Low birthweight	7%	Preterm births	11%
Child poverty	29%	Under-five stunting	17%
Violent discipline	75%	Inadequate supervision	16%

## Young children at risk of poor development

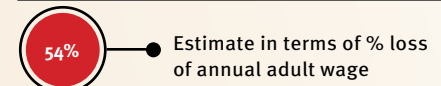


At risk in 2005, 2010 and 2015, using a composite indicator of under-five stunting or poverty

## Risk by sex and residence



## Lifetime cost of growth deficit in early childhood



## Children with functional difficulty

no data

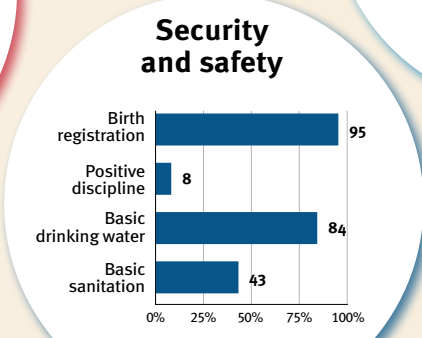
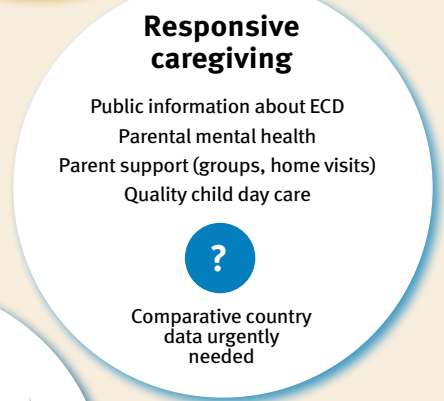
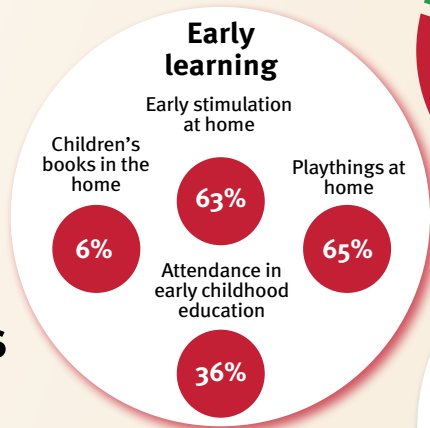
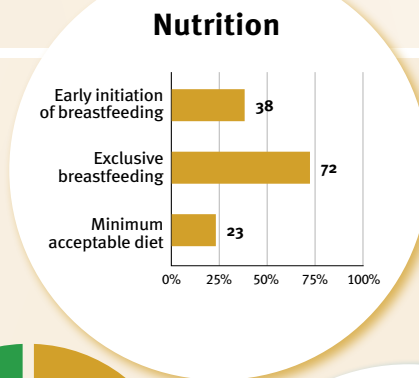
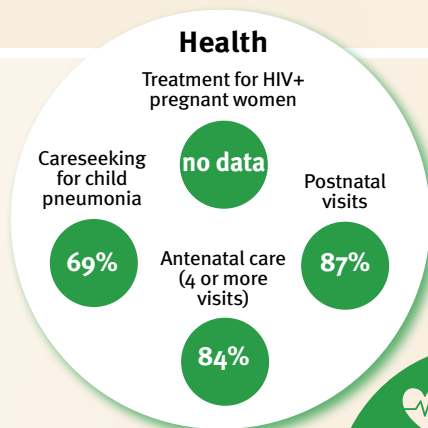
## Children developmentally on-track

55%

## Support and services for early childhood development: Nurturing care

Parents and caregivers need a facilitating environment of laws, policies, services and community support to assist them in providing their young children with nurturing care.

## Facilitating environments



Policies				
None	<14	14 - <18	18 - <26	≥26
Paid maternity leave (weeks)				
None	<14	14 - <18	18 - <26	≥26
Paid paternity leave (weeks)				
Not	Slightly	Moderately	Substantially	
International Code of Marketing of Breastmilk Substitutes (alignment)				
no data	National minimum wage			
X	Child and family social protection			

International conventions	
✓	Convention on the Rights of the Child
✓	Convention on the Rights of Persons with Disabilities
✓	CRC Optional Protocol on the Sale of Children, Child Prostitution and Child Pornography
X	Hague Convention on Protection of Children and Cooperation in Respect of Intercountry Adoption