



# Solomon Islands

Countdown to 2030

Women's, Children's & Adolescents' Health

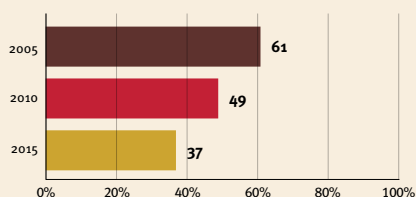
## Demographics

|                      |               |
|----------------------|---------------|
| Population           | 686,878       |
| Annual births        | 21,589        |
| Children under 5     | 103,156 (15%) |
| Under-five mortality | 20/1,000      |

## Threats to Early Childhood Development

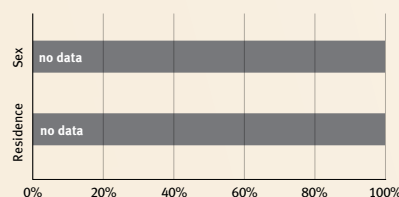
|                    |             |                               |         |
|--------------------|-------------|-------------------------------|---------|
| Maternal mortality | 104/100,000 | Young mothers (births by 18y) | 15%     |
| Low birthweight    | no data     | Preterm births                | 12%     |
| Child poverty      | no data     | Under-five stunting           | 32%     |
| Violent discipline | 85%         | Inadequate supervision        | no data |

## Young children at risk of poor development

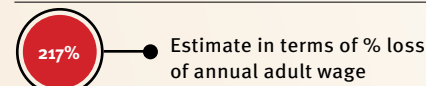


At risk in 2005, 2010 and 2015, using a composite indicator of under-five stunting or poverty

## Risk by sex and residence



## Lifetime cost of growth deficit in early childhood



## Children with functional difficulty



## Children developmentally on-track



## Support and services for early childhood development: Nurturing care

Parents and caregivers need a facilitating environment of laws, policies, services and community support to assist them in providing their young children with nurturing care.

## Facilitating environments

### Policies

|                              | None | <14 | 14 - <18 | 18 - <26 | ≥26 |
|------------------------------|------|-----|----------|----------|-----|
| Paid maternity leave (weeks) |      |     |          |          |     |
| Paid paternity leave (weeks) |      |     |          |          |     |

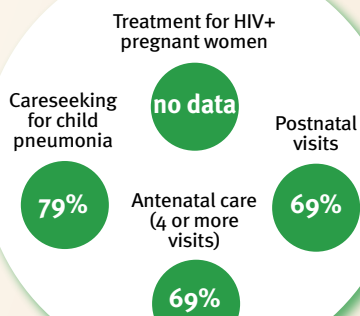
|   | Not | Slightly | Moderately | Substantially |
|---|-----|----------|------------|---------------|
| International Code of Marketing of Breastmilk Substitutes (alignment) |     |          |            |               |

|   |                                    |
|---|------------------------------------|
| ✓ | National minimum wage              |
| ✗ | Child and family social protection |

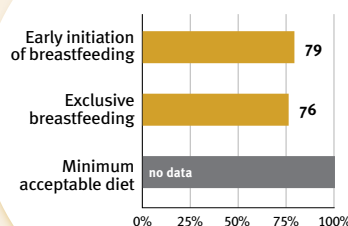
### International conventions

|   |  |
|---|--|
| ✓ | Convention on the Rights of the Child  |
| ✓ | Convention on the Rights of Persons with Disabilities  |
| ✓ | CRC Optional Protocol on the Sale of Children, Child Prostitution and Child Pornography        |
| ✗ | Hague Convention on Protection of Children and Cooperation in Respect of Intercountry Adoption |

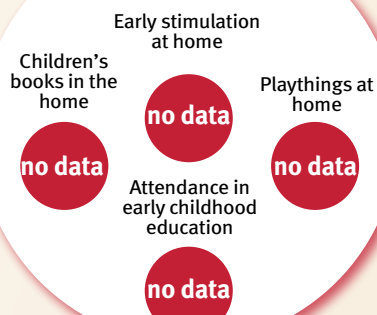
### Health



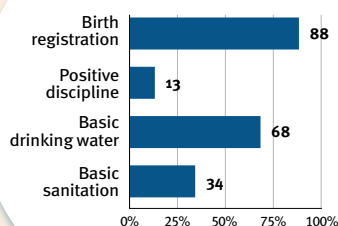
### Nutrition



### Early learning



### Security and safety



### Responsive caregiving

Public information about ECD  
Parental mental health  
Parent support (groups, home visits)  
Quality child day care



Comparative country data urgently needed