



## Tajikistan

Countdown to 2030

Women's, Children's & Adolescents' Health

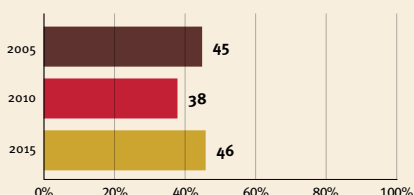
### Demographics

Population	9,537,642
Annual births	277,919
Children under 5	1,356,750 (14%)
Under-five mortality	34/1,000

### Threats to Early Childhood Development

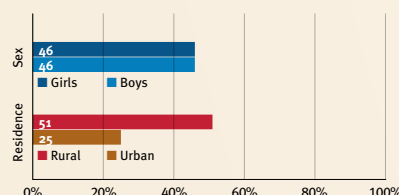
Maternal mortality	17/100,000	Young mothers (births by 18y)	1%
Low birthweight	6%	Preterm births	11%
Child poverty	29%	Under-five stunting	18%
Violent discipline	62%	Inadequate supervision	13%

### Young children at risk of poor development

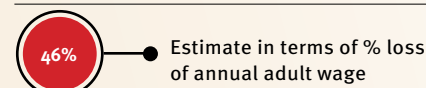


At risk in 2005, 2010 and 2015, using a composite indicator of under-five stunting or poverty

### Risk by sex and residence



### Lifetime cost of growth deficit in early childhood



### Children with functional difficulty

no data

### Children developmentally on-track

no data

## Support and services for early childhood development: Nurturing care

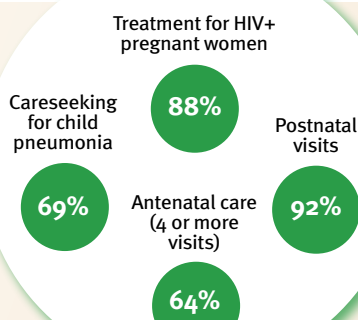
Parents and caregivers need a facilitating environment of laws, policies, services and community support to assist them in providing their young children with nurturing care.

## Facilitating environments

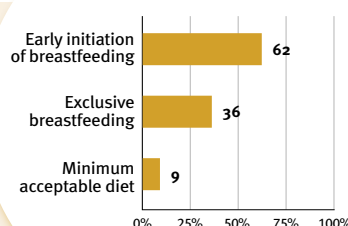
Policies				
None	<14	14 - <18	18 - <26	≥26
Paid maternity leave (weeks)				
Paid paternity leave (weeks)				

Not	Slightly	Moderately	Substantially
International Code of Marketing of Breastmilk Substitutes (alignment)			
X			
National minimum wage			
X			
Child and family social protection			

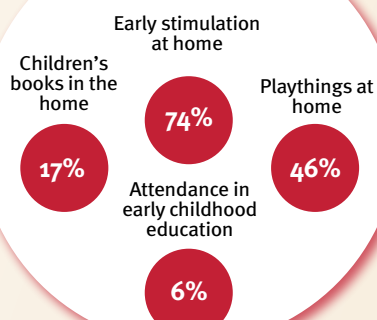
### Health



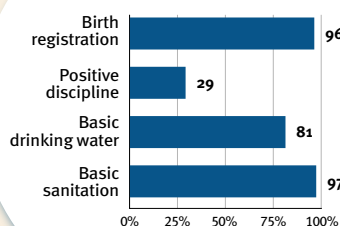
### Nutrition



### Early learning



### Security and safety



### Responsive caregiving

Public information about ECD  
Parental mental health  
Parent support (groups, home visits)  
Quality child day care

?

Comparative country data urgently needed

### International conventions

✓	Convention on the Rights of the Child
✓	Convention on the Rights of Persons with Disabilities
✓	CRC Optional Protocol on the Sale of Children, Child Prostitution and Child Pornography
X	Hague Convention on Protection of Children and Cooperation in Respect of Intercountry Adoption