



১০মুজিব বর্ষে স্বাস্থ্য খাত
এগিয়ে যাবে অনেক ধাপে

Regional multisectoral meeting to promote nurturing care for Early Childhood Development (ECD)

Early Childhood Care and Development in Bangladesh

27-29 April 2021

MoH&FW-DGHS



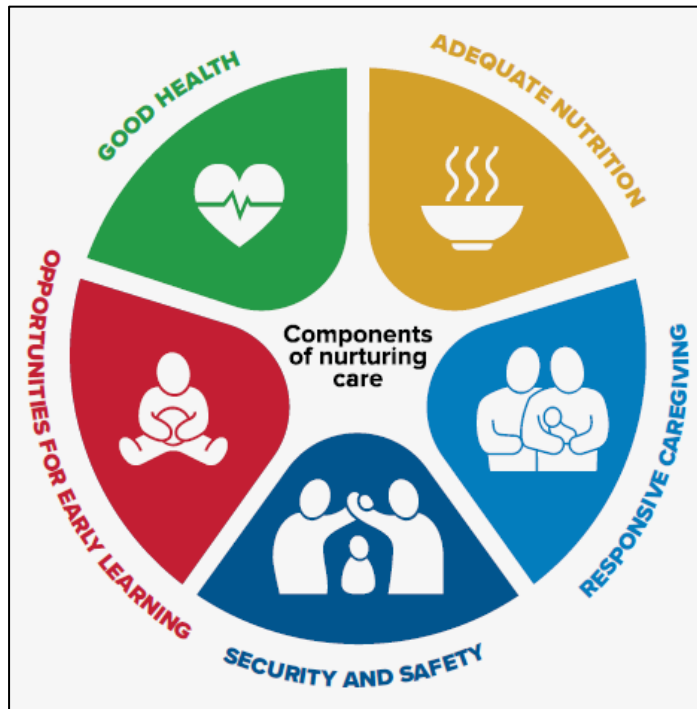
National
Nutrition
Services



unicef
for every child

World Health
Organization
Bangladesh

Overview of the national ECCD Policy and program in Bangladesh

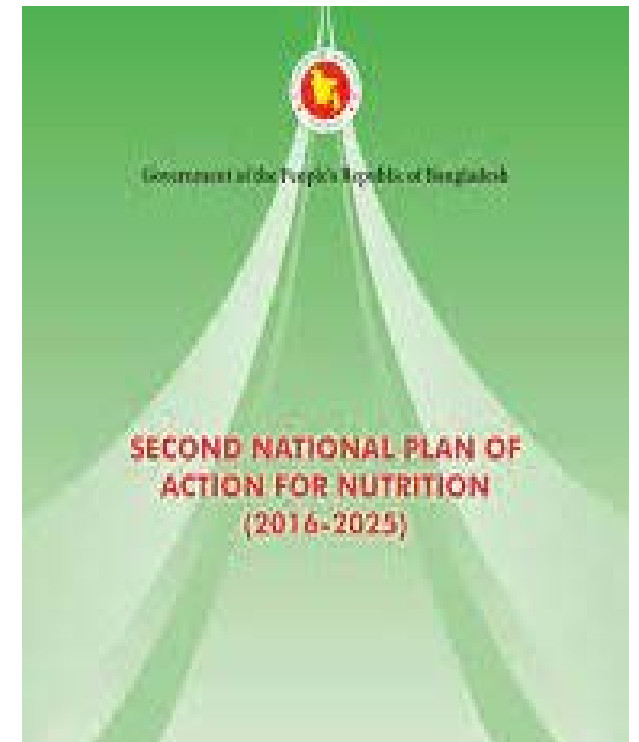


- ❑ The ECCD Policy 2013 established by the Government of Bangladesh.
- ❑ Ministry of Women and Children Affairs (MOWCA) plays overall coordination with 11 relevant ministries.
- ❑ Other ECD related guidelines and programmes include
 - Early Learning & Development Standards (ELDS)
 - Guideline on collaboration for universal Pre-Primary Education (PPE) in Bangladesh between government and NGOs.
 - The **Child Daycare Centre Act 2020** was approved in principle at the regular cabinet meeting led by Prime Minister Sheikh Hasina.
- ❑ **Key ECCD Stakeholders:** MoWCA, Min. of Primary and Mass Education, MOHFW, Min. of CHT, Min. of Social Welfare, Bangladesh Sishu Academy, ICMH, NIPORT, CSOs/NGOs.

GAP: Integrated ECCD programme for 0-3 yrs old

ECCD in the Policies and Action Plans of Ministry of Health and Family Welfare

1. The 8th Five-year plan of GoB (2021-2025) includes the focus on Early Childhood development and nutrition services
2. National Nutrition Policy 2015
 - Multi-sectoral policy for nutrition specific and nutrition sensitive interventions for nutrition outcomes
 - Defined nutrition interventions during early childhood
 - Other sectors involved: Agriculture; Food; Fisheries and Livestock; Women and Children Affairs; Local Government, Rural Development and Cooperatives; Education; Information; Planning; Disaster Management & Relief; Primary and Mass Education; Social Welfare; Finance
3. The 2nd National Plan of Action for Nutrition (2016-2025):
 - Life-cycle approach in ensuring adequate nutrition for all Bangladeshis, focus on 1000-day window of opportunity, from conception to 2 yrs of age
 - National nutrition coordination is with the Bangladesh National Nutrition Council (BNNC)





ECCD in the Operational Plans of the 4th HNPSP (2017-2022)

- ❑ National Nutrition Services Operational Plan (2017-2023)
- ❑ Maternal, Newborn, Child and adolescent health Operational Plan
- ❑ National Newborn Health Program focuses on strengthening immediate and essential newborn care, sick newborn management and kangaroo Mother care contributing to nurturing care

Few examples of current initiatives:

- ❖ **Paracenters in CHT:** platform for Nutrition, Health, ECD interventions (early learning, responsive caregiving) reaching 206,000 families; 40000 children underfive
- ❖ **Integrated ECCD, Nutrition, Health and Education in Cox's Bazaar** among 6000 children
- ❖ **Workplace platform** in selected RMG sector under Nutrition programme to strengthen maternity rights and breastfeeding support (Mothers@Work programme), reaching around 20,000 female workers and 1000 children underfive





Opportunities to strengthen integrated ECCD with Nurturing Care

- ❑ Develop strategy and demonstrating a scalable model for a holistic integrated ECCD with focus for 0-3 yrs within MoHFW and interlink and coordination with other ministries i.e. MoWCA, MoLE, MoPME
- ❑ Strengthening the PHC platform with improved service delivery for IMCI and nutrition services
- ❑ Develop comprehensive guidelines, modules, tools and package for integrated ECCD, i.e. Responsive caregiving, parenting
- ❑ Use existing other platforms of health and nutrition services and the linkage with community-based and workplace (i.e. community clinic, community-based day care, RMG, Tea Garden etc)



Thank You