

INDONESIA

INTEGRATING HEALTH, NUTRITION, AND RESPONSIVE CARE AT POSYANDU

HOLISTIC-INTEGRATIVE EARLY CHILDHOOD DEVELOPMENT



Presidential Decree

Commitment to ensure
the fulfilment of the
rights of early
childhood development



Holistic management of early childhood

Nutrition and health

Education and
Parenting

Protection

Community

Local Government

Central Government

CONTINUUM OF CARE

Promotive,
Preventive,
Early Detection,
Curative and
Rehabilitative

LIFE CYCLE
APPROACH

Community

Primary Health Centre

Hospital



Community
Empowerment

Primary Health Care

Promotive
Preventive
Early Detection
Curative
Rehabilitative

Multisectoral
Engagement



POSYANDU

Integrated Service Post

A community-based Health Efforts which operate by community, utilize their own resources to empower the community itself and provide essential MCH services

Operational Working Group



Develop
and
manage by
community



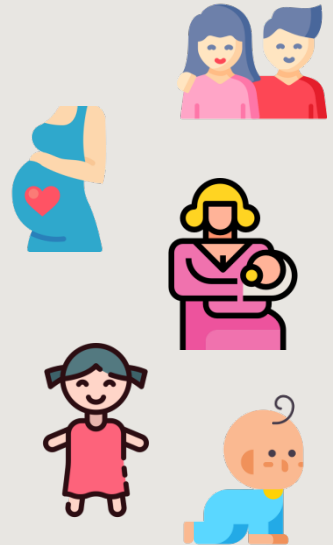
Establishment of
administrator

Cadre selection

Capacity building

Management

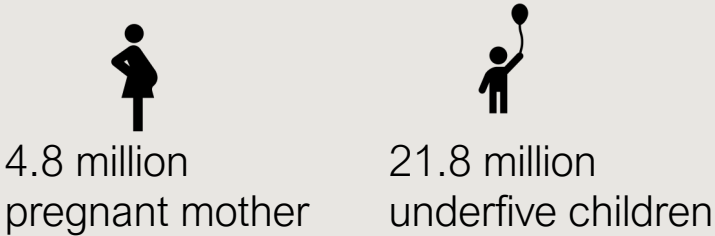
Monitoring and
evaluation



THE POTENTIAL OF POSYANDU



Total Population of 273 million
(2020)

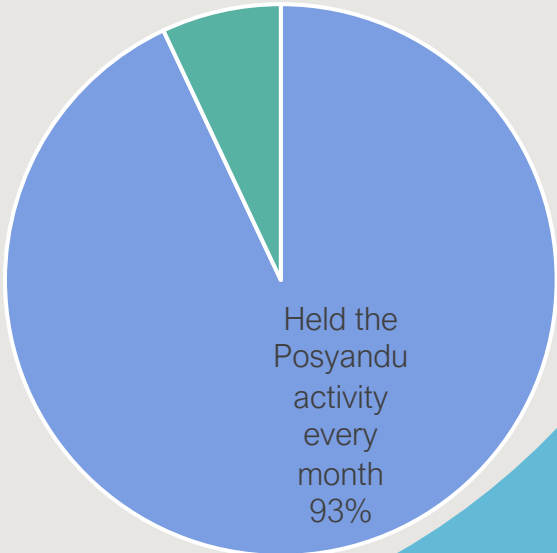


34	Provinces
514	Districts
7,232	Sub Districts
83,931	Villages



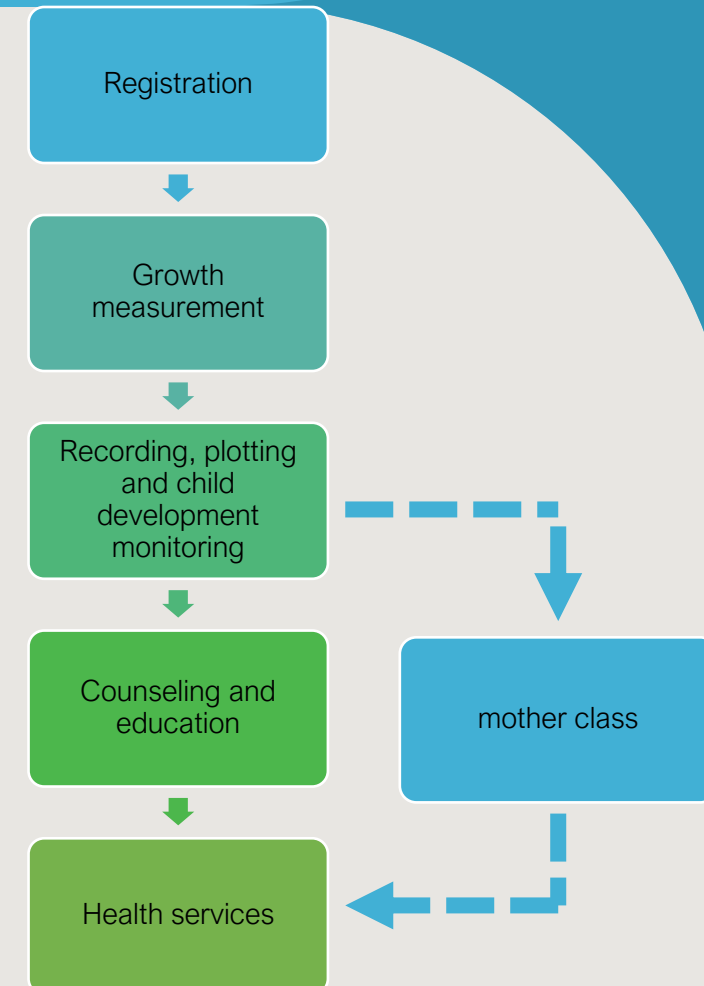
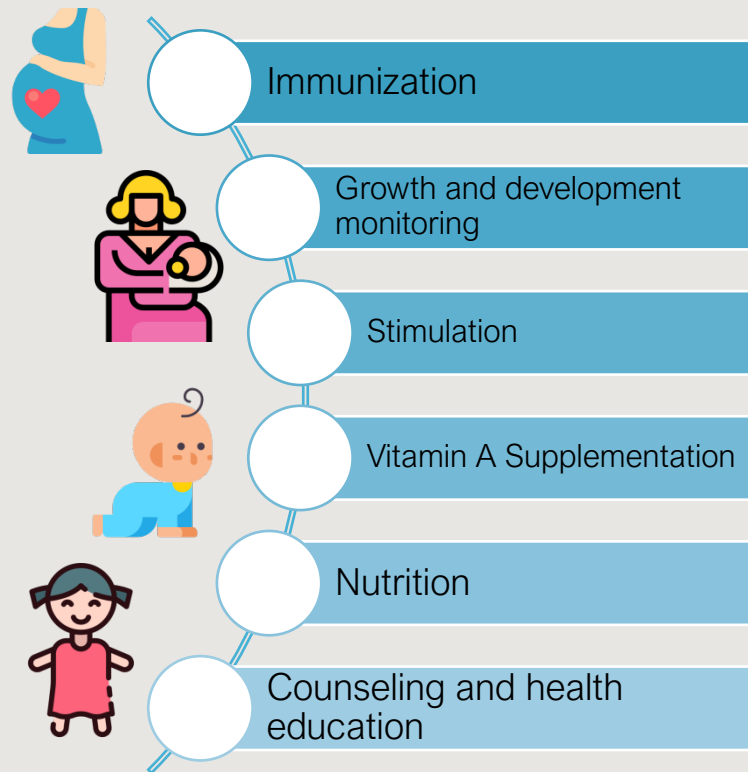
2019 296.777 Posyandu

Village by Posyandu Activity



Village Potential Statistics of Indonesia, 2018

INTEGRATED CHILD CARE IN POSYANDU



CHALLENGES

Service provider's capacity

Integrating health care in other child services

Service instrument, recording, and reporting

Delivering childcare during COVID-19 Pandemic

NEXT STEP

1

- Strengthen cross sectoral collaboration

2

- Facilitate the ECD implementation

3

- Harmonization of ECD interventions

4

- Expand the community engagement

THANK YOU



<https://kesga.kemkes.go.id>
<https://belajarkesga.kemkes.go.id>

