



Antigua and Barbuda

Countdown to 2030

Women's, Children's & Adolescents' Health

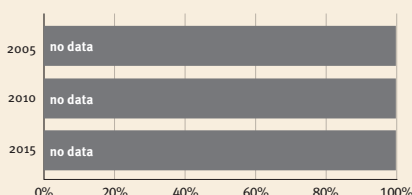
Demographics

Population	98,728
Annual births	1,445
Children under 5	7,293 (7%)
Under-five mortality	7/1,000

Threats to Early Childhood Development

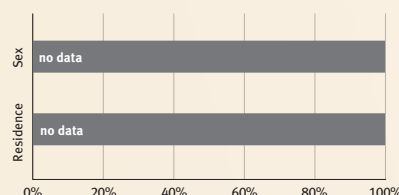
Maternal mortality	42/100,000	Adolescent birth rate	28/1,000
Low birthweight	9%	Preterm births	6%
Child poverty	no data	Under-five stunting	no data
Violent discipline	no data	Inadequate supervision	no data

Young children at risk of poor development



At risk in 2005, 2010 and 2015, using a composite indicator of under-five stunting or poverty

Risk by sex and residence



Lifetime cost of growth deficit in early childhood

no data — Estimate in terms of % loss of annual adult wage

Children with functional difficulty

no data

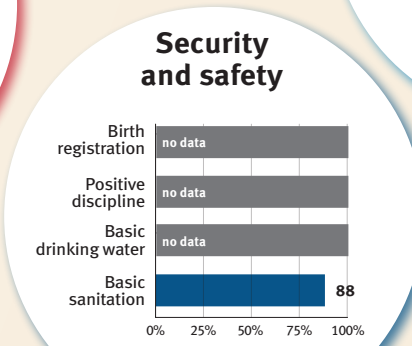
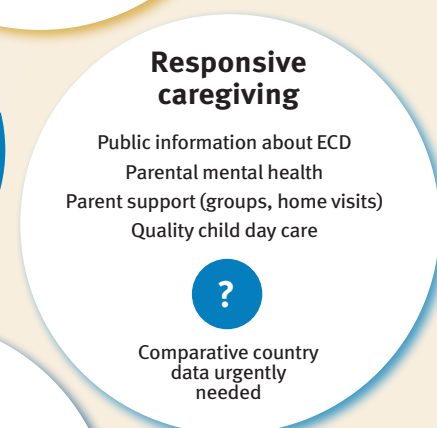
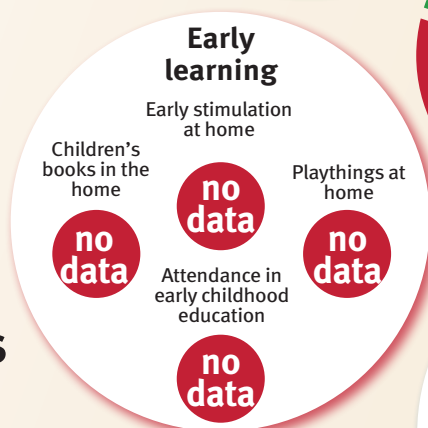
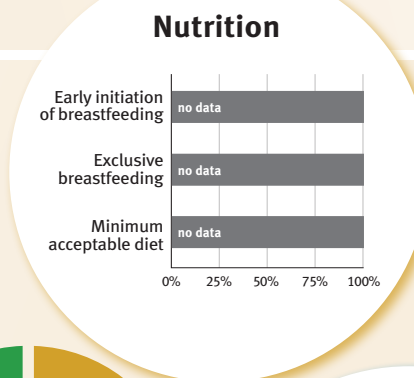
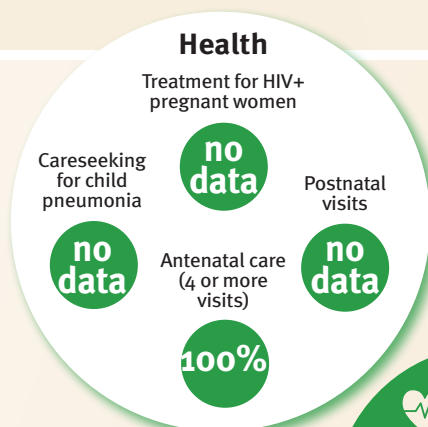
Children developmentally on-track

no data

Support and services for early childhood development: Nurturing care

Parents and caregivers need a facilitating environment of laws, policies, services and community support to assist them in providing their young children with nurturing care.

Facilitating environments



Policies				
None	<14	14 - <18	18 - <26	≥26
Paid maternity leave (weeks)				
None	<14	14 - <18	18 - <26	≥26
Paid paternity leave (weeks)				
Not	Slightly	Moderately	Substantially	
International Code of Marketing of Breastmilk Substitutes (alignment)				
✓	National minimum wage			
✗	Child and family social protection			

International conventions	
✓	Convention on the Rights of the Child
✓	Convention on the Rights of Persons with Disabilities
✓	CRC Optional Protocol on the Sale of Children, Child Prostitution and Child Pornography
✗	Hague Convention on Protection of Children and Cooperation in Respect of Intercountry Adoption