



## Belize

## Countdown to 2030

Women's, Children's & Adolescents' Health

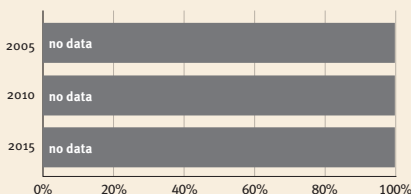
### Demographics

Population	404,915
Annual births	8,101
Children under 5	39,549 (10%)
Under-five mortality	12/1,000

### Threats to Early Childhood Development

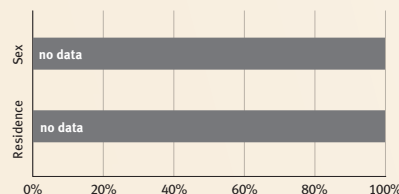
Maternal mortality	36/100,000	Adolescent birth rate	58/1,000
Low birthweight	9%	Preterm births	10%
Child poverty	no data	Under-five stunting	13%
Violent discipline	63%	Inadequate supervision	13%

### Young children at risk of poor development

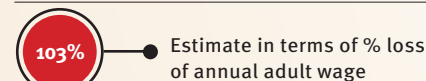


At risk in 2005, 2010 and 2015, using a composite indicator of under-five stunting or poverty

### Risk by sex and residence



### Lifetime cost of growth deficit in early childhood



### Children with functional difficulty



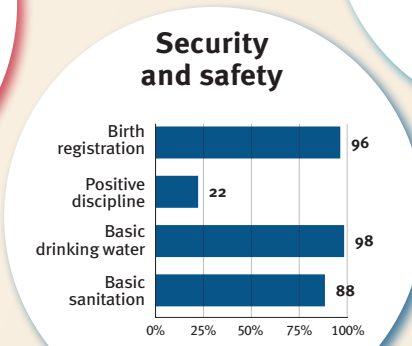
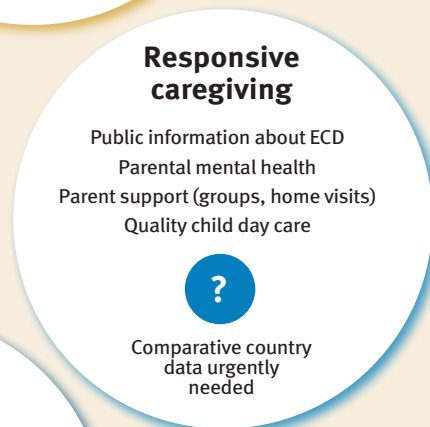
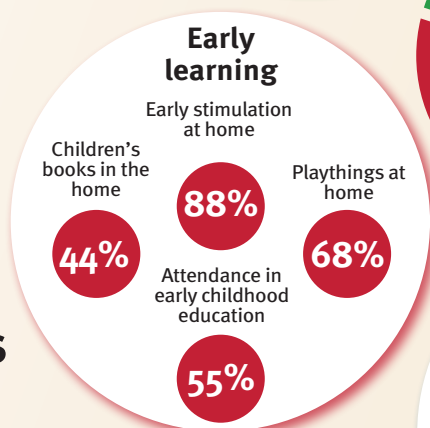
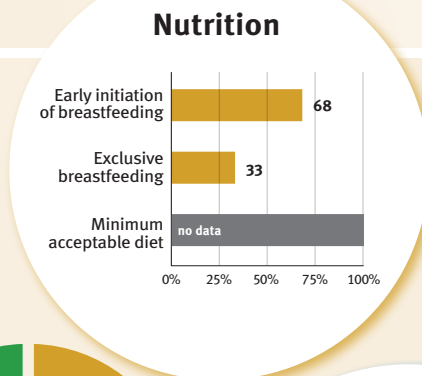
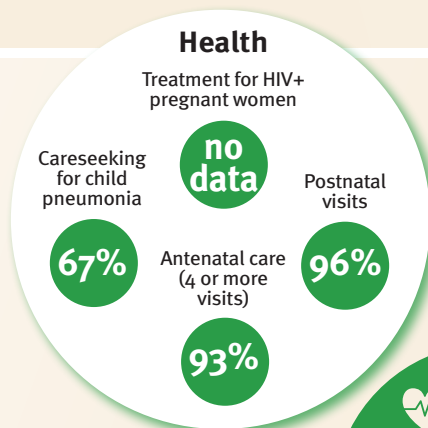
### Children developmentally on-track



## Support and services for early childhood development: Nurturing care

Parents and caregivers need a facilitating environment of laws, policies, services and community support to assist them in providing their young children with nurturing care.

## Facilitating environments



### Policies

	None	<14	14 - <18	18 - <26	≥26
Paid maternity leave (weeks)					
Paid paternity leave (weeks)					

	Not	Slightly	Moderately	Substantially
International Code of Marketing of Breastmilk Substitutes (alignment)				
National minimum wage	✓			
Child and family social protection	✗			

### International conventions

✓	Convention on the Rights of the Child
✓	Convention on the Rights of Persons with Disabilities
✓	CRC Optional Protocol on the Sale of Children, Child Prostitution and Child Pornography
✓	Hague Convention on Protection of Children and Cooperation in Respect of Intercountry Adoption