



## Chad

## Countdown to 2030

Women's, Children's & Adolescents' Health

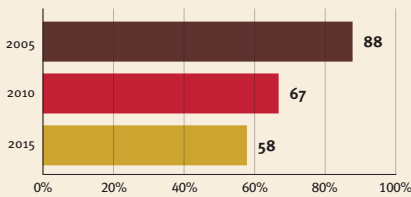
### Demographics

|                      |                 |
|----------------------|-----------------|
| Population           | 16,914,985      |
| Annual births        | 689,153         |
| Children under 5     | 2,995,318 (18%) |
| Under-five mortality | 114/1,000       |

### Threats to Early Childhood Development

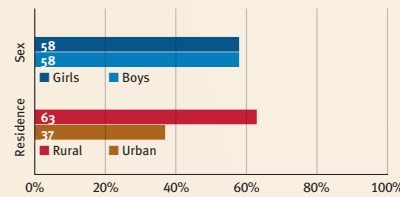
|                    |              |                        |           |
|--------------------|--------------|------------------------|-----------|
| Maternal mortality | 1140/100,000 | Adolescent birth rate  | 179/1,000 |
| Low birthweight    | no data      | Preterm births         | 13%       |
| Child poverty      | 48%          | Under-five stunting    | 35%       |
| Violent discipline | 79%          | Inadequate supervision | 64%       |

### Young children at risk of poor development

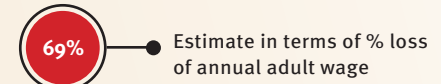


At risk in 2005, 2010 and 2015, using a composite indicator of under-five stunting or poverty

### Risk by sex and residence



### Lifetime cost of growth deficit in early childhood



### Children with functional difficulty



### Children developmentally on-track



## Support and services for early childhood development: Nurturing care

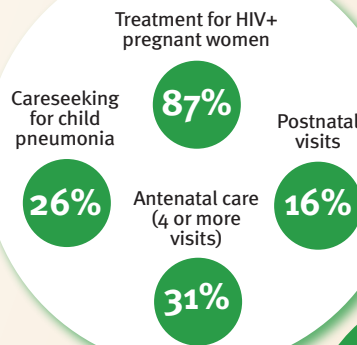
Parents and caregivers need a facilitating environment of laws, policies, services and community support to assist them in providing their young children with nurturing care.

## Facilitating environments

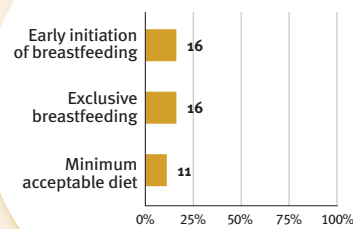
| Policies                     |          |            |               |     |
|------------------------------|----------|------------|---------------|-----|
| None                         | <14      | 14 - <18   | 18 - <26      | ≥26 |
|                              |          |            |               |     |
| Paid maternity leave (weeks) |          |            |               |     |
| None                         | <14      | 14 - <18   | 18 - <26      | ≥26 |
| Paid paternity leave (weeks) |          |            |               |     |
| Not                          | Slightly | Moderately | Substantially |     |

|   |                                    |
|---|------------------------------------|
| ✓ | National minimum wage              |
| ✗ | Child and family social protection |

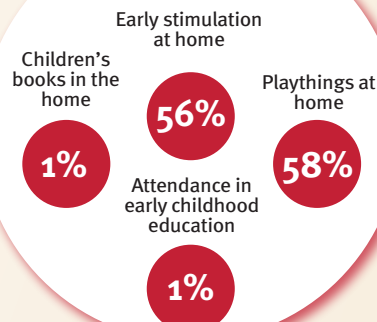
### Health



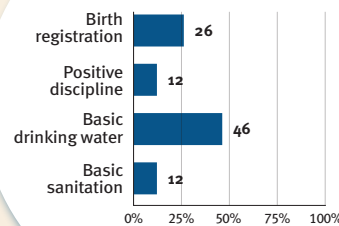
### Nutrition



### Early learning



### Security and safety



### Responsive caregiving

Public information about ECD  
Parental mental health  
Parent support (groups, home visits)  
Quality child day care



Comparative country data urgently needed

### International conventions

|   |  |
|---|--|
| ✓ | Convention on the Rights of the Child  |
| ✓ | Convention on the Rights of Persons with Disabilities  |
| ✓ | CRC Optional Protocol on the Sale of Children, Child Prostitution and Child Pornography        |
| ✗ | Hague Convention on Protection of Children and Cooperation in Respect of Intercountry Adoption |