



## Czechia

Countdown to 2030

Women's, Children's & Adolescents' Health

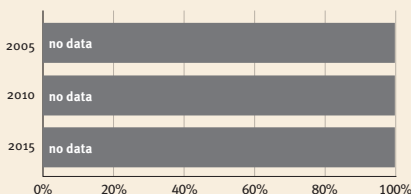
### Demographics

|                      |              |
|----------------------|--------------|
| Population           | 10,724,553   |
| Annual births        | 106,829      |
| Children under 5     | 566,254 (5%) |
| Under-five mortality | 3/1,000      |

### Threats to Early Childhood Development

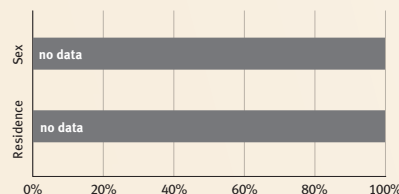
|                    |           |                        |          |
|--------------------|-----------|------------------------|----------|
| Maternal mortality | 3/100,000 | Adolescent birth rate  | 11/1,000 |
| Low birthweight    | 8%        | Preterm births         | 7%       |
| Child poverty      | no data   | Under-five stunting    | 3%       |
| Violent discipline | no data   | Inadequate supervision | no data  |

### Young children at risk of poor development



At risk in 2005, 2010 and 2015, using a composite indicator of under-five stunting or poverty

### Risk by sex and residence



### Lifetime cost of growth deficit in early childhood

no data — Estimate in terms of % loss of annual adult wage

### Children with functional difficulty

no data

### Children developmentally on-track

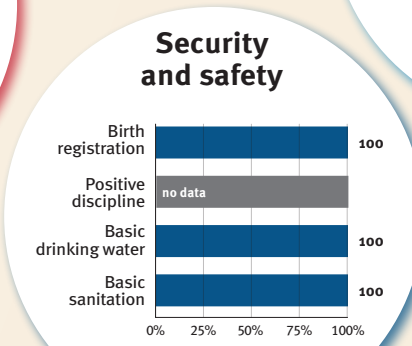
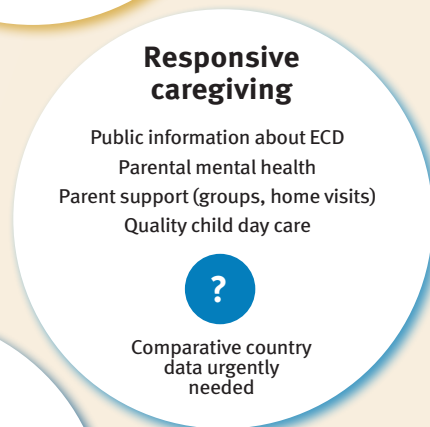
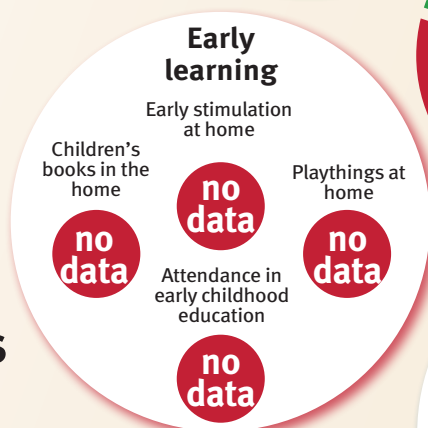
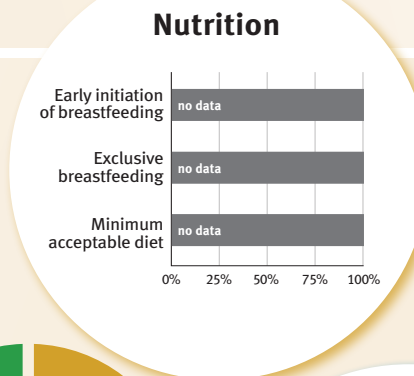
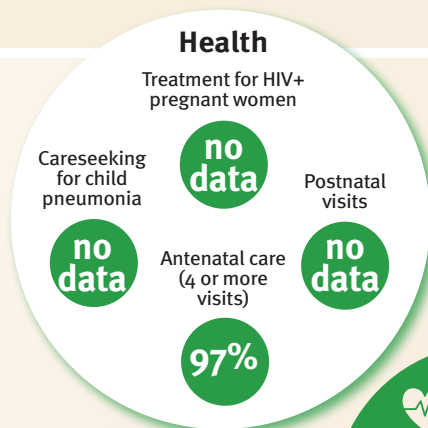
no data

## Support and services for early childhood development: Nurturing care

Parents and caregivers need a facilitating environment of laws, policies, services and community support to assist them in providing their young children with nurturing care.

## Facilitating environments

| Policies  |                                    |            |               |     |
|---|------------------------------------|------------|---------------|-----|
| None  | <14                                | 14 – <18   | 18 – <26      | ≥26 |
| Paid maternity leave (weeks)  |                                    |            |               |     |
| None  | <14                                | 14 – <18   | 18 – <26      | ≥26 |
| Paid paternity leave (weeks)  |                                    |            |               |     |
| Not   | Slightly                           | Moderately | Substantially |     |
| International Code of Marketing of Breastmilk Substitutes (alignment) |                                    |            |               |     |
| ✓   | National minimum wage              |            |               |     |
| ✓   | Child and family social protection |            |               |     |



### International conventions

- ✓ Convention on the Rights of the Child
- ✓ Convention on the Rights of Persons with Disabilities
- ✓ CRC Optional Protocol on the Sale of Children, Child Prostitution and Child Pornography
- ✓ Hague Convention on Protection of Children and Cooperation in Respect of Intercountry Adoption