



Dominican Republic

Countdown to 2030

Women's, Children's & Adolescents' Health

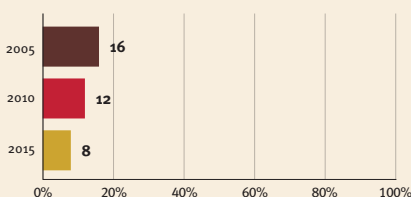
Demographics

Population	10,953,714
Annual births	202,734
Children under 5	999,087 (9%)
Under-five mortality	28/1,000

Threats to Early Childhood Development

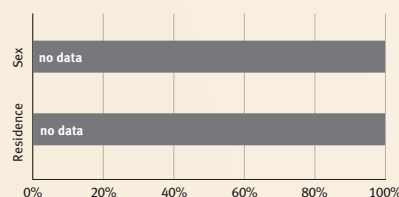
Maternal mortality	95/100,000	Adolescent birth rate	53/1,000
Low birthweight	11%	Preterm births	11%
Child poverty	2%	Under-five stunting	6%
Violent discipline	62%	Inadequate supervision	5%

Young children at risk of poor development

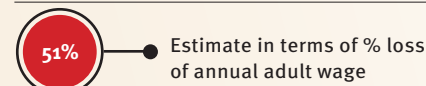


At risk in 2005, 2010 and 2015, using a composite indicator of under-five stunting or poverty

Risk by sex and residence



Lifetime cost of growth deficit in early childhood



Children with functional difficulty



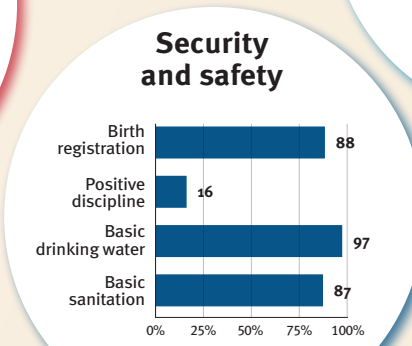
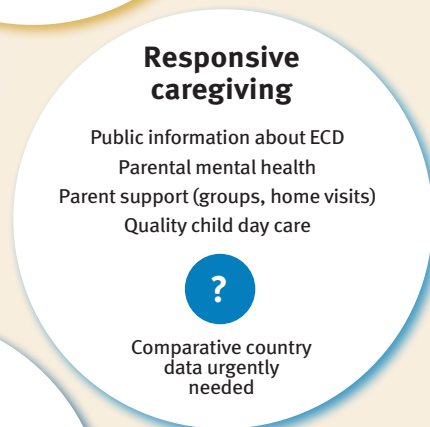
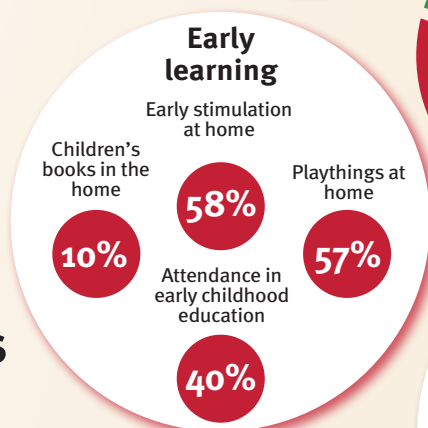
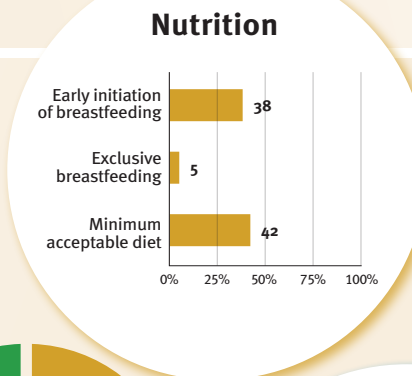
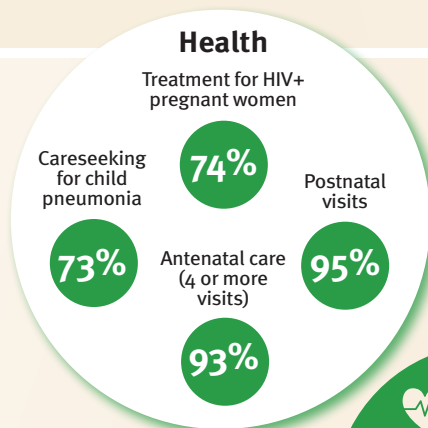
Children developmentally on-track



Support and services for early childhood development: Nurturing care

Parents and caregivers need a facilitating environment of laws, policies, services and community support to assist them in providing their young children with nurturing care.

Facilitating environments



Policies				
None	<14	14 - <18	18 - <26	≥26
Paid maternity leave (weeks)				
None	<14	14 - <18	18 - <26	≥26
Paid paternity leave (weeks)				
None	<14	14 - <18	18 - <26	≥26

Not	Slightly	Moderately	Substantially
International Code of Marketing of Breastmilk Substitutes (alignment)			
✓			
National minimum wage			
✓			
Child and family social protection			
✓			

International conventions	
✓	Convention on the Rights of the Child
✓	Convention on the Rights of Persons with Disabilities
✓	CRC Optional Protocol on the Sale of Children, Child Prostitution and Child Pornography
✓	Hague Convention on Protection of Children and Cooperation in Respect of Intercountry Adoption