



Grenada

Countdown to 2030

Women's, Children's & Adolescents' Health

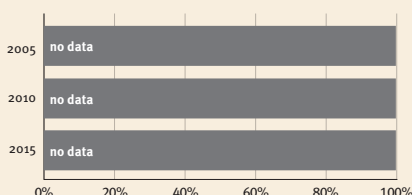
Demographics

Population	113,015
Annual births	1,759
Children under 5	8,923 (8%)
Under-five mortality	17/1,000

Threats to Early Childhood Development

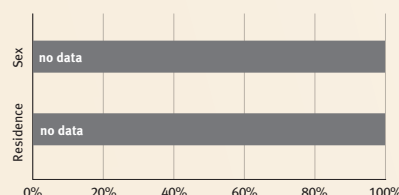
Maternal mortality	25/100,000	Adolescent birth rate	36/1,000
Low birthweight	no data	Preterm births	10%
Child poverty	no data	Under-five stunting	no data
Violent discipline	no data	Inadequate supervision	no data

Young children at risk of poor development

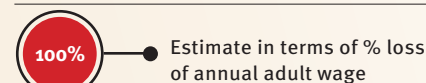


At risk in 2005, 2010 and 2015, using a composite indicator of under-five stunting or poverty

Risk by sex and residence



Lifetime cost of growth deficit in early childhood



Children with functional difficulty



Children developmentally on-track



Support and services for early childhood development: Nurturing care

Parents and caregivers need a facilitating environment of laws, policies, services and community support to assist them in providing their young children with nurturing care.

Facilitating environments

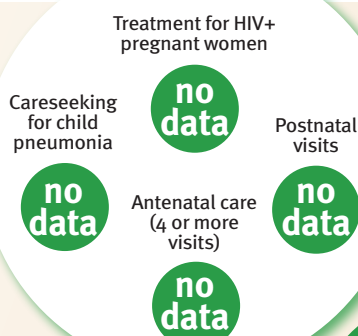
Policies

None	<14	14 - <18	18 - <26	≥26
None	<14	14 - <18	18 - <26	≥26
Paid maternity leave (weeks)				
None	<14	14 - <18	18 - <26	≥26
Paid paternity leave (weeks)				

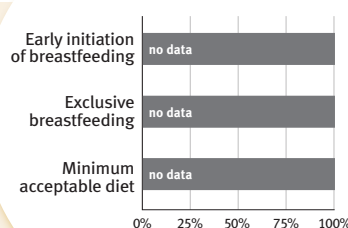
Not	Slightly	Moderately	Substantially
Not	Slightly	Moderately	Substantially
International Code of Marketing of Breastmilk Substitutes (alignment)			

✓	National minimum wage
✗	Child and family social protection

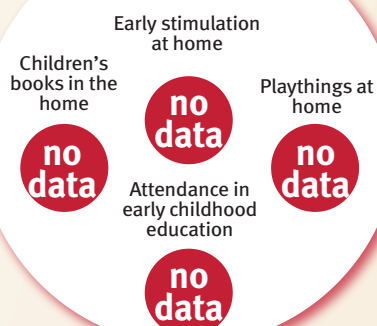
Health



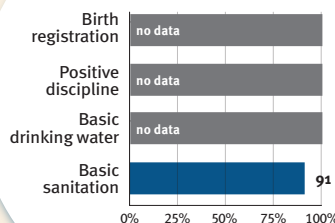
Nutrition



Early learning



Security and safety



Responsive caregiving

Public information about ECD
Parental mental health
Parent support (groups, home visits)
Quality child day care



Comparative country data urgently needed

International conventions

✓	Convention on the Rights of the Child
✓	Convention on the Rights of Persons with Disabilities
✓	CRC Optional Protocol on the Sale of Children, Child Prostitution and Child Pornography
✗	Hague Convention on Protection of Children and Cooperation in Respect of Intercountry Adoption