



## Honduras

Countdown to 2030

Women's, Children's & Adolescents' Health

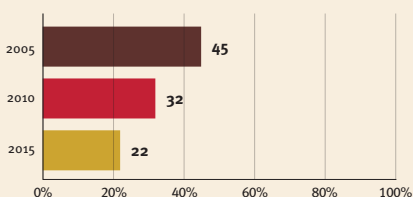
### Demographics

Population	10,062,994
Annual births	209,083
Children under 5	1,028,839 (10%)
Under-five mortality	17/1,000

### Threats to Early Childhood Development

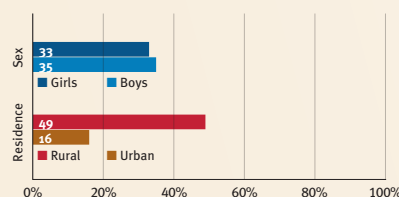
Maternal mortality	65/100,000	Adolescent birth rate	89/1,000
Low birthweight	11%	Preterm births	12%
Child poverty	20%	Under-five stunting	20%
Violent discipline	no data	Inadequate supervision	4%

### Young children at risk of poor development

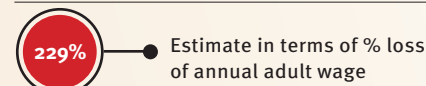


At risk in 2005, 2010 and 2015, using a composite indicator of under-five stunting or poverty

### Risk by sex and residence



### Lifetime cost of growth deficit in early childhood



### Children with functional difficulty

no data

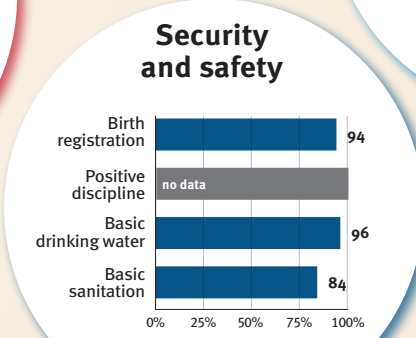
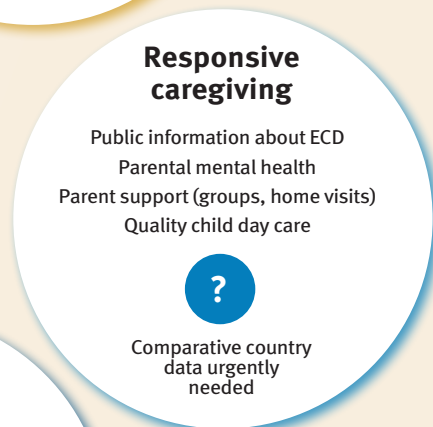
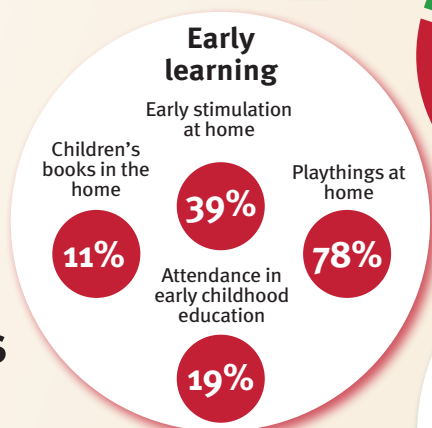
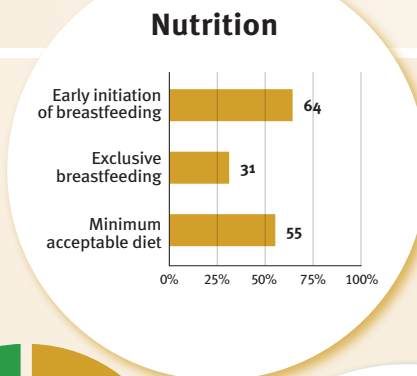
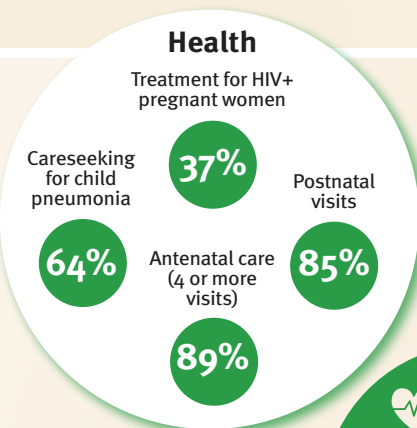
### Children developmentally on-track

65%

## Support and services for early childhood development: Nurturing care

Parents and caregivers need a facilitating environment of laws, policies, services and community support to assist them in providing their young children with nurturing care.

## Facilitating environments



Policies	None	<14	14 - <18	18 - <26	≥26
Paid maternity leave (weeks)					
Paid paternity leave (weeks)					

	Not	Slightly	Moderately	Substantially
International Code of Marketing of Breastmilk Substitutes (alignment)				
National minimum wage	✓			
Child and family social protection	✓			

International conventions	
Convention on the Rights of the Child	✓
Convention on the Rights of Persons with Disabilities	✓
CRC Optional Protocol on the Sale of Children, Child Prostitution and Child Pornography	✓
Hague Convention on Protection of Children and Cooperation in Respect of Intercountry Adoption	✓