



## Niger

## Countdown to 2030

Women's, Children's & Adolescents' Health

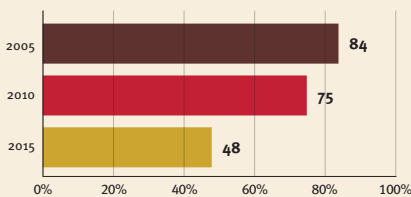
### Demographics

Population	25,130,810
Annual births	1,129,776
Children under 5	4,940,603 (20%)
Under-five mortality	80/1,000

### Threats to Early Childhood Development

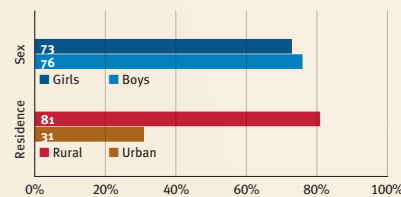
Maternal mortality	509/100,000	Adolescent birth rate	154/1,000
Low birthweight	no data	Preterm births	9%
Child poverty	57%	Under-five stunting	47%
Violent discipline	80%	Inadequate supervision	no data

### Young children at risk of poor development

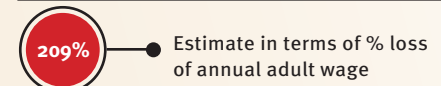


At risk in 2005, 2010 and 2015, using a composite indicator of under-five stunting or poverty

### Risk by sex and residence



### Lifetime cost of growth deficit in early childhood



### Children with functional difficulty

no data

### Children developmentally on-track

no data

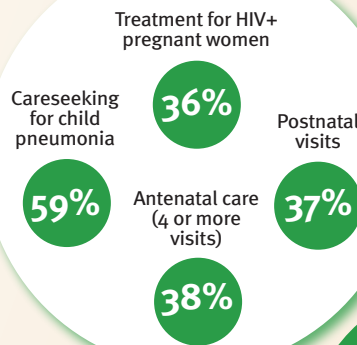
## Support and services for early childhood development: Nurturing care

Parents and caregivers need a facilitating environment of laws, policies, services and community support to assist them in providing their young children with nurturing care.

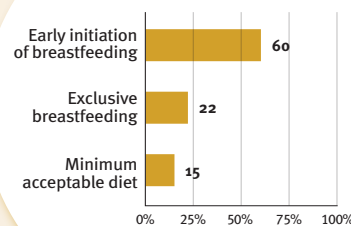
## Facilitating environments

Policies				
None	<14	14 – <18	18 – <26	≥26
Paid maternity leave (weeks)				
None	<14	14 – <18	18 – <26	≥26
Paid paternity leave (weeks)				
Not	Slightly	Moderately	Substantially	
International Code of Marketing of Breastmilk Substitutes (alignment)				
✓	National minimum wage			
✗	Child and family social protection			

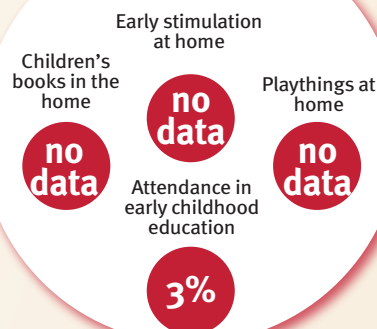
### Health



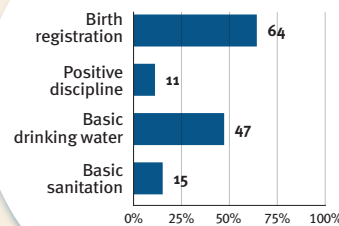
### Nutrition



### Early learning



### Security and safety



### Responsive caregiving

Public information about ECD  
Parental mental health  
Parent support (groups, home visits)  
Quality child day care



Comparative country data urgently needed

### International conventions

✓	Convention on the Rights of the Child
✓	Convention on the Rights of Persons with Disabilities
✓	CRC Optional Protocol on the Sale of Children, Child Prostitution and Child Pornography
✗	Hague Convention on Protection of Children and Cooperation in Respect of Intercountry Adoption