



Portugal

Countdown to 2030

Women's, Children's & Adolescents' Health

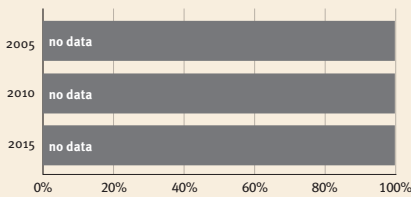
Demographics

Population	10,167,923
Annual births	77,986
Children under 5	396,199 (4%)
Under-five mortality	4/1,000

Threats to Early Childhood Development

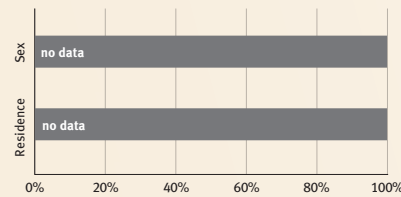
Maternal mortality	8/100,000	Adolescent birth rate	7/1,000
Low birthweight	9%	Preterm births	8%
Child poverty	no data	Under-five stunting	3%
Violent discipline	no data	Inadequate supervision	no data

Young children at risk of poor development



At risk in 2005, 2010 and 2015, using a composite indicator of under-five stunting or poverty

Risk by sex and residence



Lifetime cost of growth deficit in early childhood

no data — Estimate in terms of % loss of annual adult wage

Children with functional difficulty

no data

Children developmentally on-track

no data

Support and services for early childhood development: Nurturing care

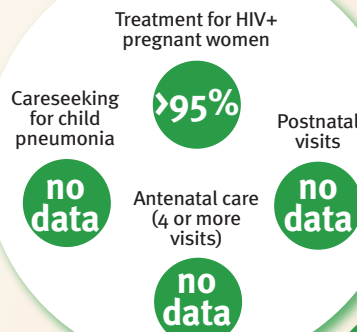
Parents and caregivers need a facilitating environment of laws, policies, services and community support to assist them in providing their young children with nurturing care.

Facilitating environments

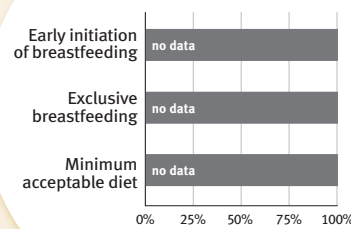
Policies				
None	<14	14 - <18	18 - <26	≥26
Paid maternity leave (weeks)				
Paid paternity leave (weeks)				

Not	Slightly	Moderately	Substantially
International Code of Marketing of Breastmilk Substitutes (alignment)			
National minimum wage			
Child and family social protection			

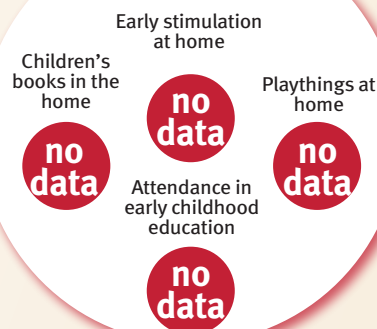
Health



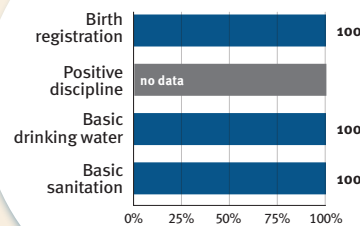
Nutrition



Early learning



Security and safety



Responsive caregiving

Public information about ECD
Parental mental health
Parent support (groups, home visits)
Quality child day care



Comparative country data urgently needed

International conventions

	Convention on the Rights of the Child
	Convention on the Rights of Persons with Disabilities
	CRC Optional Protocol on the Sale of Children, Child Prostitution and Child Pornography
	Hague Convention on Protection of Children and Cooperation in Respect of Intercountry Adoption