



Ukraine

Countdown to 2030

Women's, Children's & Adolescents' Health

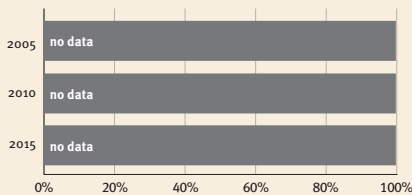
Demographics

Population	43,466,822
Annual births	384,907
Children under 5	2,015,032 (5%)
Under-five mortality	8/1,000

Threats to Early Childhood Development

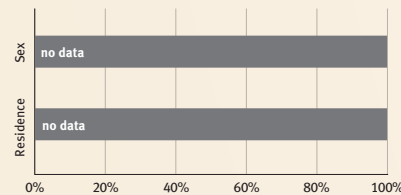
Maternal mortality	19/100,000	Adolescent birth rate	18/1,000
Low birthweight	6%	Preterm births	7%
Child poverty	no data	Under-five stunting	16%
Violent discipline	53%	Inadequate supervision	7%

Young children at risk of poor development



At risk in 2005, 2010 and 2015, using a composite indicator of under-five stunting or poverty

Risk by sex and residence



Lifetime cost of growth deficit in early childhood

no data — Estimate in terms of % loss of annual adult wage

Children with functional difficulty

no data

Children developmentally on-track

89%

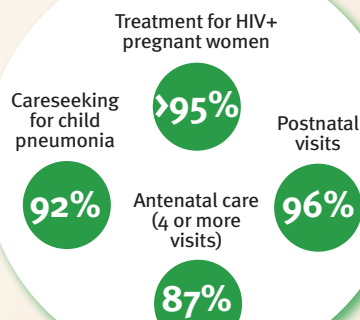
Support and services for early childhood development: Nurturing care

Parents and caregivers need a facilitating environment of laws, policies, services and community support to assist them in providing their young children with nurturing care.

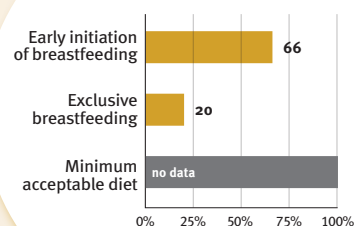
Facilitating environments

Policies				
None	<14	14 – <18	18 – <26	≥26
Paid maternity leave (weeks)				
None	<14	14 – <18	18 – <26	≥26
Paid paternity leave (weeks)				
Not	Slightly	Moderately	Substantially	
International Code of Marketing of Breastmilk Substitutes (alignment)				
✓	National minimum wage			
✓	Child and family social protection			

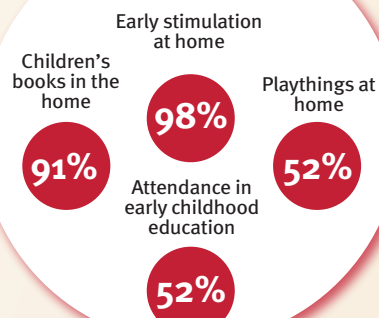
Health



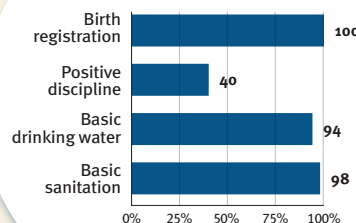
Nutrition



Early learning



Security and safety



Responsive caregiving

Public information about ECD
Parental mental health
Parent support (groups, home visits)
Quality child day care

?

Comparative country data urgently needed

International conventions

✓	Convention on the Rights of the Child
✓	Convention on the Rights of Persons with Disabilities
✓	CRC Optional Protocol on the Sale of Children, Child Prostitution and Child Pornography
✗	Hague Convention on Protection of Children and Cooperation in Respect of Intercountry Adoption