



# Uzbekistan

Countdown to 2030

Women's, Children's & Adolescents' Health

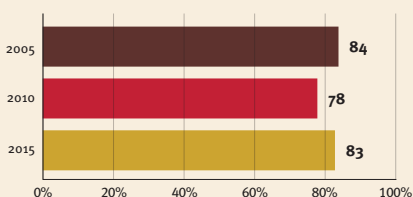
## Demographics

Population	33,935,765
Annual births	664,427
Children under 5	3,412,530 (10%)
Under-five mortality	17/1,000

## Threats to Early Childhood Development

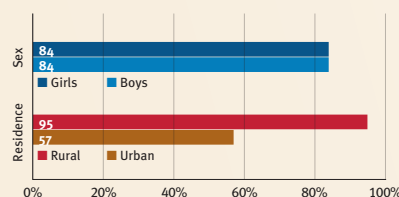
Maternal mortality	29/100,000	Adolescent birth rate	19/1,000
Low birthweight	5%	Preterm births	9%
Child poverty	no data	Under-five stunting	10%
Violent discipline	no data	Inadequate supervision	5%

## Young children at risk of poor development

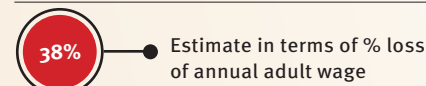


At risk in 2005, 2010 and 2015, using a composite indicator of under-five stunting or poverty

## Risk by sex and residence



## Lifetime cost of growth deficit in early childhood



## Children with functional difficulty

no data

## Children developmentally on-track

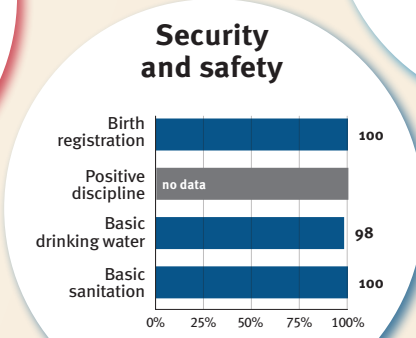
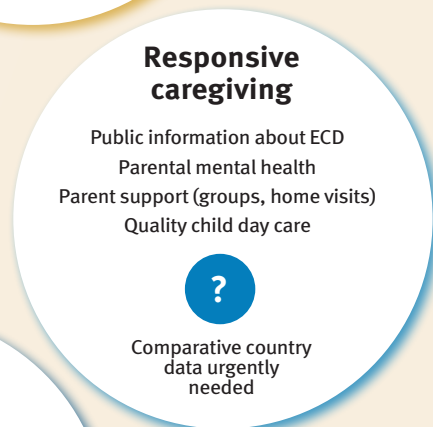
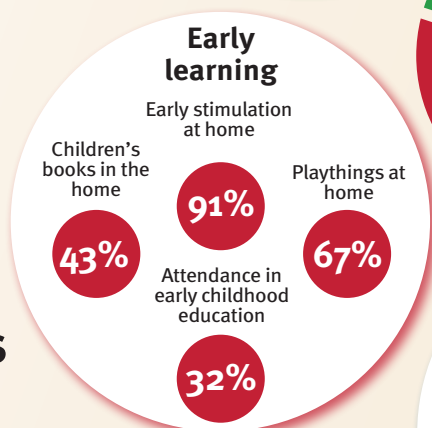
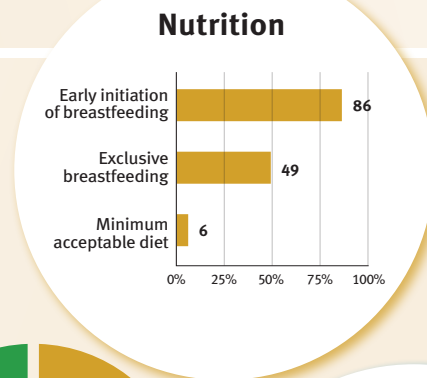
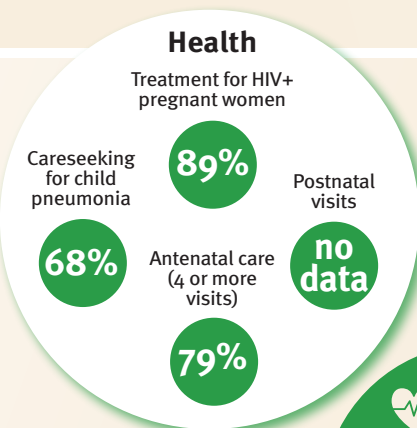
no data

## Support and services for early childhood development: Nurturing care

Parents and caregivers need a facilitating environment of laws, policies, services and community support to assist them in providing their young children with nurturing care.

## Facilitating environments

Policies				
None	<14	14 - <18	18 - <26	≥26
Paid maternity leave (weeks)				
None	<14	14 - <18	18 - <26	≥26
Paid paternity leave (weeks)				
Not	Slightly	Moderately	Substantially	
International Code of Marketing of Breastmilk Substitutes (alignment)				
✓	National minimum wage			
✓	Child and family social protection			



International conventions	
✓	Convention on the Rights of the Child
✓	Convention on the Rights of Persons with Disabilities
✓	CRC Optional Protocol on the Sale of Children, Child Prostitution and Child Pornography
✗	Hague Convention on Protection of Children and Cooperation in Respect of Intercountry Adoption