

Nurturing Care for Early Childhood In Crises A Regional Arab Perspective

December 2021

Dr. Ghassan Issa

General Coordinator

the Arab Network for Early Childhood



Vision:

Children in Arab communities enjoy their rights, happiness, and well-being in an enriching environment of freedom, social justice and equality.

The mission:

To connect, empower, align, advocate, produce, and deliver through effective networking regionalized ECD resources and expertise to Arab communities on young children's rights to health, education, family life, play, and recreation.

The network works with partners/members in ten Arab countries :

Lebanon, Palestine, Jordan, Oman, Yemen,

Sudan, Syria, Egypt, Tunisia, Morocco .

A flexible network that includes a diverse, multi-sectoral, and multidisciplinary group of representatives from ministries of education, health, and social affairs, childhood councils, NGOs, academics, as well as individual experts.

1- Early childhood care and development determinants

2- Nurturing care in times of crisis

3- Holistic integrated approach

4- The network: a participatory working space

5- Strategies

6- Toolbox





Like all other countries in the world, Arab countries are dealing with crises:

- **Palestine**
- **Syria**
- **Iraq**
- **Yemen**
- **Libya**
- **Sudan**
- **Lebanon**
- **Jordan**
- **Egypt**
- **Somalia**
-

Determinants of early childhood development and care:

- **Poverty**
- **Violence: occupation / wars / refuging**
- **Political instability**
- **Inequity and inequality**
- **Environmental erosion and climate change**
- **Gender discrimination**

1- Early childhood development and care determinants

2- Nurturing care in times of crisis

3- Holistic integrated approach

4- The network: a participatory working space

5- Strategies

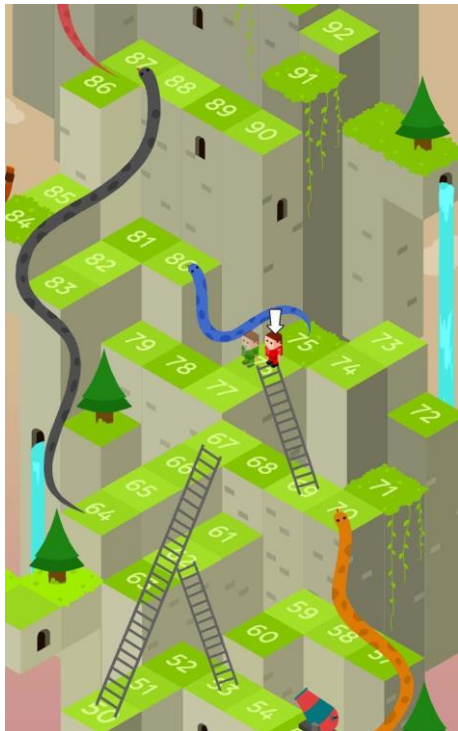
6- Toolbox



The tragedy of Arab children:

Nurturing Care

In times of multi-dimensional crises



- Chronic emergencies
- Multi-Dimensional crises

Transform

Thrive

Survive



Back to square one
Survival

1- Early child development and care determinants

2- Nurturing care in times of crisis

3- Holistic integrated approach

4- The network: a participatory working space

5- Strategies

6- Toolbox



Three basic principles For an integrative holistic approach

The child is one unified entity,
important in all its aspects, as each element is affected by and
influences the other elements.

Childhood is an integrated life stage in itself,
and the child has the right and needs to live it in its entirety.

Development occurs in sequential, predictable steps,
interspersed with periods when the child is ready to learn in a timely
manner.





Supportive and enriching environment

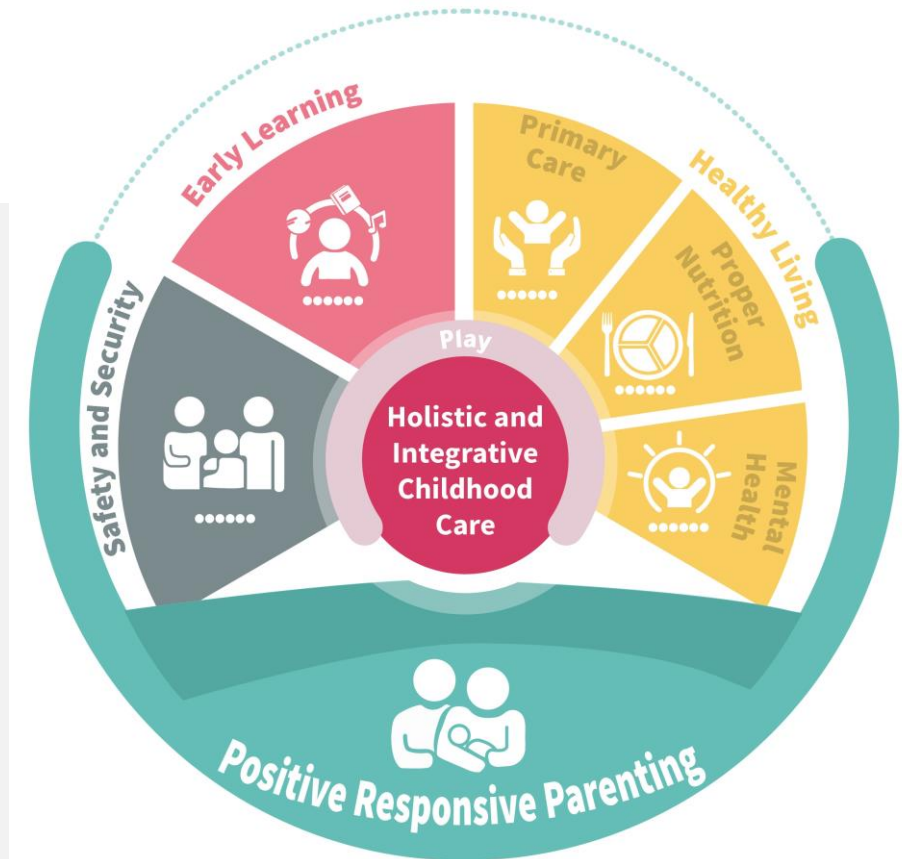


**Holistic
integrated
multi-
sectoral
and multi-
disciplinary
approach
to Early
Childhood
Care and
Development**

Holistic: The child is one unified entity

Integrated : taking child different needs into account .

Arab Resource Collective: Health, Early Learning, and Protection Parenting, Program (HEPPP)



*Positive responsive parenting:
The incubator of the other components*



Integration and inclusiveness between:

- **Nurturing care**
- **Survive, Thrive, and Transform**
- **Supportive and enriching environment**
- **Sustainable Development Goals (17)**



For: 5 Ps

1. **People**
2. **Prosperity**
3. **Peace**
4. **Partnership**
5. **Planet**



1- Early child development and care determinants

2- Nurturing care in times of crisis

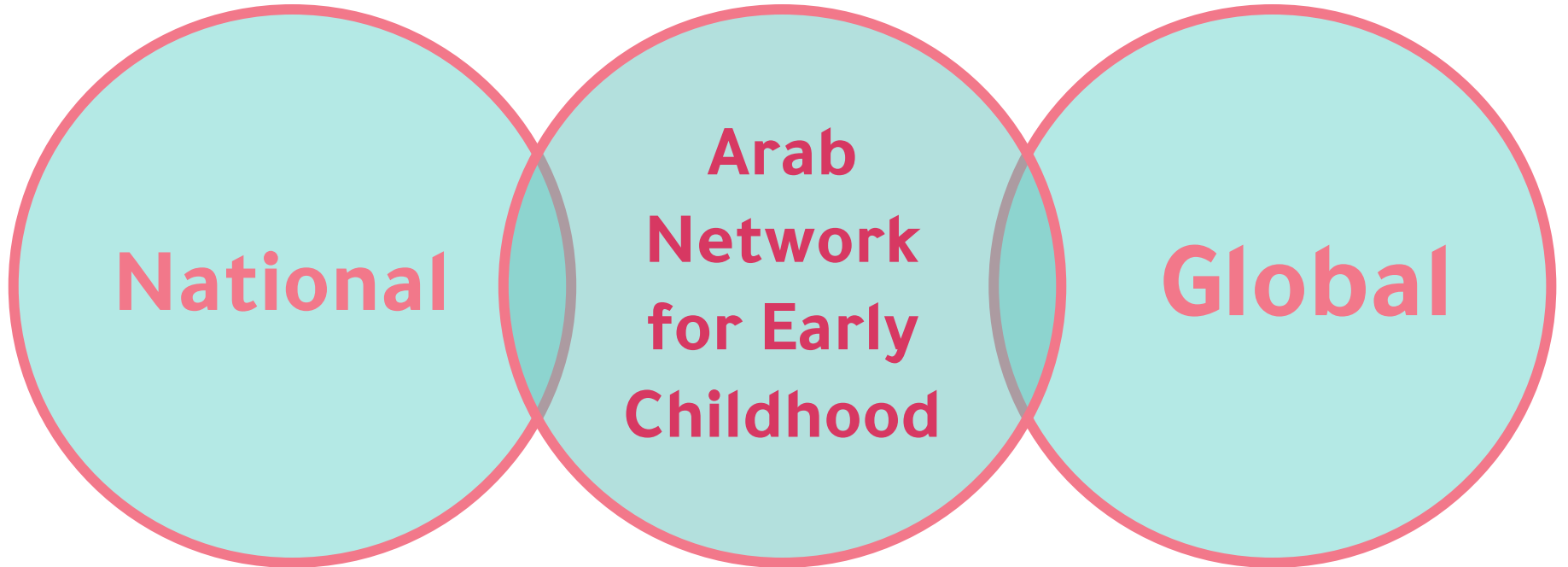
3- Holistic integrated approach

4- The network: a participatory working space

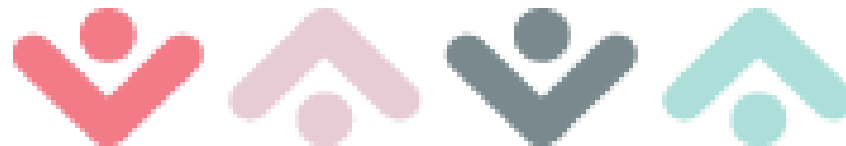
5- Strategies

6- Toolbox





Interaction space between
the national and the global in the regional field



1- Early child development and care determinants

2- Nurturing care in times of crisis

3- Holistic integrated approach

4- The network: a participatory working space

5- Strategies

6- Toolbox



Five strategic areas of intervention :

ECD Workforce

ECD IN EMERGENCY
CONTEXTS

Child Rights

DIGITAL EMPOWERMENT
AND DISTANT
INTERVENTIONS

ENVIRONMENT HAZARDS
AND CLIMATE CHANGE
IN ECD



1- Early child development and care determinants

2- Nurturing care in times of crisis

3- Holistic integrated approach

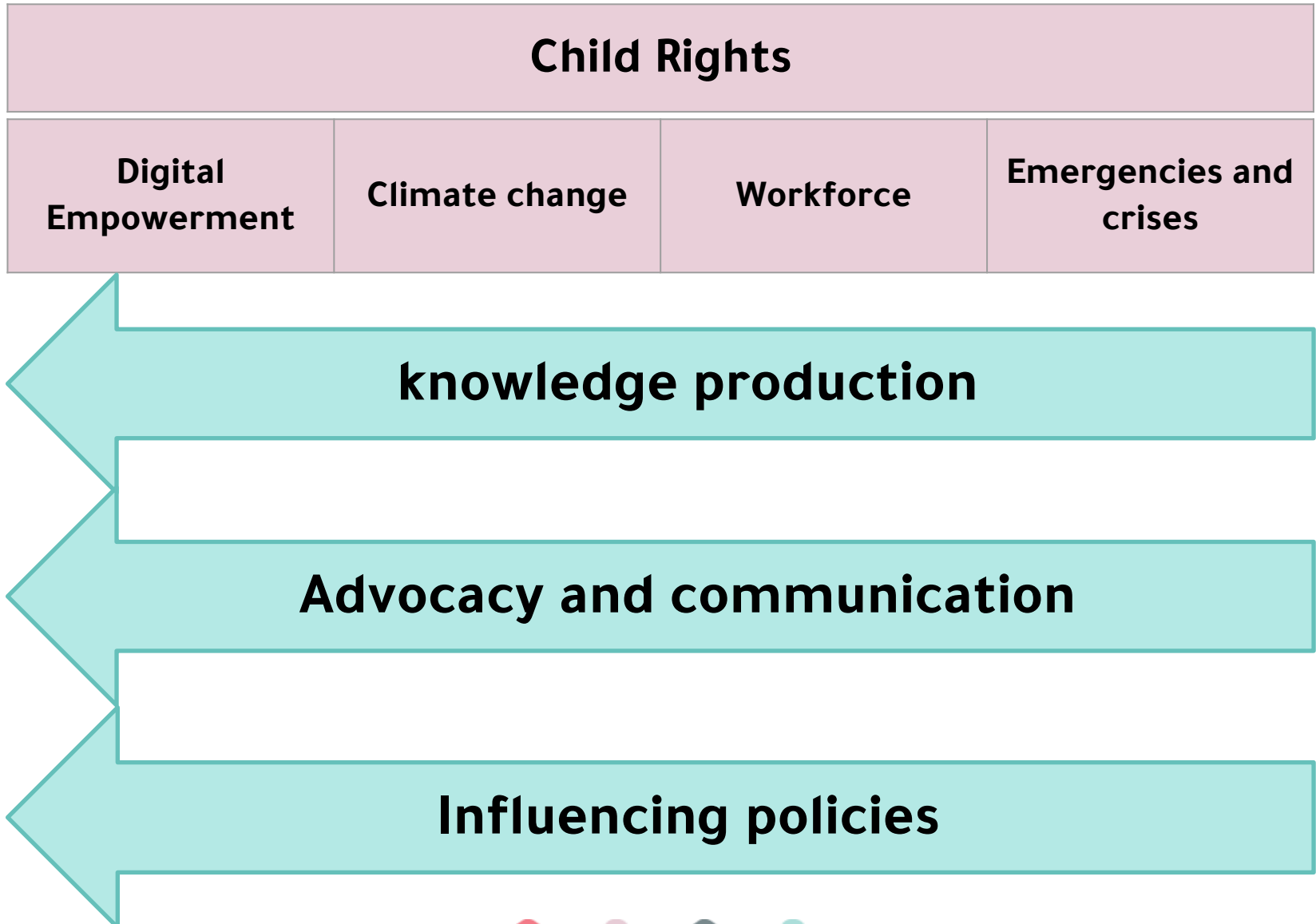
4- The network: a participatory working space

5- Strategies

6- Toolbox



Three cross-strategic working tools :





Thank you _

arcgi@mawared.org

www.anecd.net

