



Center on the Developing Child
HARVARD UNIVERSITY

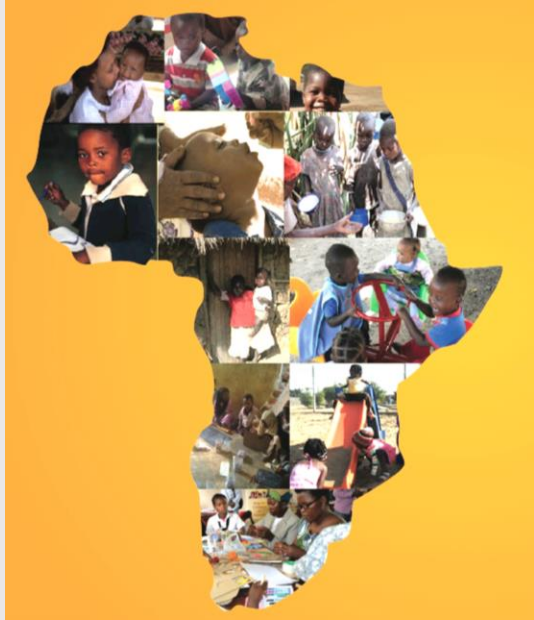
Leveraging Science to Foster Resilience in Families and Communities

HCDC-Regional ECD Networks Webinar
November 21, 2022

Find Us: Center on the Developing Child at Harvard



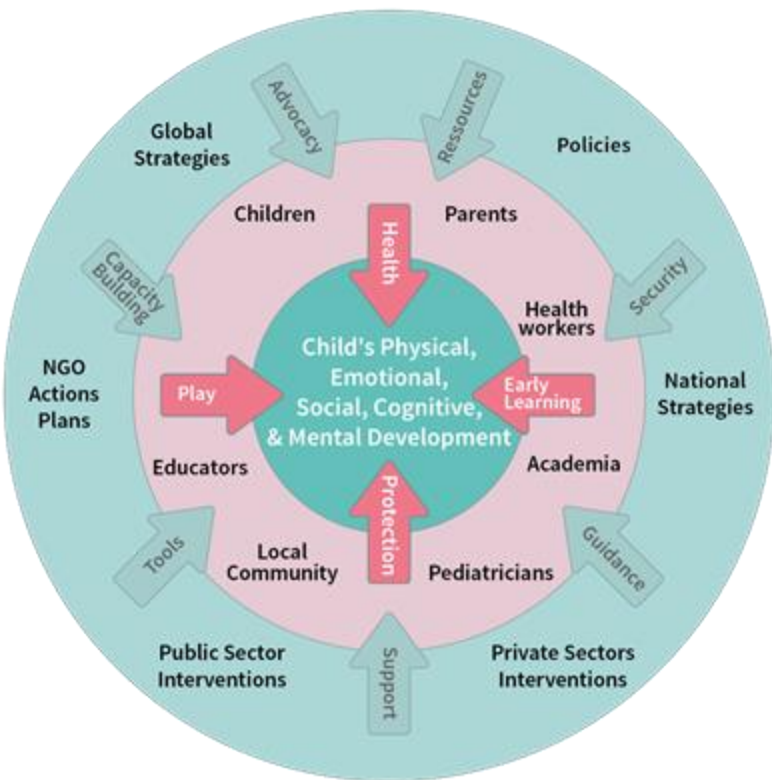
The Africa Early Childhood Network - AfECN



- A non-profit professional network established in Kenya operating at the regional level;
 - Regional Platform to champion and promote excellence and collaboration for positive early childhood outcomes;
 - Convenes the African Union Commission CESA ECED Cluster.
-
- **Programme Areas**
 - ✓ Advocacy for protection of children's rights
 - ✓ Influencing ECD policy and practice;
 - ✓ Strengthening partnerships;
 - ✓ ECDE Knowledge generation and dissemination.
 - ✓ Leadership Development

Arab Network for Early Childhood – ANECD

www.anecd.net



ANECD Working Areas

Child Rights

ECD in
Emergencies

Digital
Empowerment

Ecology and
Climate
Change

ECD Workforce

ANECD's work spans over 10 Arab countries, including:

Lebanon

Palestine

Egypt

Morocco

Yemen

Tunisia

Jordan

Oman

Sudan

Iraq



ARNEC

All young children in the Asia-Pacific Region realise optimal wellbeing and development

ARNEC connects partners and stakeholders in the Asia-Pacific region and beyond to advance holistic and inclusive ECD at the sub-national, national, and regional levels

ARNEC delivers our work through knowledge platforms, advocacy, and partnerships

Relevant and growing knowledge base on ECD reflecting regional priorities

1

Targeted and evidence-based advocacy for holistic and inclusive ECD

2

Strategic partnerships for priority ECD actions at region

3

Strengthened capacity and reach of ARNEC as a network

4

Responsive Caregiving

Preparedness and Response to Crises affecting Young Children (e.g., COVID-19)

Opportunities for Early Learning

Clean, Safe, and Sustainable Environments

Ensuring Equity

Global Footprint of ISSA Members



INTERNATIONAL
STEP by STEP
ASSOCIATION



Our vision is a society where all families, communities and professionals work together to empower each child to reach their unique full potential and embrace values of social justice and equity.



Center on the Developing Child
HARVARD UNIVERSITY

Leveraging Science to Foster Resilience in Families and Communities

JAMES CAIRNS

Senior Director, Strategic Engagements and Organizational Learning
Center on the Developing Child at Harvard University

HCDC-Regional ECD Networks Webinar

November 21, 2022

Find Us: Center on the Developing Child at Harvard





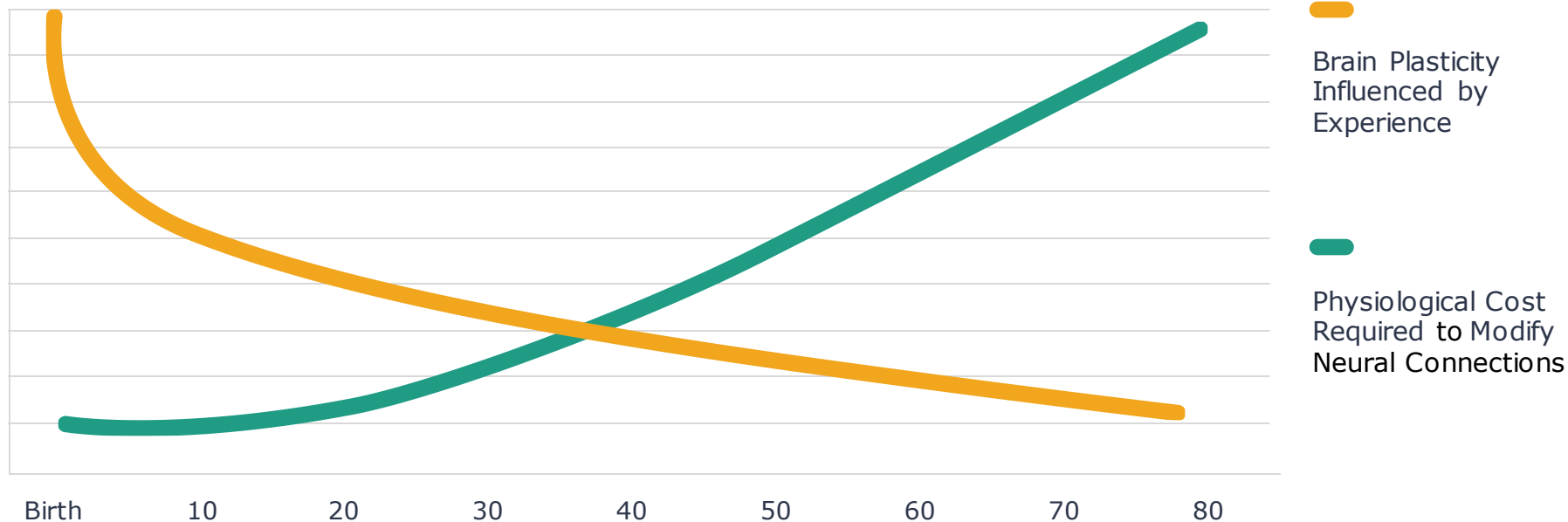
The Science of Resilience

- A Definition: *Resilience is a positive, adaptive response in the face of significant hardship or adversity*
- Resilience is built over time; it is NOT a trait
- It is the **interaction** between protective factors in the social environment and responsive biological systems
- A combination of supportive relationships, adaptive skill-building, and positive experiences form the foundation of resilience.
- Resilience can be situation-specific, not a generalizable outcome

Responsive Relationships and Early Experiences Shape Brain Architecture

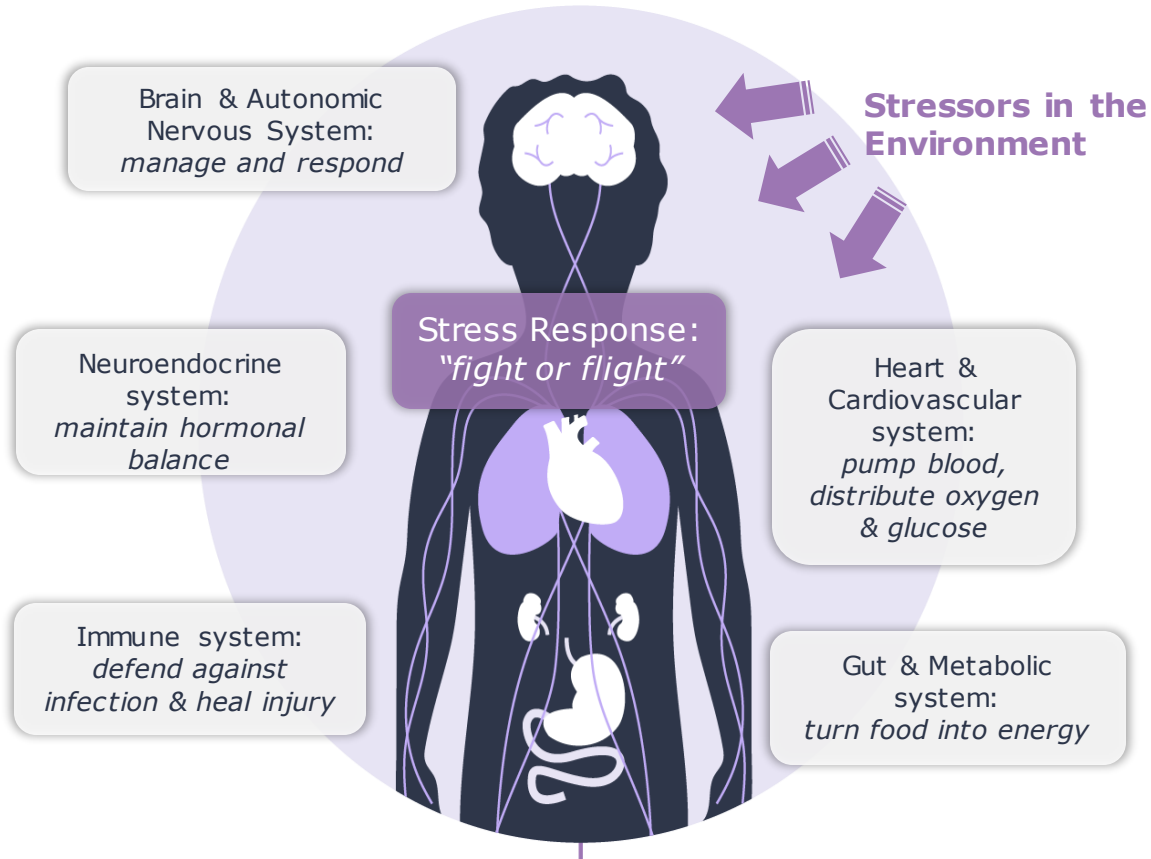


Why Early Experiences are so Important



Source: Levitt (2009)

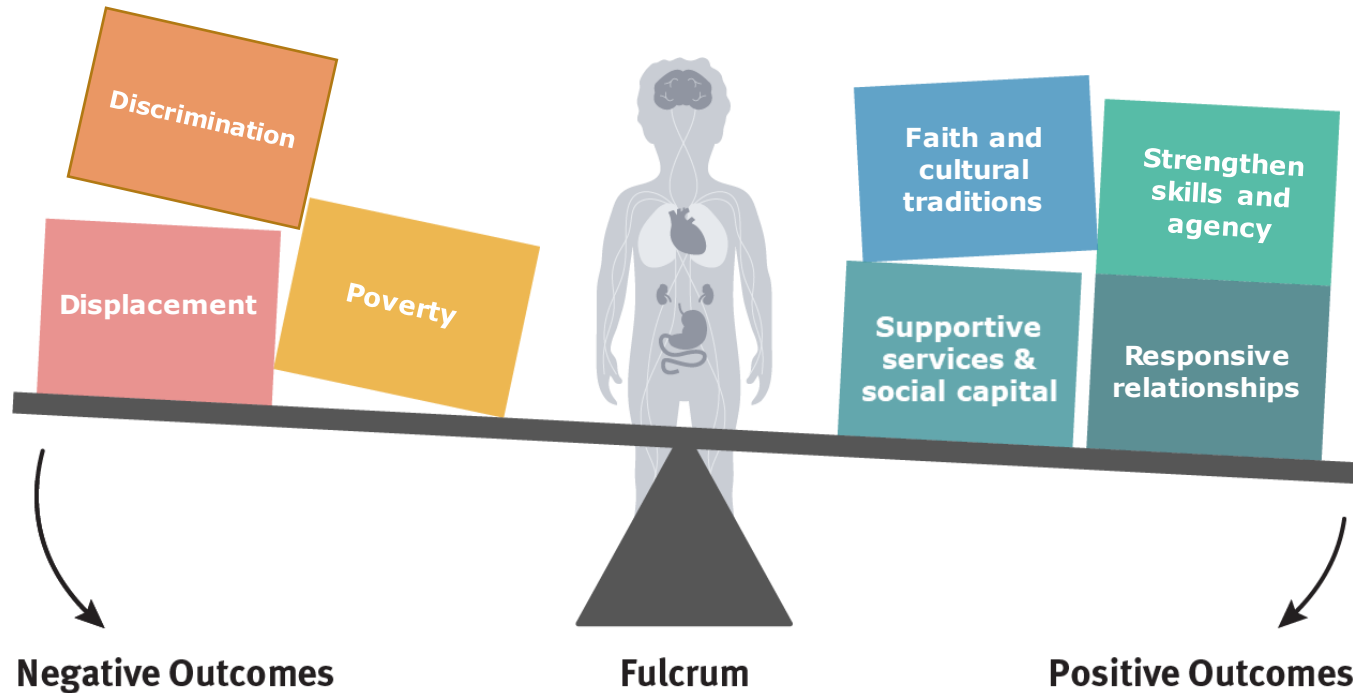
Impact of Stress on Multiple Biological Systems



Take-Home:
Supporting families with young children is as much about building a strong foundation for lifelong health as it is about early learning, social-emotional development, and school readiness.

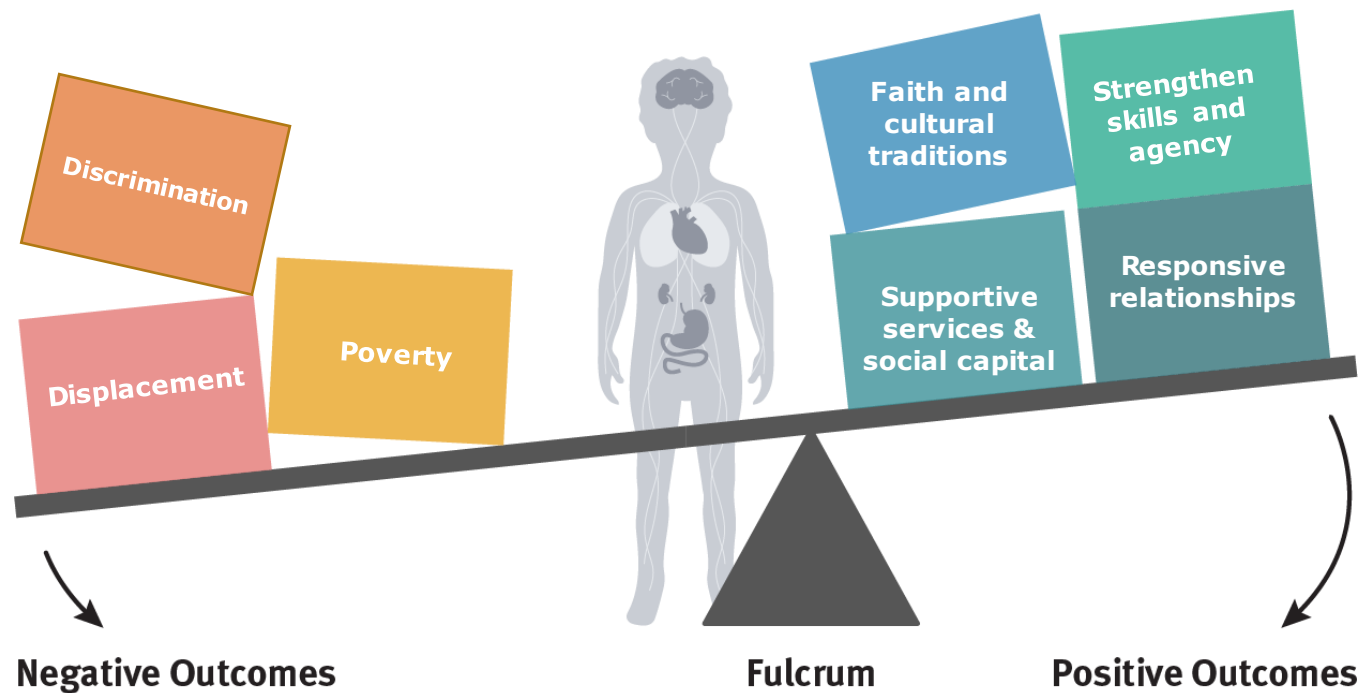
Increasing Resilience in the Face of Adversity

by strengthening buffers and building adaptive capacities



Increasing Resilience in the Face of Adversity

by strengthening buffers and building adaptive capacities

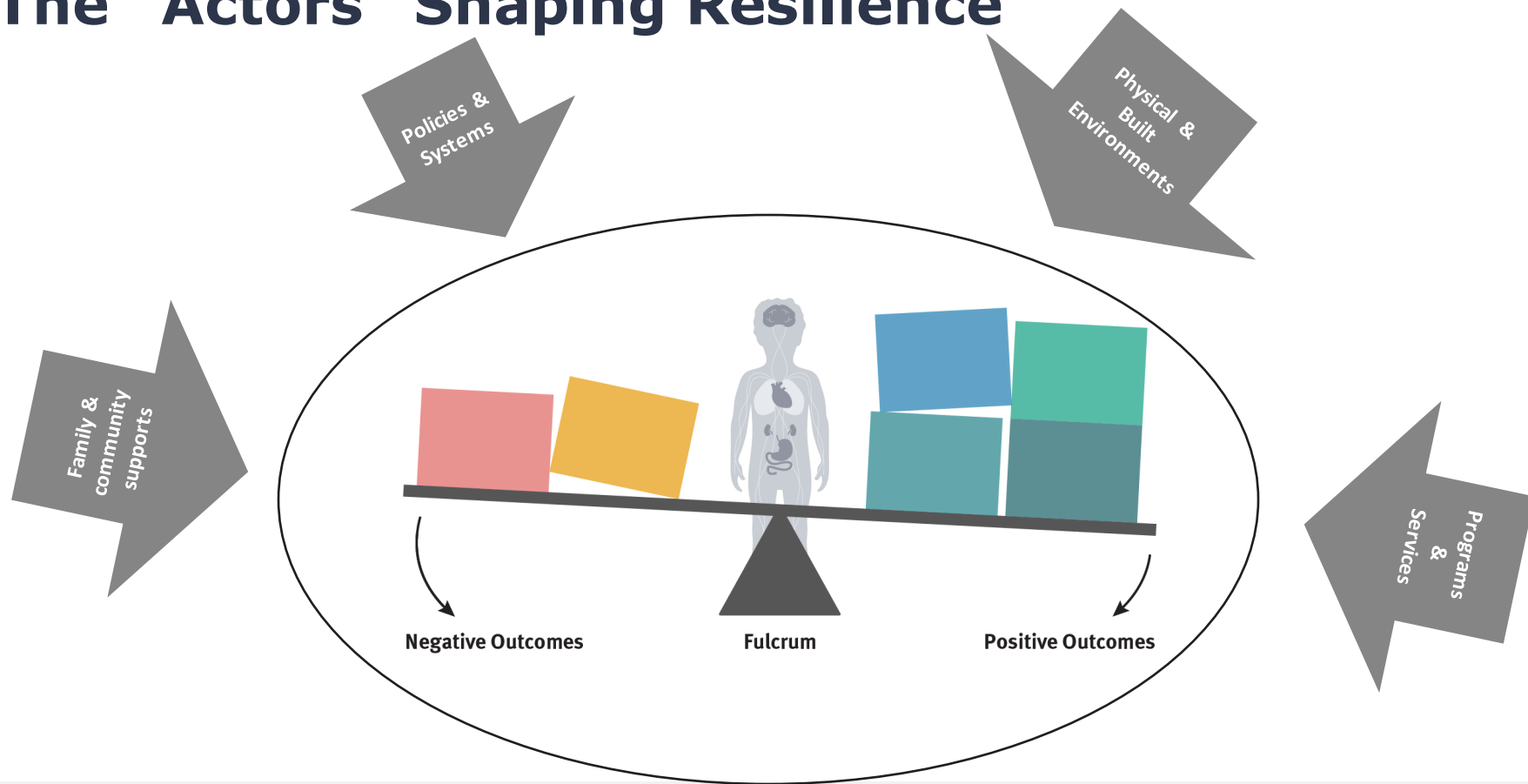


Positive Factors that Build Resilience

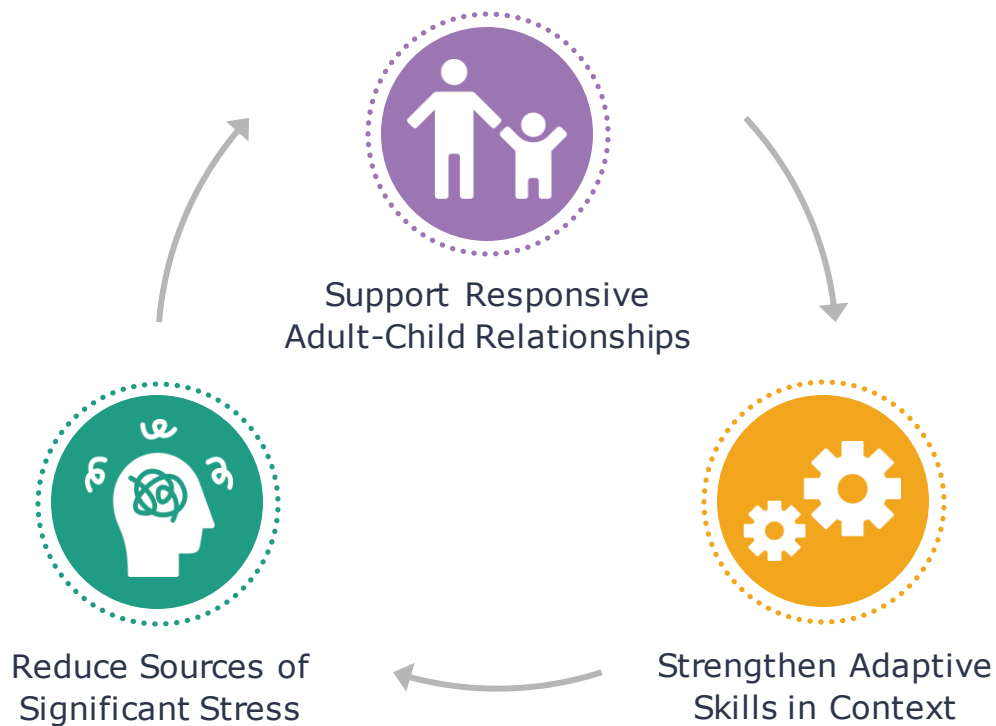
- *Facilitating Responsive Relationships*
- *Strengthening adaptive skills and self-regulatory capacities*
- *Increasing a Sense of Mastery/Agency*
- *Drawing on Faith and Cultural Traditions*

Providing Community
Supports & Building
Social Capital

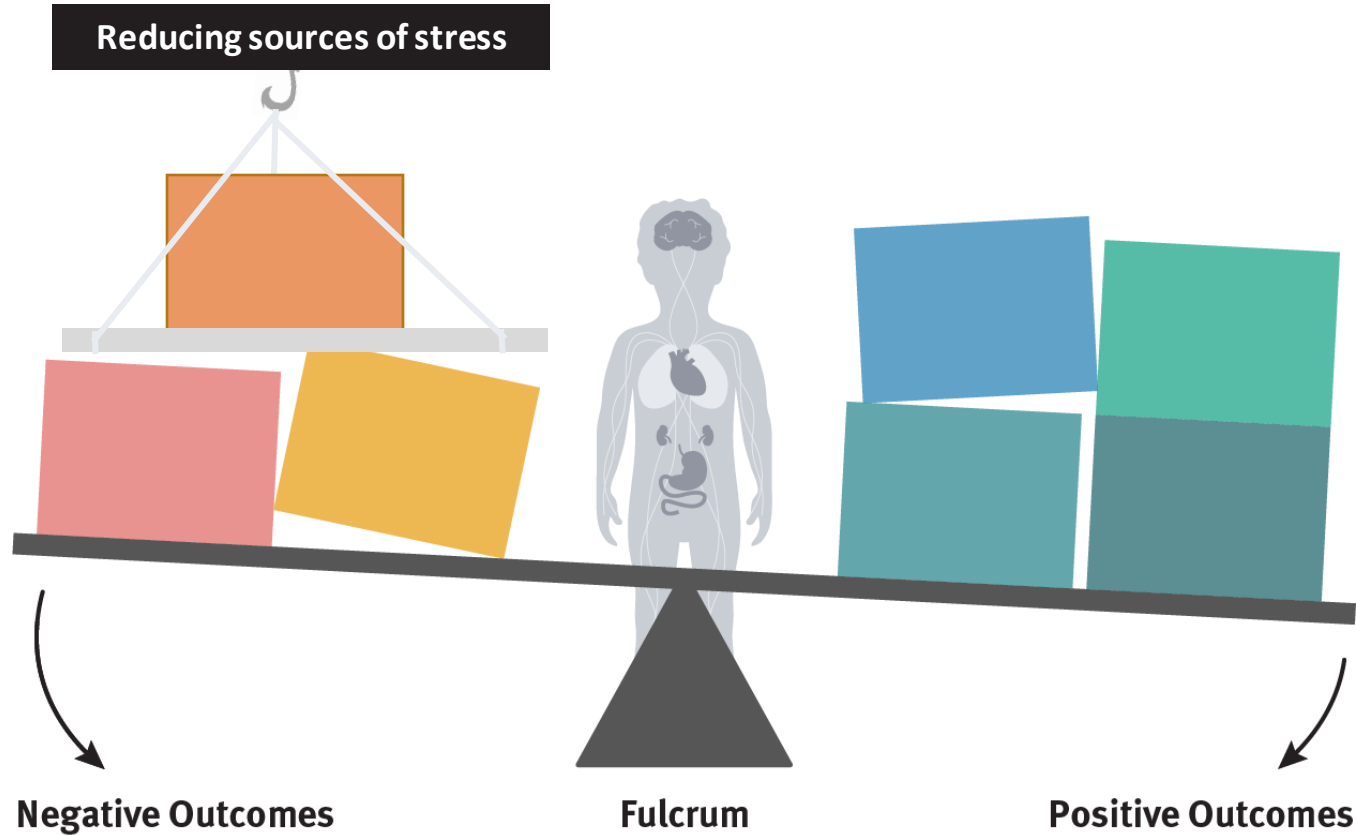
The "Actors" Shaping Resilience



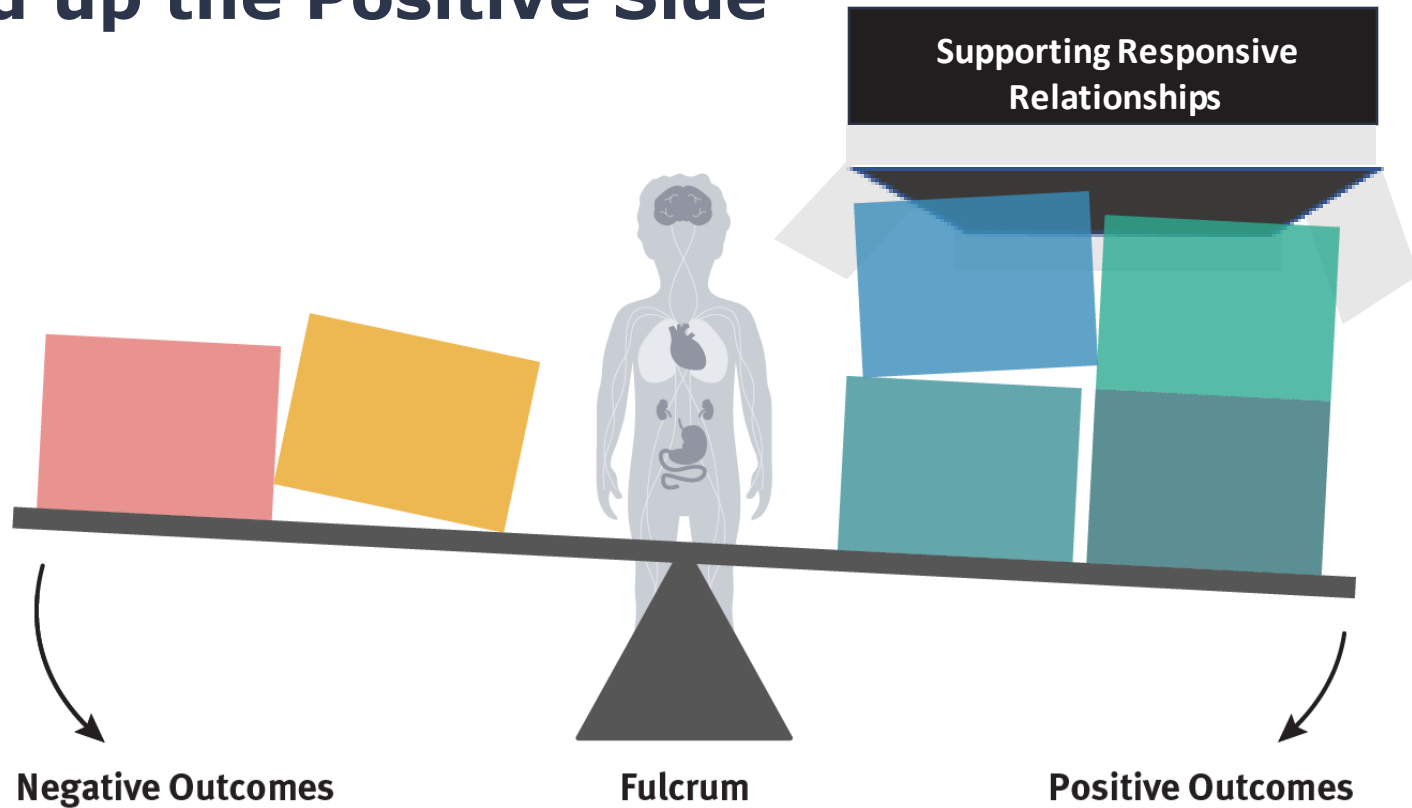
3 Science-Based Principles to Help Build Resilience



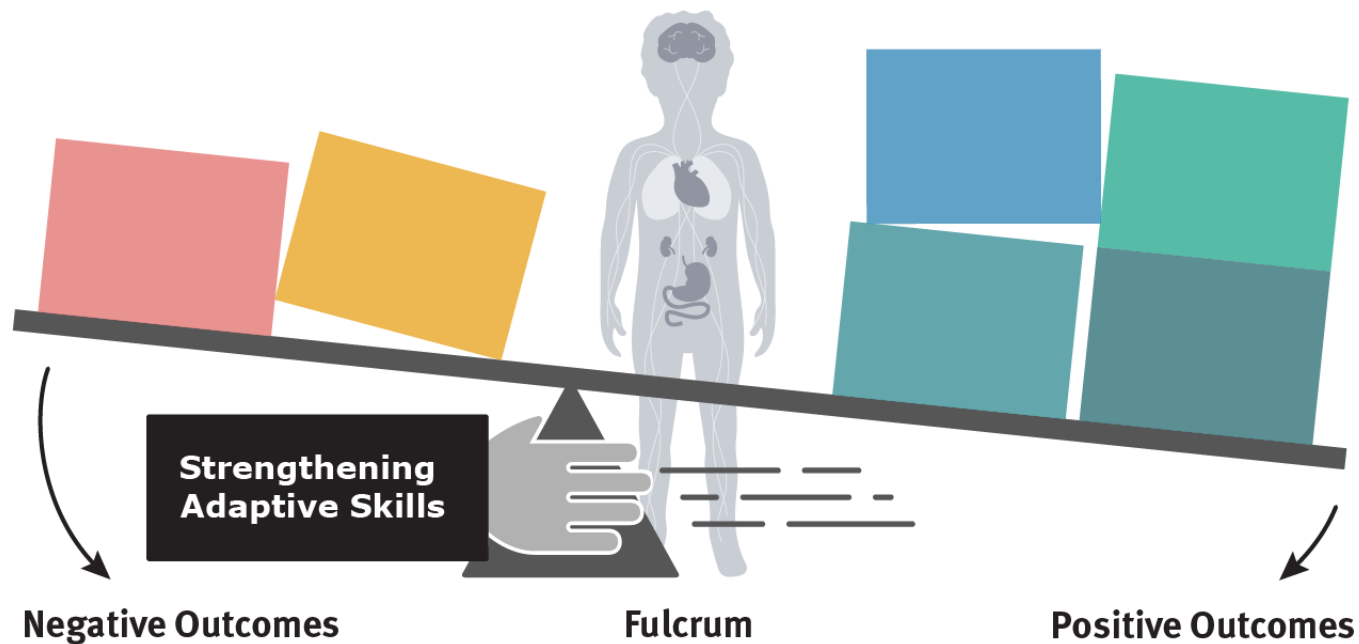
Unload the Negative Side



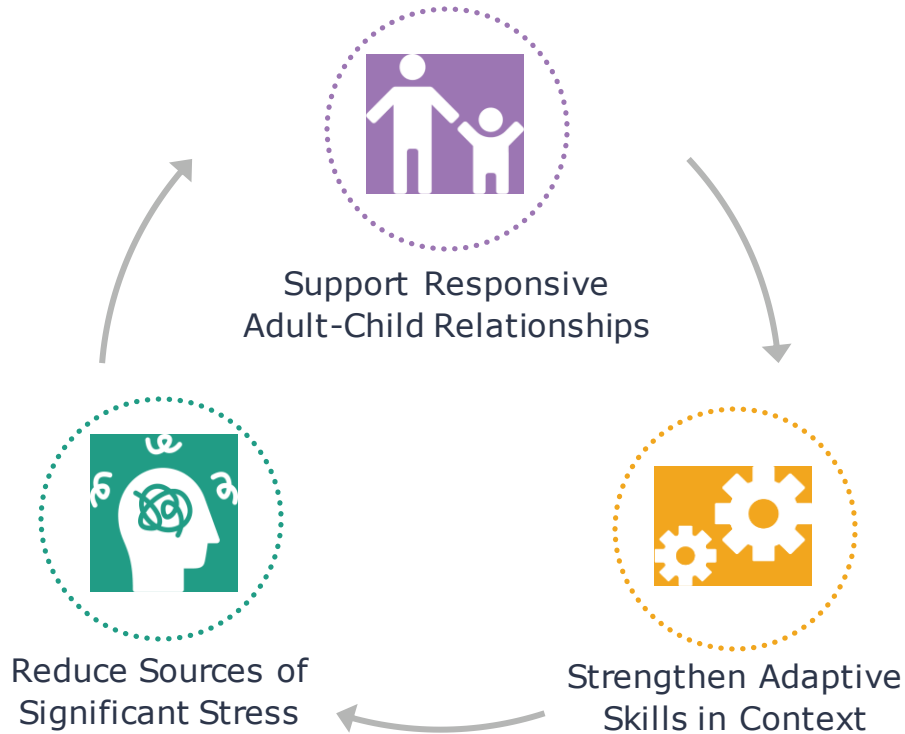
Load up the Positive Side



Move the Fulcrum

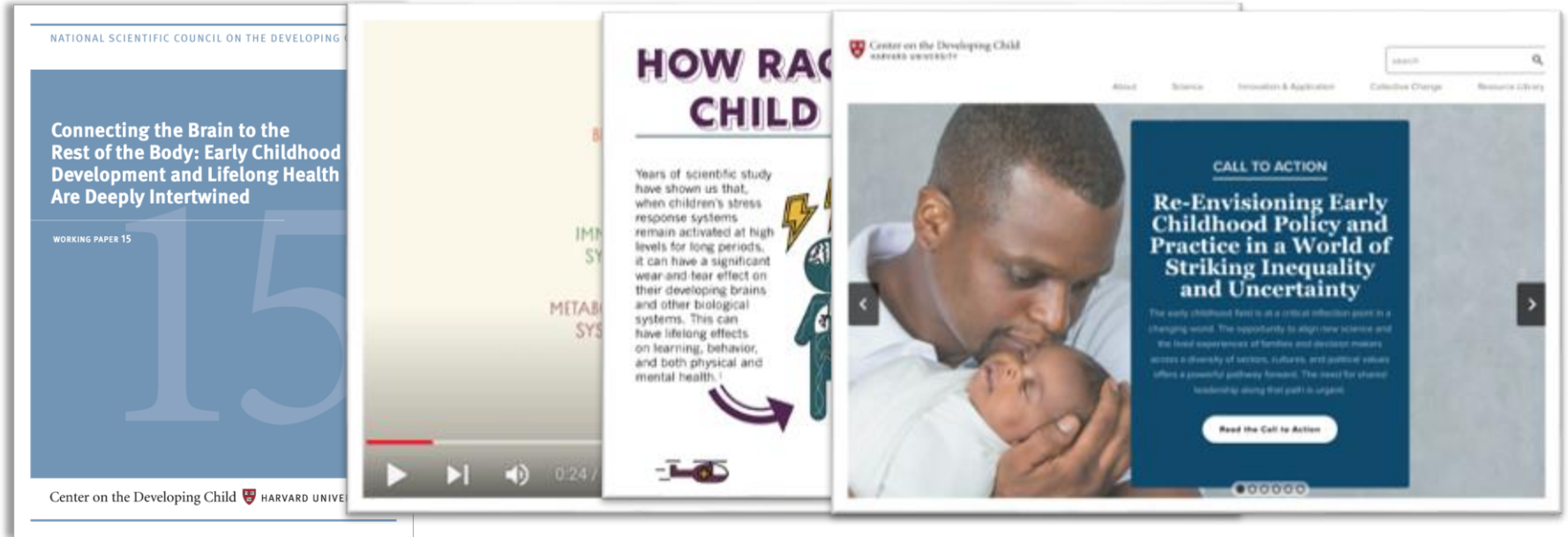


Aligning Science Principles with the Nurturing Care Framework





Center on the Developing Child HARVARD UNIVERSITY



www.developingchild.harvard.edu



Leveraging Science & Advocacy to Advance Early Childhood Policies and Programs



Teresa Njoroge
Founder & CEO,
Clean Start Kenya



Rositsa Milkova-Joel
Project Manager,
Trust for Social Achievement



Kishore Shrestha
Chairperson, Alliance for
Early Childhood
Development Nepal



Grace Boutros
Regional Programmes
Coordinator,
Arab Resource Collective

3 Science-based Design Principles to Improve Impact



Reduce Sources of Significant Stress



Support Responsive Adult-Child Relationships



Strengthen Adaptive Skills in Context

3 Framing Tools



1. Values
2. Simplifying Models
3. A “Core Story”

THANK YOU!

