



Bolivia (Plurinational State of)

Countdown to 2030

Women's, Children's & Adolescents' Health

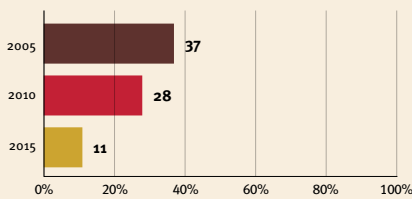
Demographics

Population	12,224,110
Annual births	264,070
Children under 5	1,274,322 (10%)
Under-five mortality	25/1,000

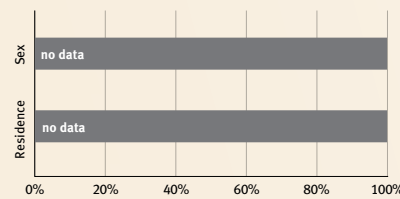
Threats to Early Childhood Development

Maternal mortality	161/100,000	Adolescent birth rate	71/1,000
Low birthweight	8%	Preterm births	9%
Child poverty	15%	Under-five stunting	11%
Violent discipline	no data	Inadequate supervision	no data

Young children at risk of poor development



Risk by sex and residence



Children with functional difficulty

no data

Children developmentally on-track

no data

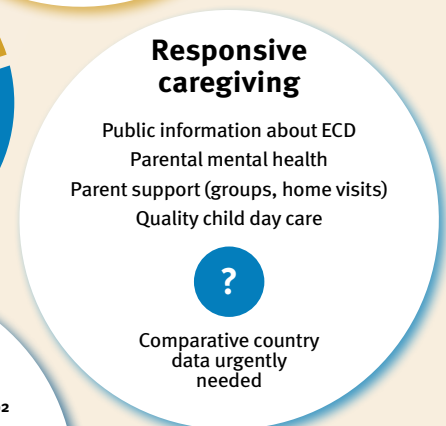
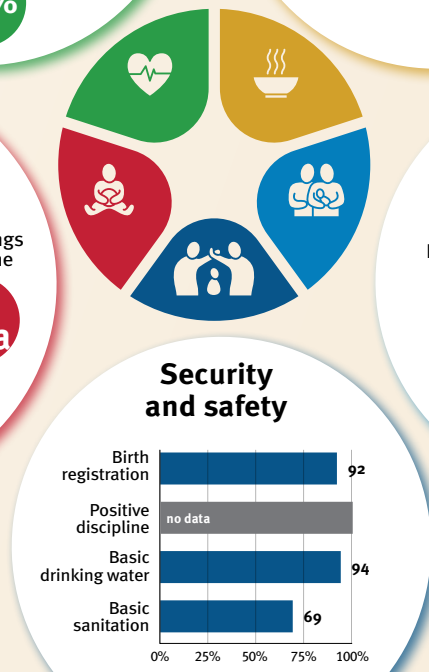
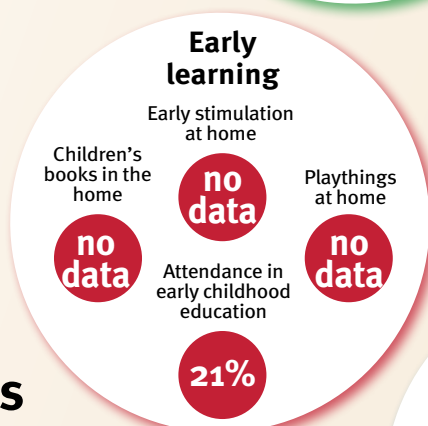
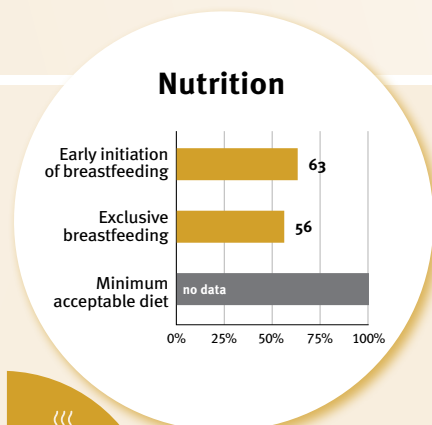
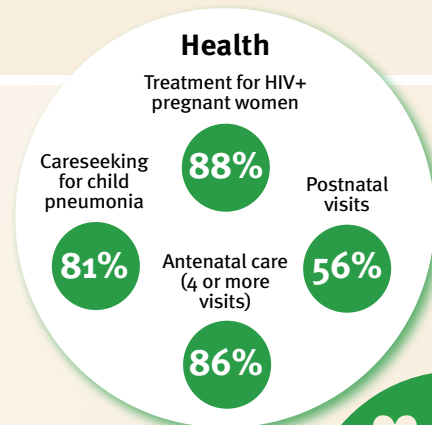
At risk in 2005, 2010 and 2015, using a composite indicator of under-five stunting or poverty

Support and services for early childhood development: Nurturing care

Parents and caregivers need a facilitating environment of laws, policies, services and community support to assist them in providing their young children with nurturing care.

Facilitating environments

Policies				
<20%	20-39%	40-59%	60-79%	≥80%
X Officially adopted national multisectoral ECD policy				
Child and family social protection				
None	<14	14 - <18	18 - <26	≥26
Maternity leave (weeks)				
None	<14	14 - <18	18 - <26	≥26
Paternity leave (weeks)				
Not	Slightly	Moderately	Substantially	
International Code of Marketing of Breastmilk Substitutes (alignment)				



International conventions

- ✓ Convention on the Rights of the Child
- ✓ Convention on the Rights of Persons with Disabilities
- ✓ CRC Optional Protocol on the Sale of Children, Child Prostitution and Child Pornography
- ✓ Hague Convention on Protection of Children and Cooperation in Respect of Intercountry Adoption