



# Costa Rica

## Countdown to 2030

Women's, Children's & Adolescents' Health

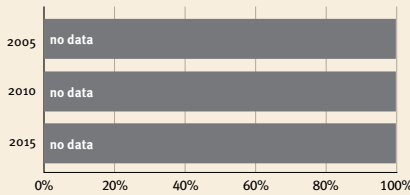
### Demographics

Population	5,180,829
Annual births	60,517
Children under 5	320,263 (6%)
Under-five mortality	8/1,000

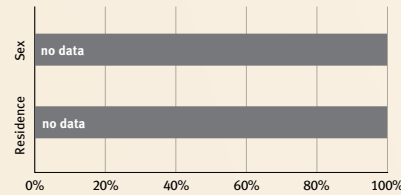
### Threats to Early Childhood Development

Maternal mortality	22/100,000	Adolescent birth rate	27/1,000
Low birthweight	9%	Preterm births	14%
Child poverty	no data	Under-five stunting	10%
Violent discipline	53%	Inadequate supervision	7%

### Young children at risk of poor development



### Risk by sex and residence



### Children with functional difficulty



### Children developmentally on-track



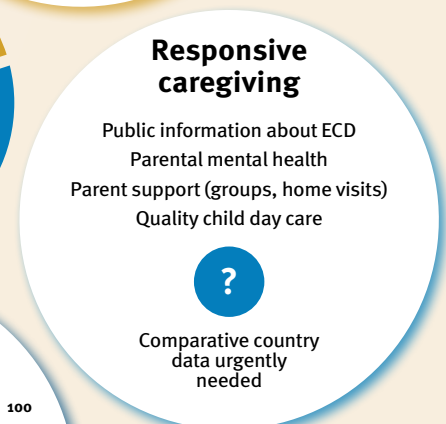
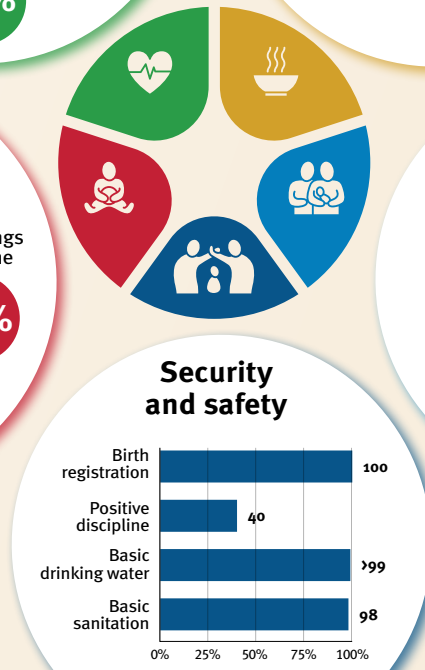
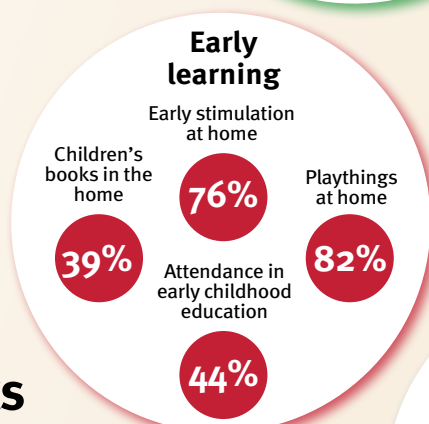
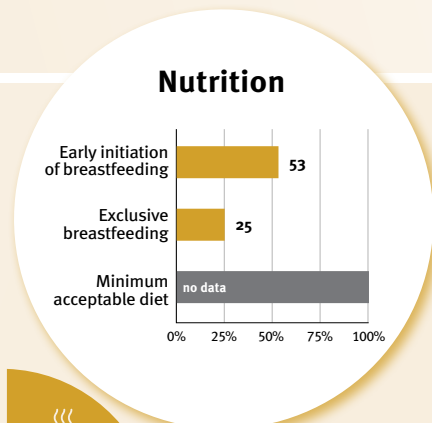
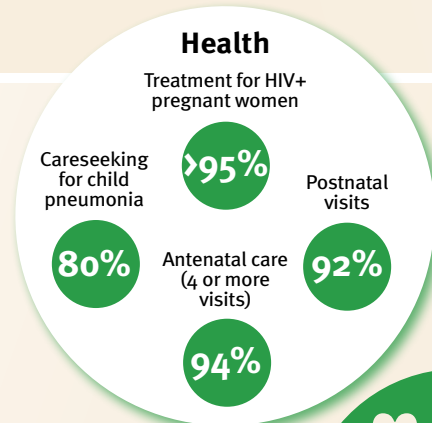
At risk in 2005, 2010 and 2015, using a composite indicator of under-five stunting or poverty

## Support and services for early childhood development: Nurturing care

Parents and caregivers need a facilitating environment of laws, policies, services and community support to assist them in providing their young children with nurturing care.

## Facilitating environments

Policies					
✓	Officially adopted national multisectoral ECD policy				
	<20%	20-39%	40-59%	60-79%	≥80%
	Child and family social protection				
None	<14	14 - <18	18 - <26	≥26	
	Maternity leave (weeks)				
None	<14	14 - <18	18 - <26	≥26	
	Paternity leave (weeks)				
Not	Slightly	Moderately	Substantially		
	International Code of Marketing of Breastmilk Substitutes (alignment)				



International conventions	
✓	Convention on the Rights of the Child
✓	Convention on the Rights of Persons with Disabilities
✓	CRC Optional Protocol on the Sale of Children, Child Prostitution and Child Pornography
✓	Hague Convention on Protection of Children and Cooperation in Respect of Intercountry Adoption