



# Cuba

## Countdown to 2030

Women's, Children's & Adolescents' Health

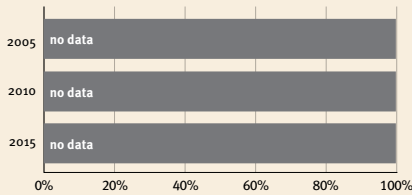
### Demographics

Population	11,212,191
Annual births	99,693
Children under 5	537,101 (5%)
Under-five mortality	5/1,000

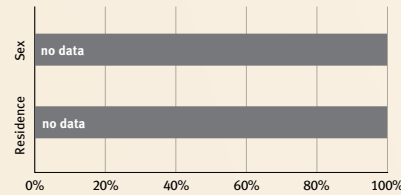
### Threats to Early Childhood Development

Maternal mortality	39/100,000	Adolescent birth rate	48/1,000
Low birthweight	7%	Preterm births	6%
Child poverty	no data	Under-five stunting	7%
Violent discipline	36%	Inadequate supervision	2%

### Young children at risk of poor development



### Risk by sex and residence



### Children with functional difficulty



### Children developmentally on-track

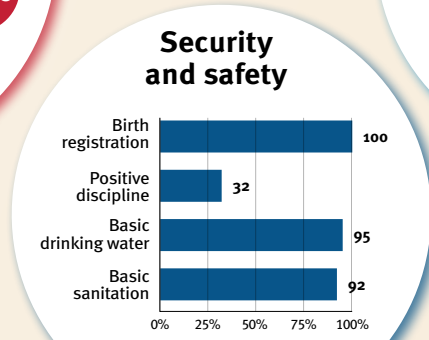
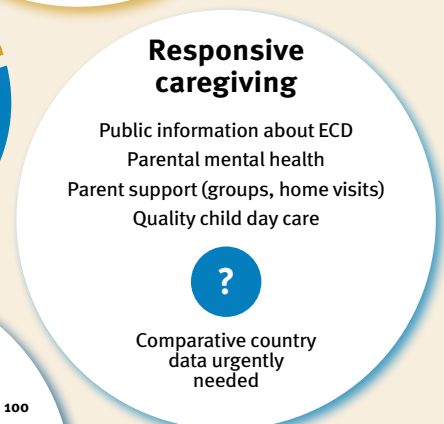
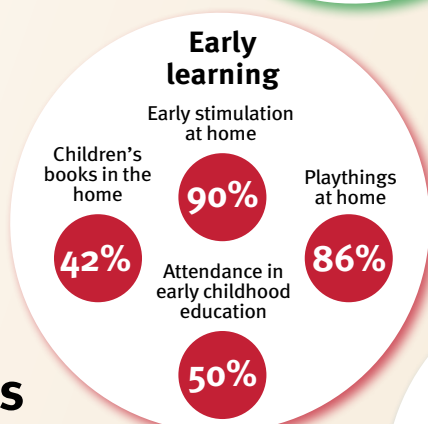
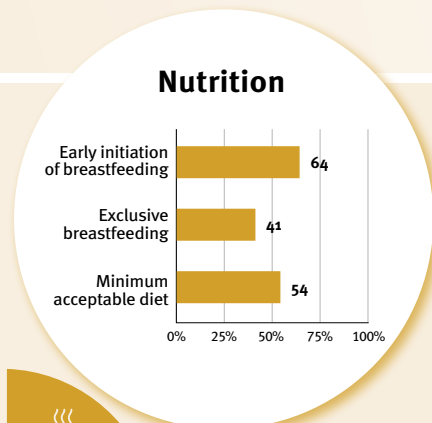
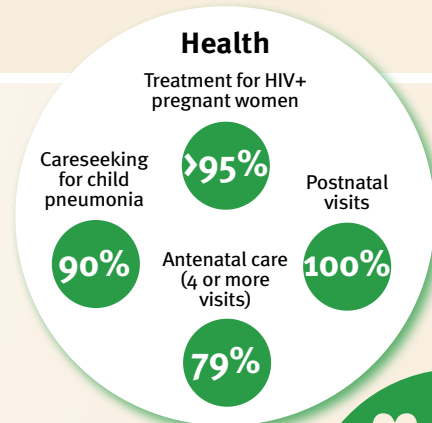


At risk in 2005, 2010 and 2015, using a composite indicator of under-five stunting or poverty

## Support and services for early childhood development: Nurturing care

Parents and caregivers need a facilitating environment of laws, policies, services and community support to assist them in providing their young children with nurturing care.

## Facilitating environments



Policies					
	<20%	20-39%	40-59%	60-79%	≥80%
Child and family social protection	None	<14	14 - <18	18 - <26	≥26
Maternity leave (weeks)	None	<14	14 - <18	18 - <26	≥26
Paternity leave (weeks)	Not	Slightly	Moderately	Substantially	
International Code of Marketing of Breastmilk Substitutes (alignment)					

International conventions	
✓	Convention on the Rights of the Child
✓	Convention on the Rights of Persons with Disabilities
✓	CRC Optional Protocol on the Sale of Children, Child Prostitution and Child Pornography
✓	Hague Convention on Protection of Children and Cooperation in Respect of Intercountry Adoption