



Dominican Republic

Countdown to 2030

Women's, Children's & Adolescents' Health

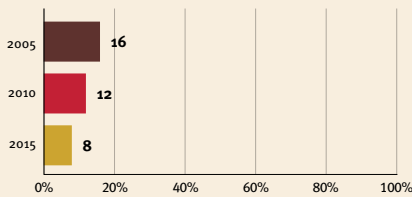
Demographics

Population	11,228,821
Annual births	203,625
Children under 5	1,007,603 (9%)
Under-five mortality	33/1,000

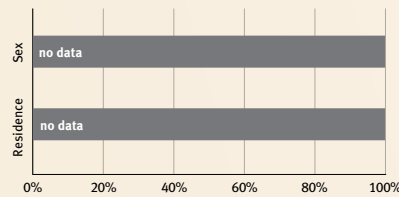
Threats to Early Childhood Development

Maternal mortality	107/100,000	Adolescent birth rate	42/1,000
Low birthweight	13%	Preterm births	11%
Child poverty	2%	Under-five stunting	6%
Violent discipline	63%	Inadequate supervision	8%

Young children at risk of poor development



Risk by sex and residence



Children with functional difficulty



Children developmentally on-track



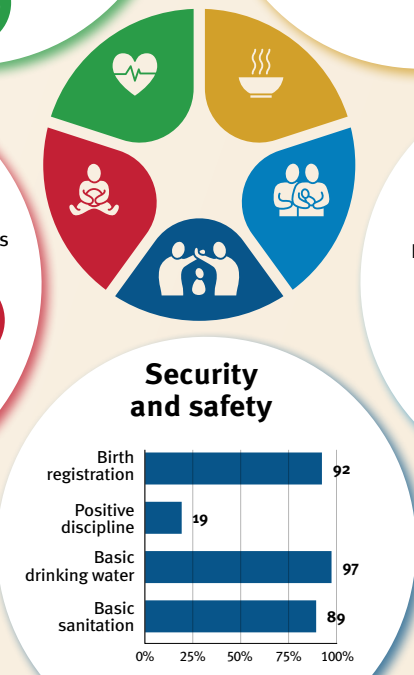
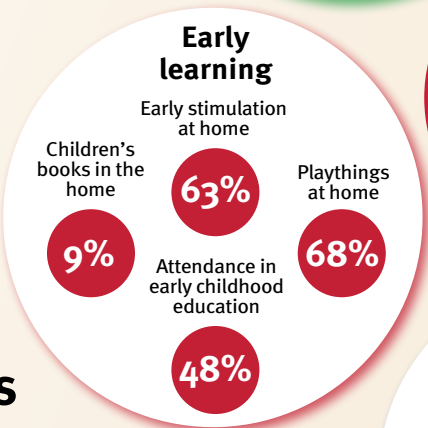
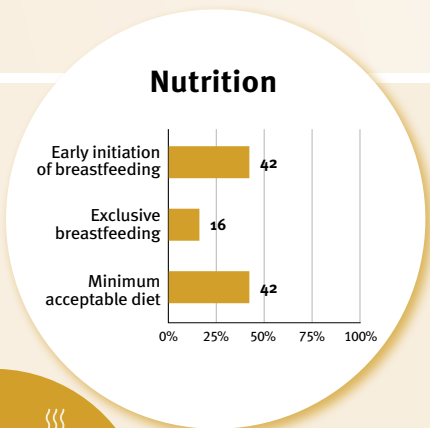
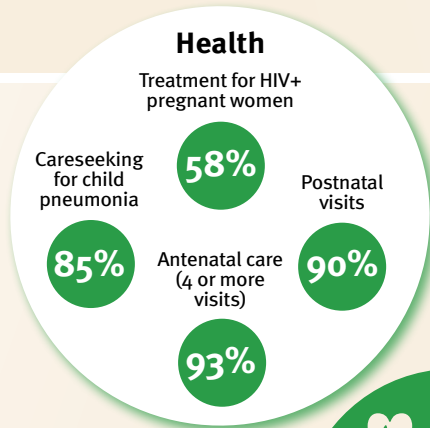
At risk in 2005, 2010 and 2015, using a composite indicator of under-five stunting or poverty

Support and services for early childhood development: Nurturing care

Parents and caregivers need a facilitating environment of laws, policies, services and community support to assist them in providing their young children with nurturing care.

Facilitating environments

Policies					
✔	<20%	20-39%	40-59%	60-79%	≥80%
Officially adopted national multisectoral ECD policy					
Child and family social protection					
None	<14	14 - <18	18 - <26	≥26	
Maternity leave (weeks)					
None	<14	14 - <18	18 - <26	≥26	
Paternity leave (weeks)					
Not	Slightly	Moderately	Substantially		
International Code of Marketing of Breastmilk Substitutes (alignment)					



International conventions

✔	Convention on the Rights of the Child
✔	Convention on the Rights of Persons with Disabilities
✔	CRC Optional Protocol on the Sale of Children, Child Prostitution and Child Pornography
✔	Hague Convention on Protection of Children and Cooperation in Respect of Intercountry Adoption