



# Equatorial Guinea

Countdown to 2030

Women's, Children's & Adolescents' Health

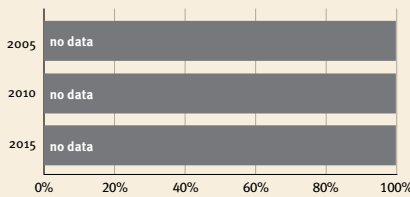
## Demographics

Population	1,674,908
Annual births	49,964
Children under 5	231,586 (14%)
Under-five mortality	77/1,000

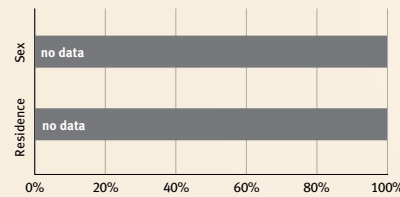
## Threats to Early Childhood Development

Maternal mortality	212/100,000	Adolescent birth rate	176/1,000
Low birthweight	no data	Preterm births	17%
Child poverty	no data	Under-five stunting	16%
Violent discipline	no data	Inadequate supervision	no data

## Young children at risk of poor development



## Risk by sex and residence



## Children with functional difficulty

no data

## Children developmentally on-track

no data

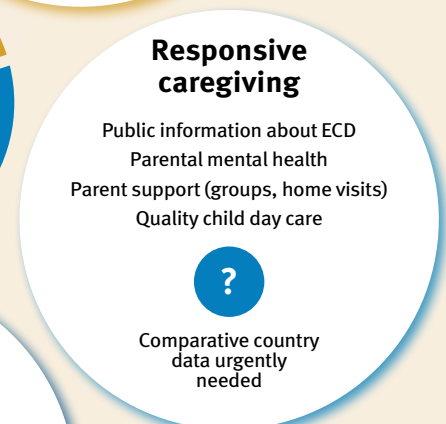
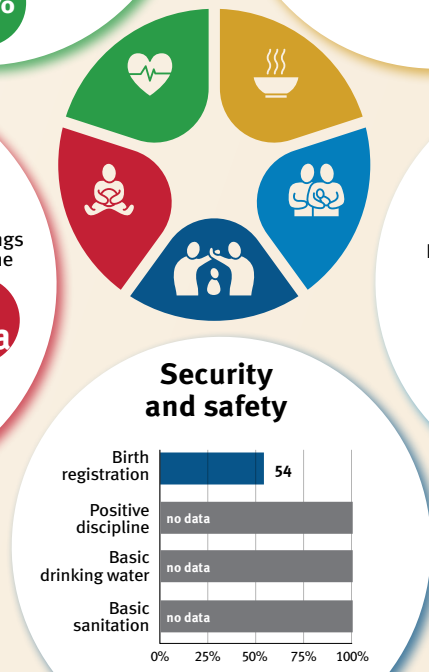
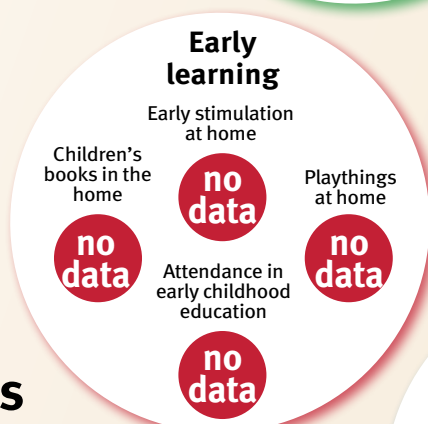
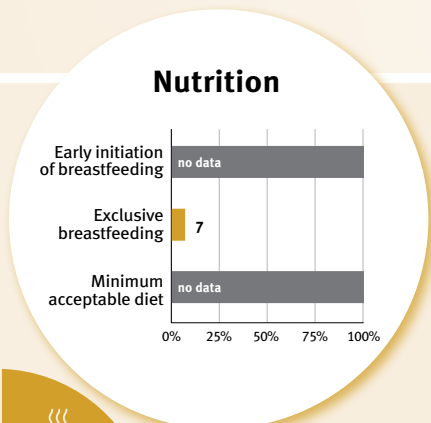
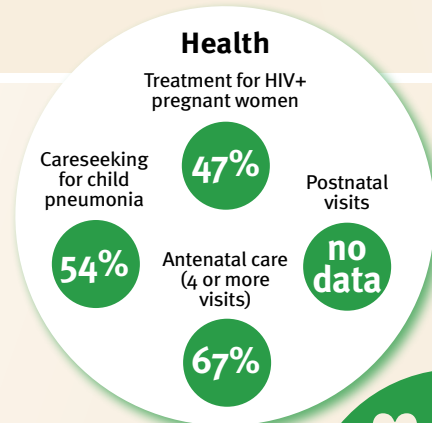
At risk in 2005, 2010 and 2015, using a composite indicator of under-five stunting or poverty

## Support and services for early childhood development: Nurturing care

Parents and caregivers need a facilitating environment of laws, policies, services and community support to assist them in providing their young children with nurturing care.

## Facilitating environments

Policies					
	<20%	20-39%	40-59%	60-79%	≥80%
Officially adopted national multisectoral ECD policy	X				
Child and family social protection	None	<14	14 - <18	18 - <26	≥26
Maternity leave (weeks)	None	<14	14 - <18	18 - <26	≥26
Paternity leave (weeks)	None	<14	14 - <18	18 - <26	≥26
International Code of Marketing of Breastmilk Substitutes (alignment)	Not	Slightly	Moderately	Substantially	



### International conventions

✓	Convention on the Rights of the Child
✓	Convention on the Rights of Persons with Disabilities
✓	CRC Optional Protocol on the Sale of Children, Child Prostitution and Child Pornography
X	Hague Convention on Protection of Children and Cooperation in Respect of Intercountry Adoption