



# Georgia

## Countdown to 2030

Women's, Children's & Adolescents' Health

### Demographics

Population	3,744,386
Annual births	49,106
Children under 5	253,745 (7%)
Under-five mortality	10/1,000

### Threats to Early Childhood Development

Maternal mortality	28/100,000	Adolescent birth rate	27/1,000
Low birthweight	7%	Preterm births	9%
Child poverty	no data	Under-five stunting	5%
Violent discipline	62%	Inadequate supervision	4%

### Young children at risk of poor development



### Risk by sex and residence



### Children with functional difficulty



### Children developmentally on-track

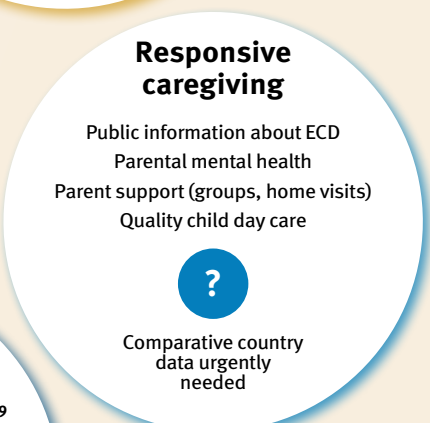
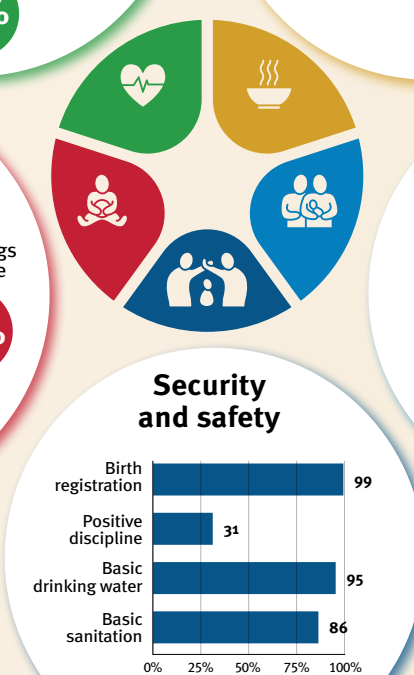
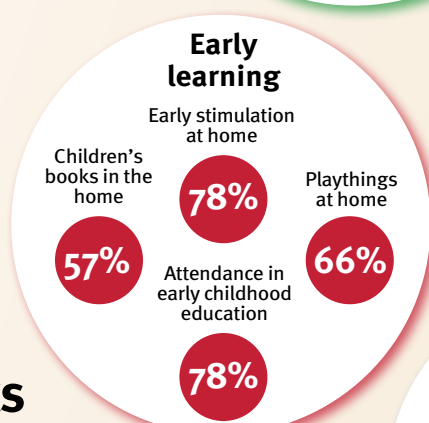
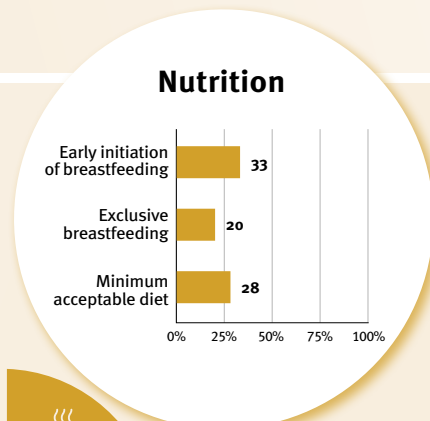
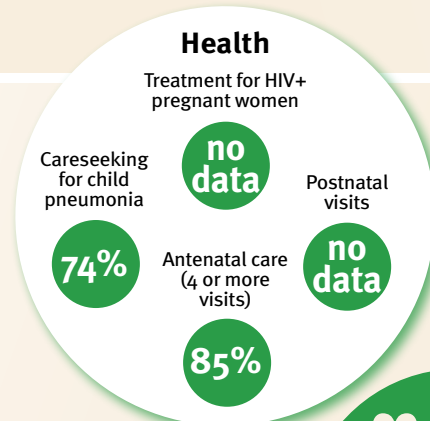


At risk in 2005, 2010 and 2015, using a composite indicator of under-five stunting or poverty

## Support and services for early childhood development: Nurturing care

Parents and caregivers need a facilitating environment of laws, policies, services and community support to assist them in providing their young children with nurturing care.

## Facilitating environments



Policies				
✔	20-39%	40-59%	60-79%	≥80%
Officially adopted national multisectoral ECD policy				
Child and family social protection				
None	<14	14 - <18	18 - <26	≥26
Maternity leave (weeks)				
None	<14	14 - <18	18 - <26	≥26
Paternity leave (weeks)				
Not	Slightly	Moderately	Substantially	
International Code of Marketing of Breastmilk Substitutes (alignment)				

International conventions	
✔	Convention on the Rights of the Child
✔	Convention on the Rights of Persons with Disabilities
✔	CRC Optional Protocol on the Sale of Children, Child Prostitution and Child Pornography
✔	Hague Convention on Protection of Children and Cooperation in Respect of Intercountry Adoption