



# Guinea

## Countdown to 2030

Women's, Children's & Adolescents' Health

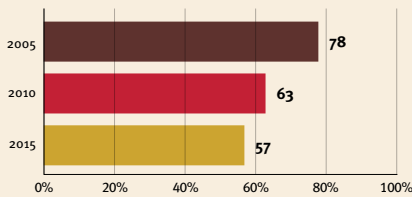
### Demographics

Population	13,859,341
Annual births	469,311
Children under 5	2,118,927 (15%)
Under-five mortality	99/1,000

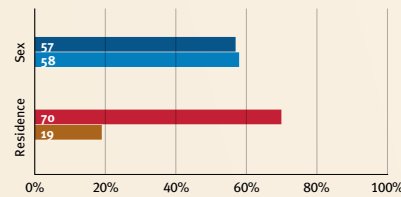
### Threats to Early Childhood Development

Maternal mortality	553/100,000	Adolescent birth rate	120/1,000
Low birthweight	no data	Preterm births	14%
Child poverty	40%	Under-five stunting	28%
Violent discipline	79%	Inadequate supervision	34%

### Young children at risk of poor development



### Risk by sex and residence



### Children with functional difficulty

no data

### Children developmentally on-track

49%

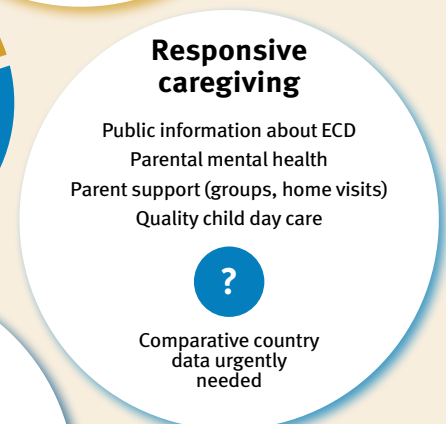
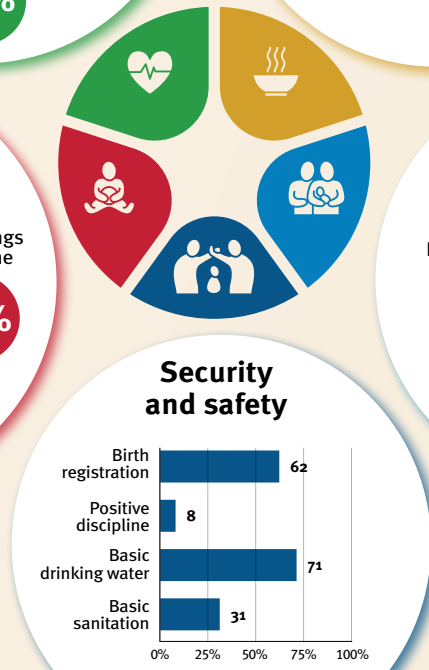
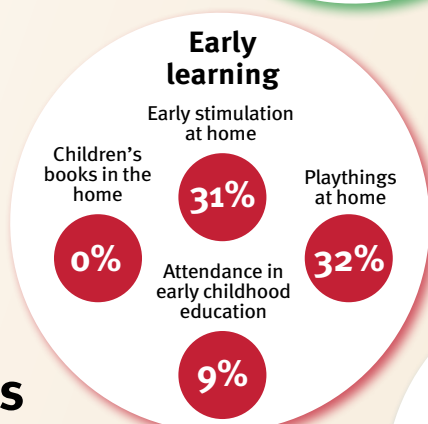
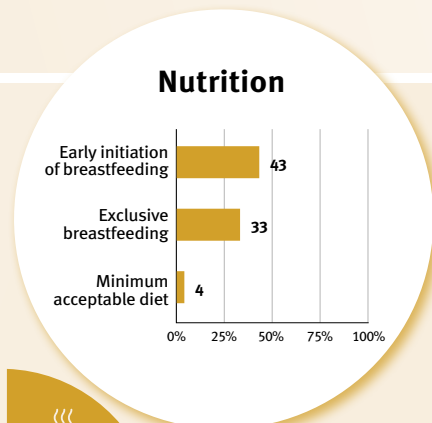
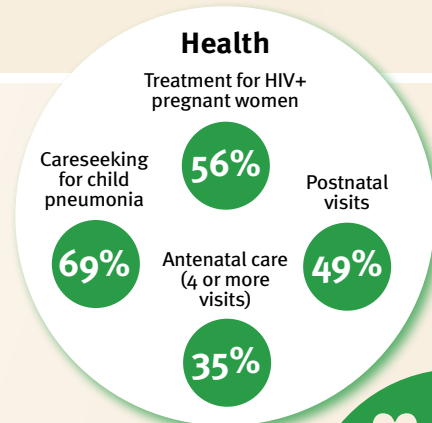
At risk in 2005, 2010 and 2015, using a composite indicator of under-five stunting or poverty

## Support and services for early childhood development: Nurturing care

Parents and caregivers need a facilitating environment of laws, policies, services and community support to assist them in providing their young children with nurturing care.

## Facilitating environments

Policies				
✓	Officially adopted national multisectoral ECD policy			
<20%	20-39%	40-59%	60-79%	≥80%
Child and family social protection				
None	<14	14 - <18	18 - <26	≥26
Maternity leave (weeks)				
None	<14	14 - <18	18 - <26	≥26
Paternity leave (weeks)				
Not	Slightly	Moderately	Substantially	
International Code of Marketing of Breastmilk Substitutes (alignment)				



### International conventions

- ✓ Convention on the Rights of the Child
- ✓ Convention on the Rights of Persons with Disabilities
- ✓ CRC Optional Protocol on the Sale of Children, Child Prostitution and Child Pornography
- ✓ Hague Convention on Protection of Children and Cooperation in Respect of Intercountry Adoption