



Jordan

Countdown to 2030

Women's, Children's & Adolescents' Health

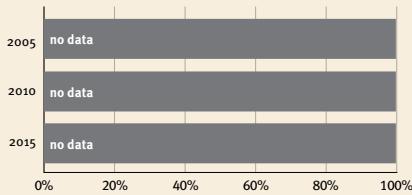
Demographics

Population	11,285,869
Annual births	245,484
Children under 5	1,193,204 (11%)
Under-five mortality	15/1,000

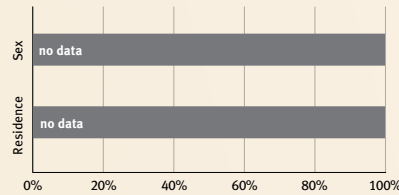
Threats to Early Childhood Development

Maternal mortality	41/100,000	Adolescent birth rate	27/1,000
Low birthweight	19%	Preterm births	14%
Child poverty	no data	Under-five stunting	7%
Violent discipline	80%	Inadequate supervision	16%

Young children at risk of poor development



Risk by sex and residence



Children with functional difficulty

no data

Children developmentally on-track

71%

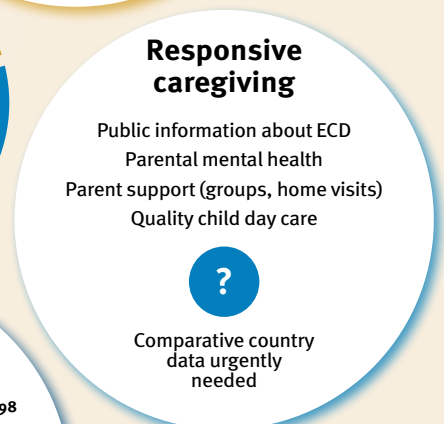
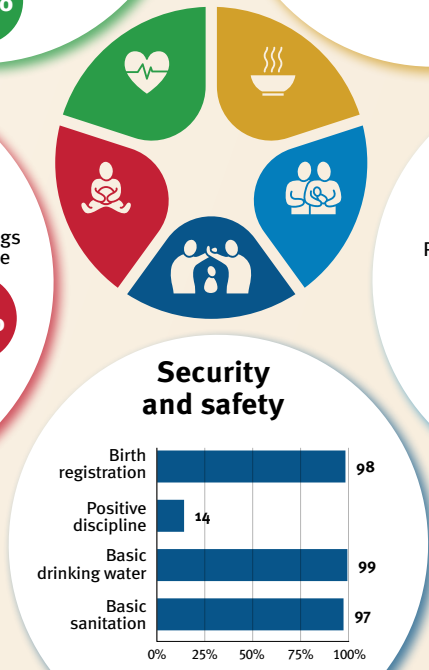
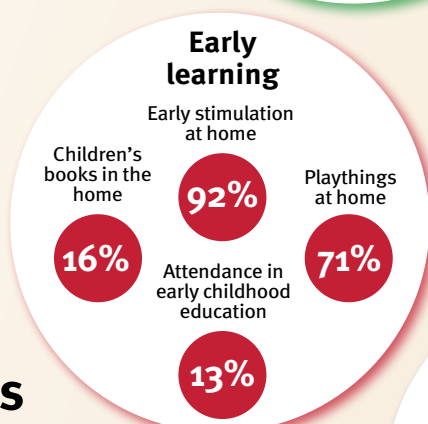
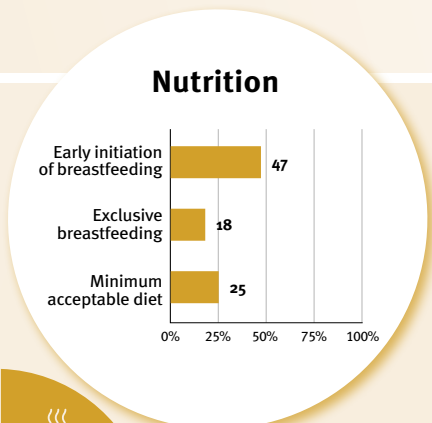
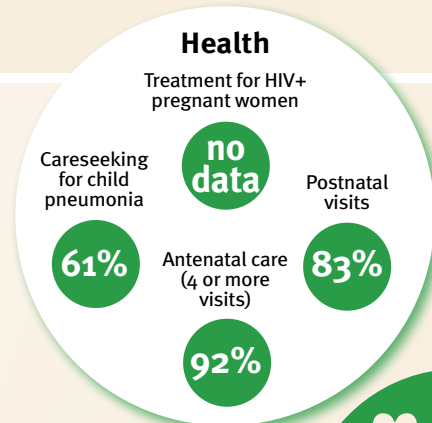
At risk in 2005, 2010 and 2015, using a composite indicator of under-five stunting or poverty

Support and services for early childhood development: Nurturing care

Parents and caregivers need a facilitating environment of laws, policies, services and community support to assist them in providing their young children with nurturing care.

Facilitating environments

Policies					
✓	<20%	20-39%	40-59%	60-79%	≥80%
Officially adopted national multisectoral ECD policy					
Child and family social protection					
None	<14	14 - <18	18 - <26	≥26	
Maternity leave (weeks)					
None	<14	14 - <18	18 - <26	≥26	
Paternity leave (weeks)					
Not	Slightly	Moderately	Substantially		
International Code of Marketing of Breastmilk Substitutes (alignment)					



International conventions	
✓	Convention on the Rights of the Child
✓	Convention on the Rights of Persons with Disabilities
✓	CRC Optional Protocol on the Sale of Children, Child Prostitution and Child Pornography
✗	Hague Convention on Protection of Children and Cooperation in Respect of Intercountry Adoption