



# Mozambique

## Countdown to 2030

Women's, Children's & Adolescents' Health

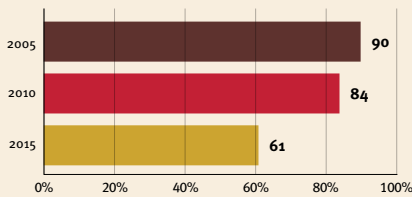
### Demographics

Population	32,969,519
Annual births	1,191,147
Children under 5	5,367,719 (16%)
Under-five mortality	70/1,000

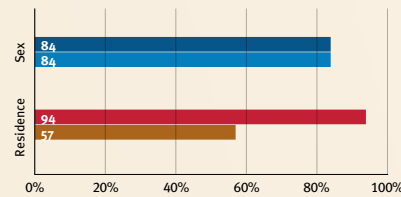
### Threats to Early Childhood Development

Maternal mortality	127/100,000	Adolescent birth rate	180/1,000
Low birthweight	18%	Preterm births	16%
Child poverty	82%	Under-five stunting	36%
Violent discipline	no data	Inadequate supervision	33%

### Young children at risk of poor development



### Risk by sex and residence



### Children with functional difficulty

no data

### Children developmentally on-track

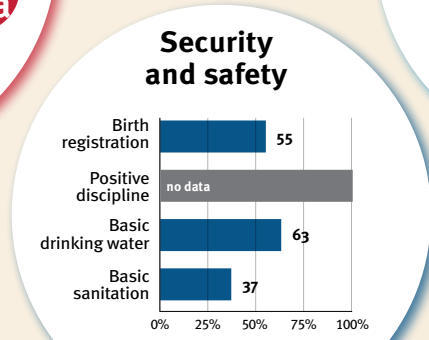
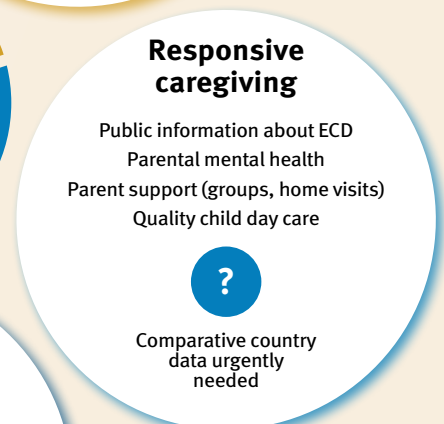
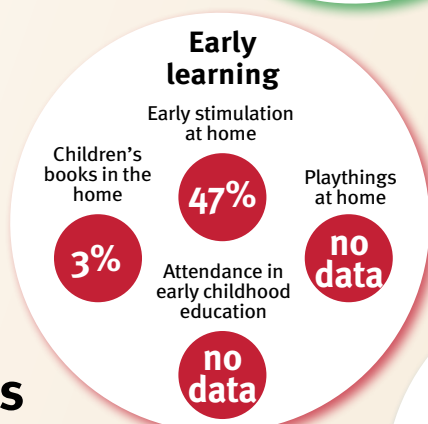
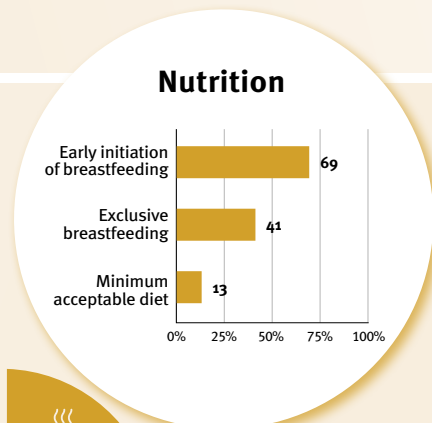
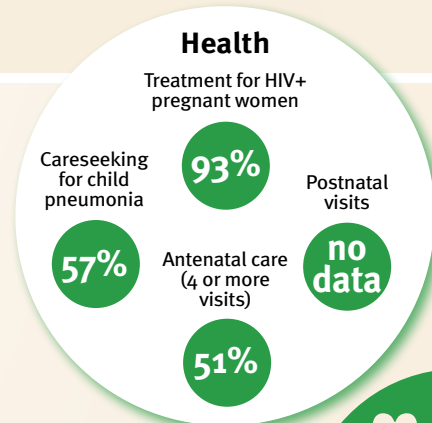
no data

At risk in 2005, 2010 and 2015, using a composite indicator of under-five stunting or poverty

## Support and services for early childhood development: Nurturing care

Parents and caregivers need a facilitating environment of laws, policies, services and community support to assist them in providing their young children with nurturing care.

## Facilitating environments



Policies					
✓	<20%	20-39%	40-59%	60-79%	≥80%
Officially adopted national multisectoral ECD policy					
Child and family social protection					
None	<14	14 - <18	18 - <26	≥26	
Maternity leave (weeks)					
None	<14	14 - <18	18 - <26	≥26	
Paternity leave (weeks)					
Not	Slightly	Moderately	Substantially		
International Code of Marketing of Breastmilk Substitutes (alignment)					

International conventions	
✓	Convention on the Rights of the Child
✓	Convention on the Rights of Persons with Disabilities
✓	CRC Optional Protocol on the Sale of Children, Child Prostitution and Child Pornography
✗	Hague Convention on Protection of Children and Cooperation in Respect of Intercountry Adoption