



# Pakistan

## Countdown to 2030

Women's, Children's & Adolescents' Health

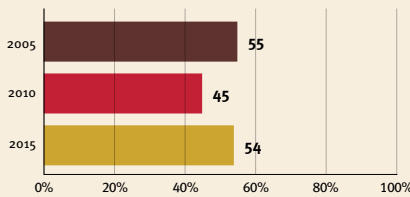
### Demographics

|                      |                  |
|----------------------|------------------|
| Population           | 235,824,863      |
| Annual births        | 6,424,944        |
| Children under 5     | 29,798,188 (13%) |
| Under-five mortality | 63/1,000         |

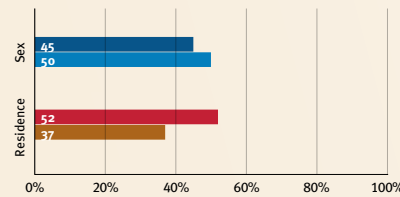
### Threats to Early Childhood Development

|                    |             |                        |          |
|--------------------|-------------|------------------------|----------|
| Maternal mortality | 154/100,000 | Adolescent birth rate  | 54/1,000 |
| Low birthweight    | no data     | Preterm births         | 16%      |
| Child poverty      | 9%          | Under-five stunting    | 34%      |
| Violent discipline | no data     | Inadequate supervision | no data  |

### Young children at risk of poor development



### Risk by sex and residence



### Children with functional difficulty

no data

### Children developmentally on-track

no data

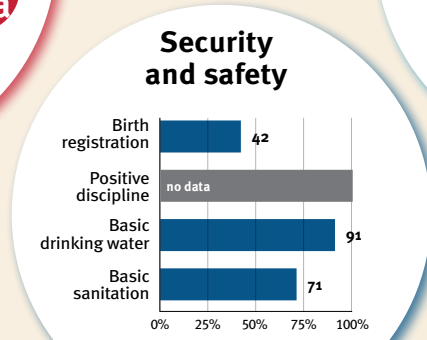
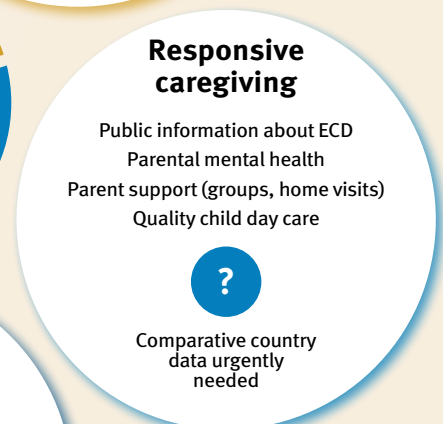
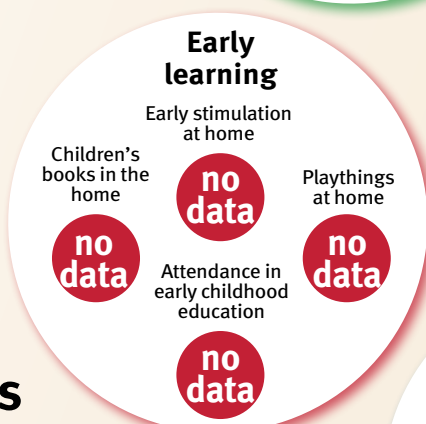
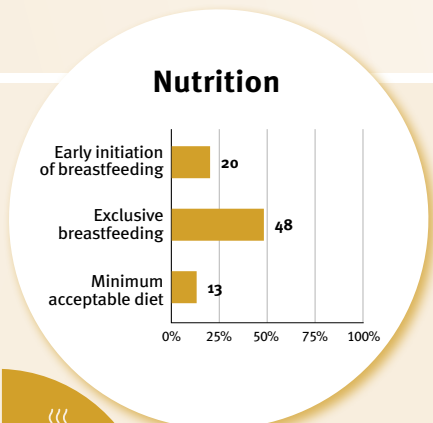
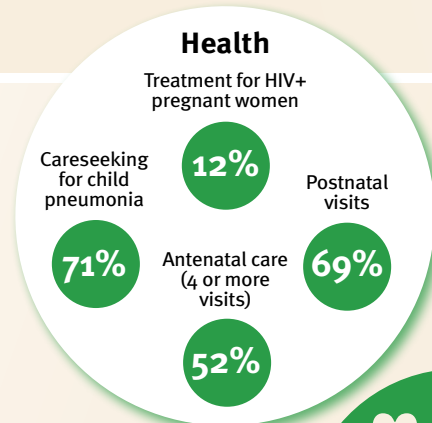
At risk in 2005, 2010 and 2015, using a composite indicator of under-five stunting or poverty

## Support and services for early childhood development: Nurturing care

Parents and caregivers need a facilitating environment of laws, policies, services and community support to assist them in providing their young children with nurturing care.

## Facilitating environments

| Policies  |  |            |               |      |
|---|--|------------|---------------|------|
| ✓   | Officially adopted national multisectoral ECD policy |            |               |      |
| <20%  | 20-39%   | 40-59%     | 60-79%        | ≥80% |
| Child and family social protection                                    |  |            |               |      |
| None  | <14  | 14 - <18   | 18 - <26      | ≥26  |
| Maternity leave (weeks)   |  |            |               |      |
| None  | <14  | 14 - <18   | 18 - <26      | ≥26  |
| Paternity leave (weeks)   |  |            |               |      |
| Not   | Slightly   | Moderately | Substantially |      |
| International Code of Marketing of Breastmilk Substitutes (alignment) |  |            |               |      |



| International conventions |  |
|---------------------------|--|
| ✓                         | Convention on the Rights of the Child  |
| ✓                         | Convention on the Rights of Persons with Disabilities  |
| ✓                         | CRC Optional Protocol on the Sale of Children, Child Prostitution and Child Pornography        |
| ✗                         | Hague Convention on Protection of Children and Cooperation in Respect of Intercountry Adoption |