



Peru

Countdown to 2030

Women's, Children's & Adolescents' Health

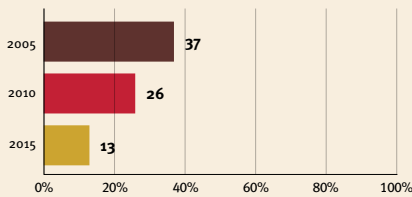
Demographics

Population	34,049,589
Annual births	592,156
Children under 5	2,927,120 (9%)
Under-five mortality	14/1,000

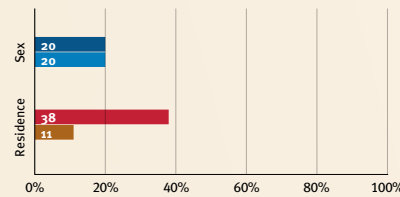
Threats to Early Childhood Development

Maternal mortality	69/100,000	Adolescent birth rate	34/1,000
Low birthweight	7%	Preterm births	7%
Child poverty	4%	Under-five stunting	10%
Violent discipline	no data	Inadequate supervision	no data

Young children at risk of poor development



Risk by sex and residence



Children with functional difficulty

no data

Children developmentally on-track

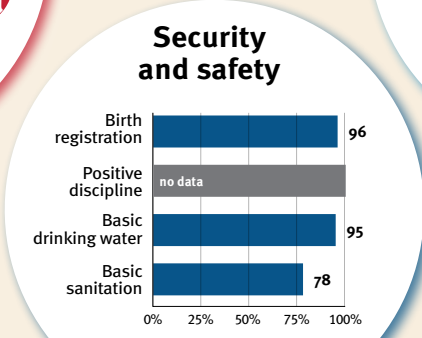
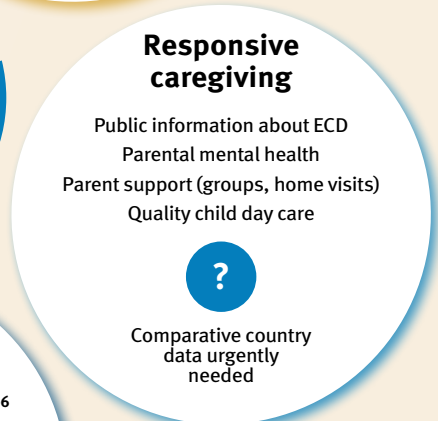
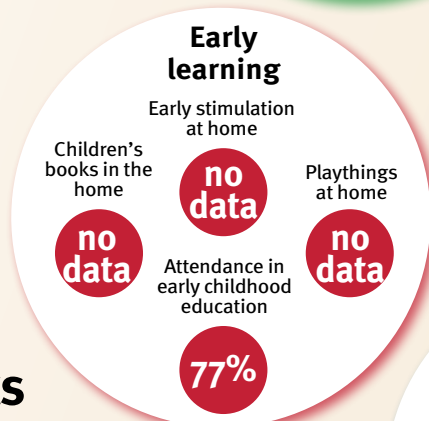
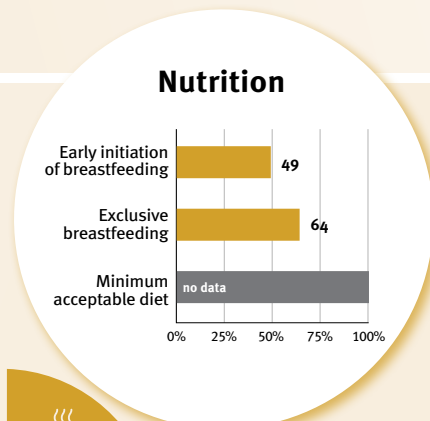
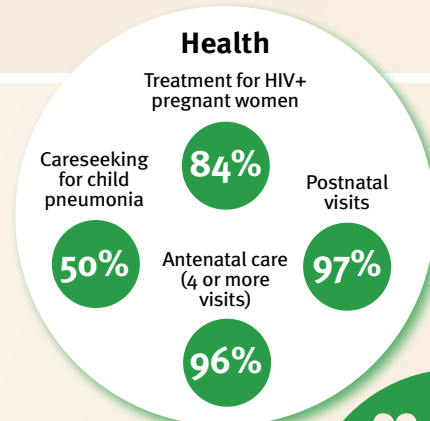
no data

At risk in 2005, 2010 and 2015, using a composite indicator of under-five stunting or poverty

Support and services for early childhood development: Nurturing care

Parents and caregivers need a facilitating environment of laws, policies, services and community support to assist them in providing their young children with nurturing care.

Facilitating environments



Policies					
✓	Officially adopted national multisectoral ECD policy				
	<20%	20-39%	40-59%	60-79%	≥80%
Child and family social protection					
None	<14	14 - <18	18 - <26	≥26	
Maternity leave (weeks)					
None	<14	14 - <18	18 - <26	≥26	
Paternity leave (weeks)					
Not	Slightly	Moderately	Substantially		
International Code of Marketing of Breastmilk Substitutes (alignment)					

International conventions	
✓	Convention on the Rights of the Child
✓	Convention on the Rights of Persons with Disabilities
✓	CRC Optional Protocol on the Sale of Children, Child Prostitution and Child Pornography
✓	Hague Convention on Protection of Children and Cooperation in Respect of Intercountry Adoption