



Sierra Leone

Countdown to 2030

Women's, Children's & Adolescents' Health

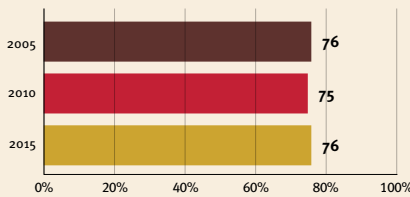
Demographics

| | |
|----------------------|-----------------|
| Population | 8,605,718 |
| Annual births | 265,023 |
| Children under 5 | 1,199,103 (14%) |
| Under-five mortality | 105/1,000 |

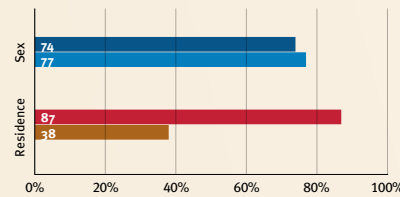
Threats to Early Childhood Development

| | | | |
|--------------------|-------------|------------------------|-----------|
| Maternal mortality | 443/100,000 | Adolescent birth rate | 102/1,000 |
| Low birthweight | 10% | Preterm births | 10% |
| Child poverty | 60% | Under-five stunting | 26% |
| Violent discipline | 76% | Inadequate supervision | 30% |

Young children at risk of poor development



Risk by sex and residence



Children with functional difficulty



Children developmentally on-track

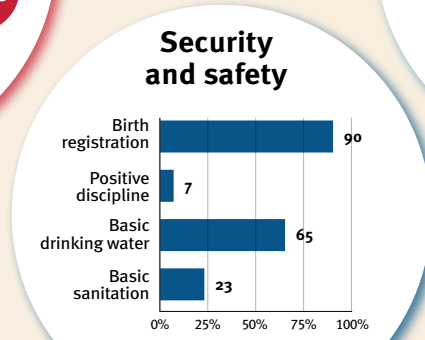
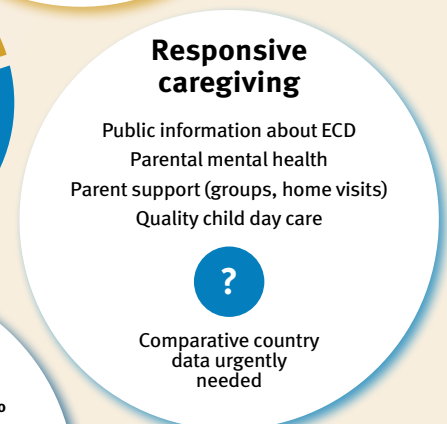
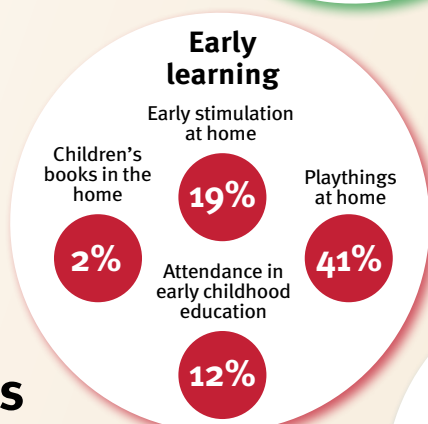
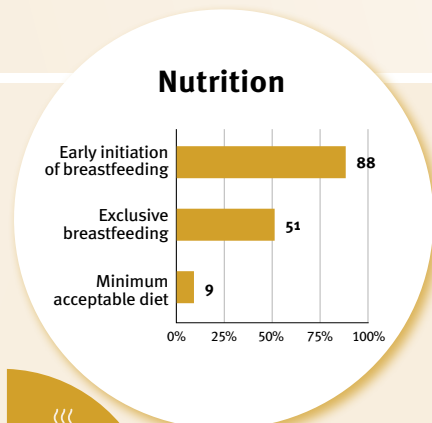
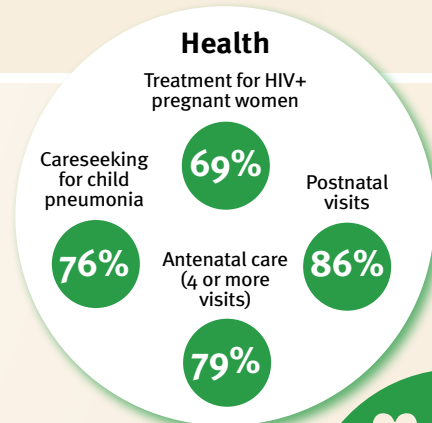


At risk in 2005, 2010 and 2015, using a composite indicator of under-five stunting or poverty

Support and services for early childhood development: Nurturing care

Parents and caregivers need a facilitating environment of laws, policies, services and community support to assist them in providing their young children with nurturing care.

Facilitating environments



| Policies | | | | | |
|-----------------------------------------------------------------------|----------|------------|---------------|--------|------|
| ✓ | <20% | 20-39% | 40-59% | 60-79% | ≥80% |
| Officially adopted national multisectoral ECD policy | | | | | |
| Child and family social protection | | | | | |
| None | <14 | 14 - <18 | 18 - <26 | ≥26 | |
| Maternity leave (weeks) | | | | | |
| None | <14 | 14 - <18 | 18 - <26 | ≥26 | |
| Paternity leave (weeks) | | | | | |
| Not | Slightly | Moderately | Substantially | | |
| International Code of Marketing of Breastmilk Substitutes (alignment) | | | | | |

| International conventions | |
|---------------------------|------------------------------------------------------------------------------------------------|
| ✓ | Convention on the Rights of the Child |
| ✓ | Convention on the Rights of Persons with Disabilities |
| ✓ | CRC Optional Protocol on the Sale of Children, Child Prostitution and Child Pornography |
| ✗ | Hague Convention on Protection of Children and Cooperation in Respect of Intercountry Adoption |