



# Suriname

## Countdown to 2030

Women's, Children's & Adolescents' Health

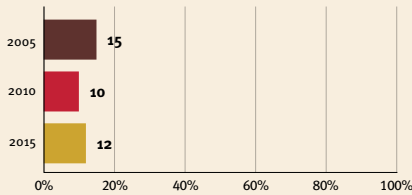
### Demographics

Population	618,041
Annual births	11,123
Children under 5	54,415 (9%)
Under-five mortality	17/1,000

### Threats to Early Childhood Development

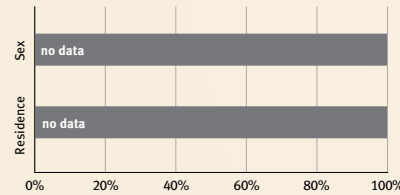
Maternal mortality	96/100,000	Adolescent birth rate	49/1,000
Low birthweight	16%	Preterm births	9%
Child poverty	no data	Under-five stunting	8%
Violent discipline	87%	Inadequate supervision	6%

### Young children at risk of poor development



At risk in 2005, 2010 and 2015, using a composite indicator of under-five stunting or poverty

### Risk by sex and residence



### Children with functional difficulty



### Children developmentally on-track

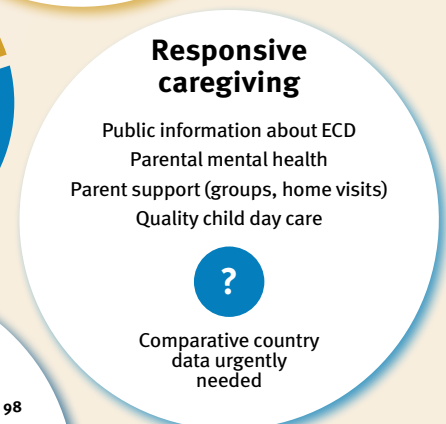
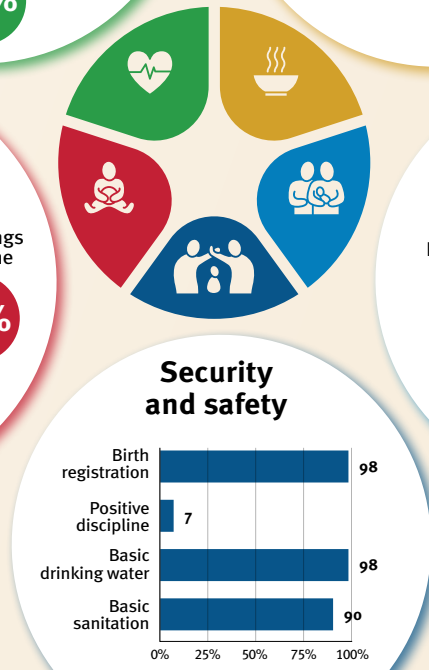
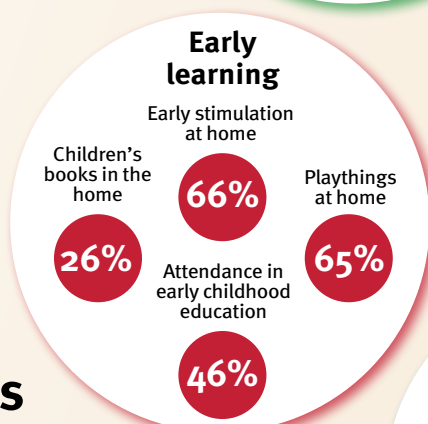
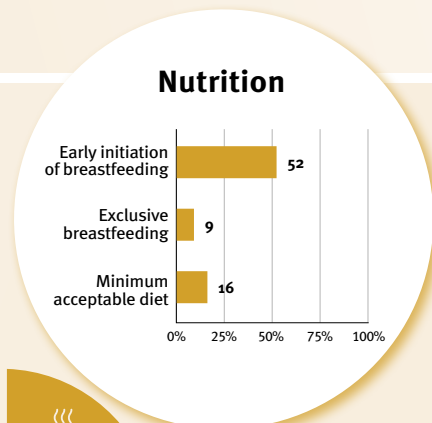
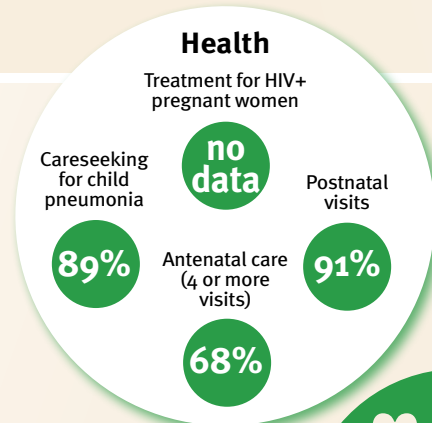


## Support and services for early childhood development: Nurturing care

Parents and caregivers need a facilitating environment of laws, policies, services and community support to assist them in providing their young children with nurturing care.

## Facilitating environments

Policies				
<20%	20-39%	40-59%	60-79%	≥80%
X Officially adopted national multisectoral ECD policy				
Child and family social protection				
None	<14	14 - <18	18 - <26	≥26
Maternity leave (weeks)				
None	<14	14 - <18	18 - <26	≥26
Paternity leave (weeks)				
Not	Slightly	Moderately	Substantially	
International Code of Marketing of Breastmilk Substitutes (alignment)				



### International conventions

✓	Convention on the Rights of the Child
✓	Convention on the Rights of Persons with Disabilities
✓	CRC Optional Protocol on the Sale of Children, Child Prostitution and Child Pornography
X	Hague Convention on Protection of Children and Cooperation in Respect of Intercountry Adoption